

**3M Company**  
**Design No. 3M/PHV 120-03**  
**Through Penetration**  
**3M™ Fire Barrier Ultra PPD**  
**3M™ Fire Barrier PPD-6**  
**3M™ Fire Barrier Ultra RC Pack**  
**3M™ Fire Barrier Ultra GS Wrap Strip**  
**3M™ Fire Barrier RC-1 Collar**  
**3M™ Ultrafast™ Anchors**  
**3M™ Fire Barrier IC 15WB+**  
**3M™ Fire Barrier CP 25WB+**  
**3M™ Fire Barrier 3000WT**  
**3M™ FireDam 150+**

**CAN/ULC-S115, ASTM E814**  
**Rating: See Table 1**  
**Pressure Differential: Positive, 50 Pa (0.20 in. w.g.)**

**TABLE 1. RATINGS**

		<b>CAN/ULC-S115</b>	<b>ASTM E814</b>
<b>Penetrating Item</b>	<b>Pipe Size</b>	<b>F, FH, FT, FTH</b>	<b>F, T</b>
<b>PVC</b>	<b>1-1/2 in. - 6 in.</b>	<b>2 Hr</b>	<b>2 Hr</b>
<b>System XFR</b>	<b>1-1/2 in. - 6 in.</b>	<b>2 Hr</b>	<b>2 Hr</b>
<b>CPVC</b>	<b>1-1/2 in. - 4 in.</b>	<b>2 Hr</b>	<b>2 Hr</b>
<b>ccABS</b>	<b>1-1/2 in. - 4 in.</b>	<b>2 Hr</b>	<b>2 Hr</b>
<b>ABS</b>	<b>1-1/2 in. - 4 in.</b>	<b>2 Hr</b>	<b>2 Hr</b>
<b>FRPP</b>	<b>1-1/2 in. - 4 in.</b>	<b>2 Hr</b>	<b>2 Hr</b>
<b>PVC – Thin Wall</b>	<b>2 in.</b>	<b>2 Hr</b>	<b>2 Hr</b>

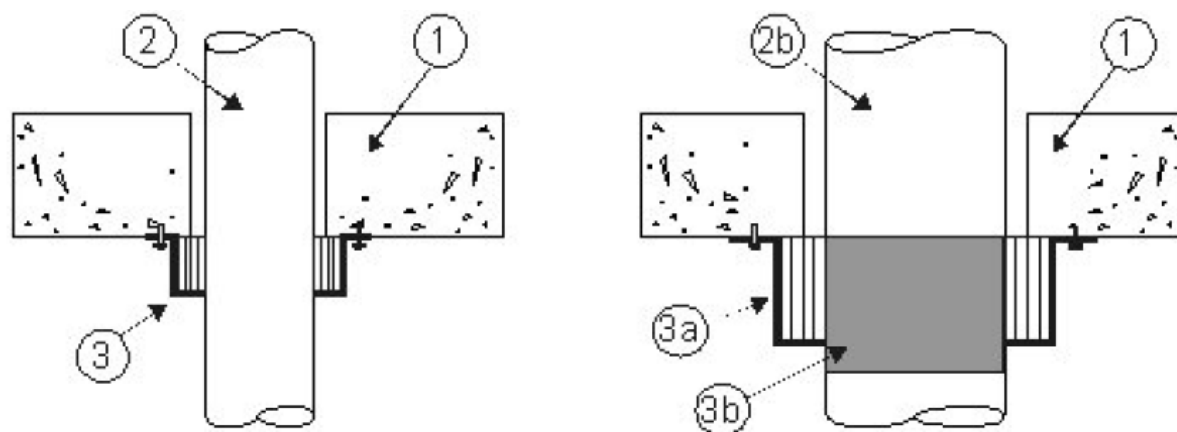


Figure 1. Penetration Detail

1. **FLOOR OR WALL ASSEMBLY:** Code conforming 2-hour fire-rated floor or wall assembly, nominal 4-1/2-in. thickness, low density cast concrete, or hollow core concrete. Wall may also be constructed of nominal 8-in. thick concrete blocks (filled or unfilled).

**HOLLOW CORE CONCRETE (Not Shown):** Seal the annular space at pipe penetration on the floor side with a 1/4-in. thickness of one of the Intertek-Certified sealants listed below applied over 1-in. thickness of Intertek-Certified mineral wool.

**Certified Products: Sealant**

- 3M™ Fire Barrier CP 25WB+
- 3M™ Fire Barrier IC 15WB+
- 3M™ Fire Barrier 3000WT
- 3M™ FireDam 150+

2. **PENETRATING ITEMS:** (See also Table 1) Nominal 4-in. diameter, Schedule 40, ccABS, ABS, PVC, System XFR, CPVC, and FRPP pipes for use in DWV (Drain, Waste and Vent) or Closed (Process and Supply) piping systems, and PVC - Thin Wall Vacuum Tubing (nominal 2-in. diameter). Use 1/4-in. maximum annular space between penetrating item and floor or wall assembly. Ratings achieved will equal that of floor or wall assembly.

- b) Nominal 6-in. diameter, Schedule 40, PVC, and System XFR.

3. **FIRESTOP SYSTEM COMPONENTS:**

**Certified Products:** 3M™ Fire Barrier Ultra PPD, 3M™ Fire Barrier PPD-6, 3M™ Fire Barrier Ultra PPD or 3M™ Fire Barrier Ultra RC Pack: Size devices appropriately for pipe diameter and secure with Intertek-Certified 3M™ Ultrafast™ Anchors or steel masonry anchors 1/4-in. diameter x 1-1/4-in. long over fender washers. To reduce opening size backfill annular space with a non-shrink grout. Use Intertek-certified 3M™ Fire Barrier Ultra PPD 1.5 for PVC – Thin Wall Vacuum Tubing (nominal 2-in. diameter).

**3M™ PPD Size Chart**

Device	Nominal Pipe Size	Max. Hole Size
PPD 1.5	1-1/2 in.	2-1/2 in.
PPD 2.0	2 in.	3 in.
PPD 3.0	3 in.	4 in.
PPD 4.0	4 in.	5 in.
PPD-6	6 in.	7 in.



**3M™ Fire Barrier Ultra RC Pack Size Chart**

Device	Nominal Pipe Size	Max. Hole Size
RC Pack 2	2 in.	3 in.
RC Pack 3	3 in.	4 in.
RC Pack 4	4 in.	5 in.

**Certified Products: 3M™ Interam™ Ultra GS Wrap Strip in 3M™ Fire Barrier RC-1 Collar:**

Use nominal 1/8-in. thick, 2-in. wide 3M™ Fire Barrier Ultra GS Wrap Strip and nominal 2-in. wide 3M™ Fire Barrier RC-1 Collar as an alternative to 3M™ Fire Barrier Ultra PPD. Install the wrap strip tightly around penetrating item with continuous layers and butted tightly against the ceiling. Use aluminum foil tape, steel wire tie, or equivalent to hold wrap strip in place temporarily. Use 3M™ Fire Barrier RC-1 collar to retain the wrap strip. Bend the anchor tabs outward 90 degrees and install the collar tightly around the wrap strip with 1-in. overlap at the ends. Secure the collar with 1/2-in. wide stainless steel hose clamp. Fasten the collar tabs to the floor or wall assembly as specified for the 3M™ Fire Barrier Ultra PPD.

**3M™ Interam™ Ultra GS Wrap Strip in 3M™ Fire Barrier RC-1 Collar Size Chart**

Pipe ID	Anchors Required	Wrap Strip Layers
1-1/2 in.	2	1
2 in.	2	1
3 in.	3	2
4 in.	4	3

- a) Intertek-Certified 3M™ Fire Barrier PPD-6: Installed onto nominal 6-in. pipe (Item 2b) over aluminum foil tape (Item 3b), secured with steel masonry anchors 1/4-in. diameter x 1-1/4-in. long over fender washers.
- b) Aluminum Foil Tape: Wrap pipe with one layer of tape covering 4 in. of pipe length.

**Certified Products: Sealant**

- 3M™ Fire Barrier CP 25WB+
- 3M™ Fire Barrier IC 15WB+
- 3M™ Fire Barrier 3000WT
- 3M™ FireDam 150+

**Use sealant** to fill the annular space at the pipe penetration as a smoke seal.

**Note: CPVC Pipe – use only 3M™ Fire Barrier IC 15WB+ Sealant**

Consult the listing report on the Directory of Building Products (<https://bpdirectory.intertek.com>) for the edition of the standard(s) evaluated.

*Compliance of the assembly described in this Design Listing with the referenced standard relies on verification that the assembly constructed in the field is consistent with that described herein. Intertek certified products may be verified by the approved Intertek label; other products must be verified by the Authority Having Jurisdiction as meeting the specifications stated herein.*