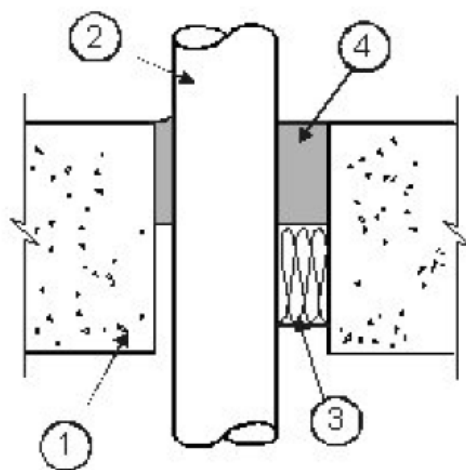


**3M Company**  
**Design No. 3M/PHV 120-12**  
**Through Penetration**  
**3M™ Fire Barrier IC 15WB+**  
**3M™ Fire Barrier CP 25WB+**  
**CAN/ULC-S115**  
**Rating: See Table 1**  
**Pressure Differential: Positive, 50 Pa (0.20 in. w.g.)**

**TABLE 1. RATINGS**

Penetrating Item	Max. Pipe Size	Max. Opening Diameter	Annular Space	CAN/ULC-S115	
				F, FH	FT, FTH
PVC	2 in.	3 in.	1/4 in. to 3/4 in.	2 Hr	0 Hr
PEX	1 in.	2 in.	1/4 in. to 3/4 in.	2 Hr	0 Hr



**Figure 1. Penetration Detail**

**1. FLOOR OR WALL ASSEMBLY:** Code conforming 2-hour fire-rated floor or wall assembly, nominal 4-1/2-in. thickness, normal or low density cast concrete. Wall may also be constructed of nominal 8-in. thick concrete blocks (filled or unfilled). Rating achieved will equal that of floor or wall assembly.

**a) Steel Sleeve** (Optional, not shown): For use with PVC Pipes only, minimum 0.028 in. wall thickness (or heavier) galvanized steel sleeve cast or grouted into floor or wall assembly. Sleeve may extend a maximum of 1/2 in. beyond either surface of floor or wall assembly (Item 1).



**2. PENETRATING ITEMS:** (See Table 1) Schedule 40, PVC pipe for use in DWV (Drain, Waste and Vent) or Closed (Process and Supply) piping systems. PEX pipes for use in Closed (Process & Supply) piping systems.

**3. PACKING MATERIAL:** Intertek-Certified mineral wool, 2-in. thickness, 4 pcf, tightly packed around the penetrant recessed from the floor or wall surface.

**4. FILL, VOID, OR CAVITY MATERIAL:**

**Certified Products: Sealant**

- **3M™ Fire Barrier IC 15WB+**
- **3M™ Fire Barrier CP 25WB+**

**PVC Pipes:** Apply to 2-in. thickness, within the annular space around the penetrant, over the packing material, flush with the floor or wall surface.

**PEX Pipes:** Apply to 1-in. thickness, within the annular space around the penetrant, over the packing material, flush with the floor or wall surface.

For wall applications apply firestop system to both surfaces.

*Consult the listing report on the Directory of Building Products (<https://bpdirectory.intertek.com>) for the edition of the standard(s) evaluated.*

*Compliance of the assembly described in this Design Listing with the referenced standard relies on verification that the assembly constructed in the field is consistent with that described herein. Intertek certified products may be verified by the approved Intertek label; other products must be verified by the Authority Having Jurisdiction as meeting the specifications stated herein.*