

3M Company
Design No. 3M/PV 120-02
Through Penetration
3M™ FireStrap™
3M™ FirePlug™
3M™ FireDam FD-150+
3M™ Fire Barrier IC 15WB+
3M™ Fire Barrier CP 25WB+
3M™ Fire Barrier 3000WT
CAN/ULC-S115
Rating: See Table 1

Pressure Differential: Positive, 50 Pa (0.20 in. w.g.)

TABLE 1. RATINGS

		CAN/ULC-S115
Penetrating Item	Max. Pipe Size	F, FT, FH, FTH
PVC	3 in.	1 & 2 Hr
ccABS	3 in.	1 & 2 Hr
ABS	3 in.	1 & 2 Hr
PVC – Thin Wall**	2 in.	1 & 2 Hr
XFR	2 in.	1 & 2 Hr

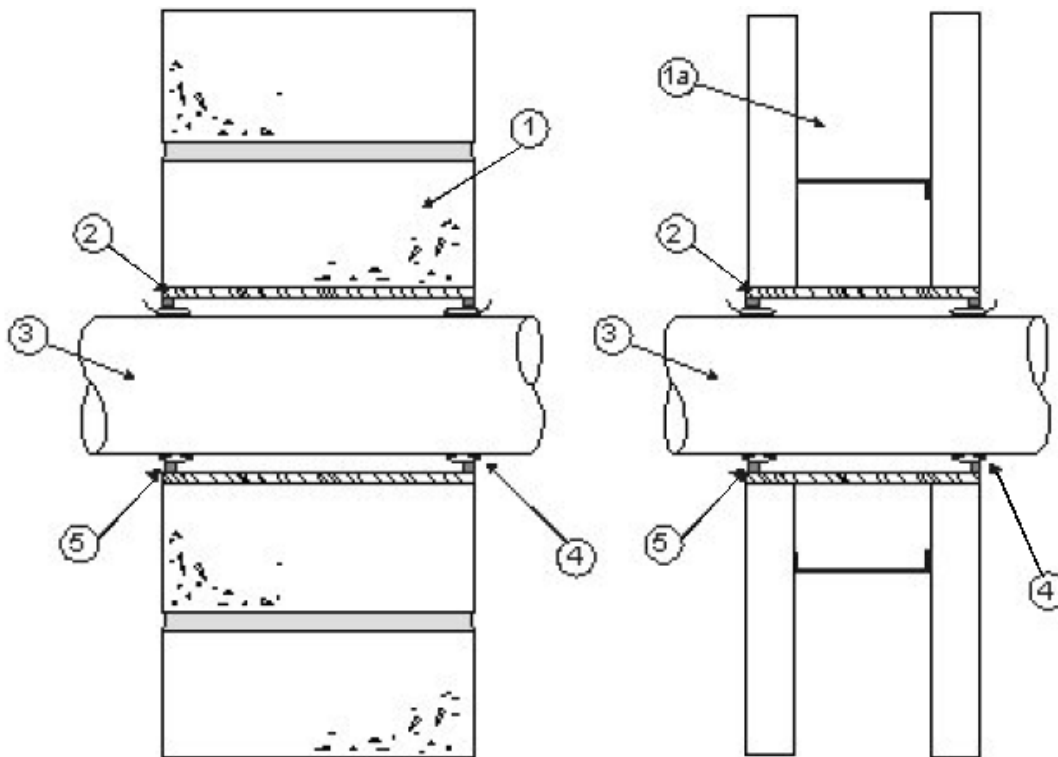


Figure 1. Penetration Detail

1. **WALL ASSEMBLY:** Code conforming 2 hour fire rated wall assembly, nominal 4-1/2-in. thickness, normal or low density cast concrete. Wall may also be constructed of nominal 8-in. thick concrete blocks (filled or unfilled). Ratings achieved will equal that of wall assembly.

a) **Wall Assembly:** Code confirming 1 or 2 hour fire rated wall, metal or wood framed gypsum wallboard wall assembly. Ratings achieved will equal that of wall assembly.

2. **STEEL SLEEVE:** Minimum 28 gauge galvanized steel, positioned within the opening with a 1-in. overlap, maximum 4-1/2-in. diameter. Sleeve may be flush with wall surface, or extended a 1/2 in. beyond either surface of

wall. Sleeve is cast or grouted into masonry walls.

3. **PENETRATING ITEMS:** (See Table 1) Sch 40, ccABS, ABS, PVC and XFR pipes for DWV (Drain, Waste and Vent) or Closed (Process and Supply) piping systems & PVC – Thin Wall Vacuum Tubing (nominal 2-in. diameter). Ratings achieved will equal that of the wall assembly (Item 1).

4. FIRESTOP SYSTEM COMPONENTS:

Certified Products:

- 3M™ FireStrap™
- 3M™ FirePlug™



Install 3M™ Firestrap™ or 3M™ FirePlug™ with 1/4 in. of the firestop exposed outside the surface of the wall assembly within the steel sleeve, according to the manufacturer's instructions.

**Use 3M™ FireStrap™ 1-1/2-in. for PVC – Thin Wall Vacuum Tubing (nominal 2-in. diameter).

Pipe Size	Opening Diameter
1-1/2 in.	3 in.
2 in.	3-1/4 in.
3 in.	4-1/2 in.

5. FILL, VOID, OR CAVITY MATERIAL:

Certified Products: Sealant

- 3M™ FireDam FD-150+
- 3M™ Fire Barrier IC 15WB+
- 3M™ Fire Barrier CP 25WB+
- 3M™ Fire Barrier 3000WT

Apply to seal the space between the device and the steel sleeve and between the steel sleeve and the substrate. Firestop system is applied to both sides of the wall.

Consult the listing report on the Directory of Building Products (<https://bpdirectory.intertek.com>) for the edition of the standard(s) evaluated.

Compliance of the assembly described in this Design Listing with the referenced standard relies on verification that the assembly constructed in the field is consistent with that described herein. Intertek certified products may be verified by the approved Intertek label; other products must be verified by the Authority Having Jurisdiction as meeting the specifications stated herein.