

3M Company
Design No. 3M/PH 60-04
Penetration Firestop
3M™ Fire Barrier IC 15WB+
3M™ Fire Barrier CP 25WB+
CAN/ULC-S115
Rating: See Table 1
Pressure Differential: Positive, 50 Pa (0.20 in. w.g.)

TABLE 1. RATINGS

Penetrating Item	Max. Diameter (nominal)	Max. Opening Diameter	Annular Space	CAN/ULC-S115			
				F	FT	FH	FTH
PEX	1 in.	2 in.	1/4-in. to 5/8-in.	1 Hr	0 Hr	1 Hr	0 Hr

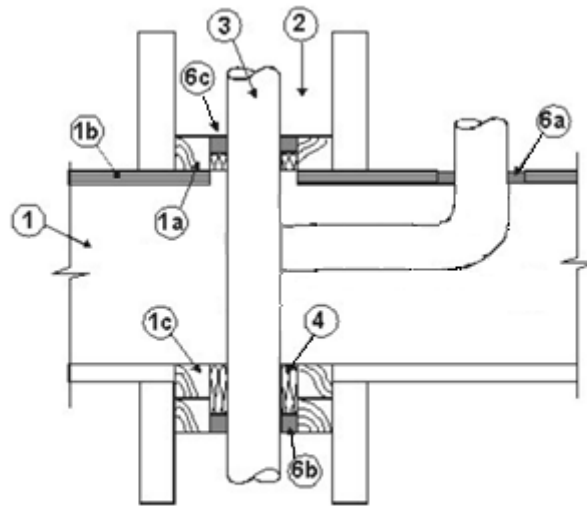


Figure 1. Penetration Detail

- 1. FLOOR/CEILING ASSEMBLY:** Code conforming 1 hour fire-rated floor/ceiling assembly, framed with nominal 2x10 solid sawn or manufactured wood joists, topping optional (not shown).



- A. Sole Plate: Nominal 2x4 or 2x6 solid sawn wood.
 - B. Sub-flooring: Minimum 5/8-in. wood panel sheathing.
 - C. Top Plate: Double Top Plate, nominal 2x4, 2x6 or double plate system.
- 2. WALL ASSEMBLY:** Code conforming 1 hour fire-rated gypsum wallboard assembly with wood framing members.
- 3. PENETRATING ITEMS:** (See also Table 1) Maximum 1-in. nominal diameter PEX tubing for use in Closed (Process & Supply) piping systems.
- 4. PACKING MATERIAL:** Mineral wool, 4 pcf, tightly packed, nominal 1 in. thickness, recessed 3/4 in. from the top surface of the sole plate (Item 1A) and bottom surface of the top plates (Item 1C). Use Intertek-Certified packing material.

- 5. OPENING:** Use a maximum opening diameter of 2 in.

6. FILL, VOID, OR CAVITY MATERIAL:

Certified Products: Sealant

- 3M™ Fire Barrier IC 15WB+
- 3M™ Fire Barrier CP 25WB+

Sub-Flooring Penetrations

- A. Circular Openings:** Apply a 5/8-in. thickness of sealant within the annular space flush with the floor surface.

Circular Openings

- B. Top Plate:** Apply a 3/4-in. thickness of sealant, within the annular space flush with the bottom surface of the top plate.
- C. Sole Plate:** Apply a 3/4-in. thickness of sealant, within the annular space, flush with the top surface of the sole plate.

Consult the listing report on the Directory of Building Products (<https://bpdirectory.intertek.com>) for the edition of the standard(s) evaluated.

Compliance of the assembly described in this Design Listing with the referenced standard relies on verification that the assembly constructed in the field is consistent with that described herein. Intertek certified products may be verified by the approved Intertek label; other products must be verified by the Authority Having Jurisdiction as meeting the specifications stated herein.