

3M Company
Design No. 3M/PH 120-16
Through Penetration
3M™ FireStrap™
3M™ Fire Barrier Mortar
3M™ FireDam FD-150+
3M™ Fire Barrier IC 15WB+
3M™ Fire Barrier CP 25WB+
3M™ Fire Barrier 3000WT
CAN/ULC-S115
Rating: See Table 1
Pressure Differential: Positive, 50 Pa (0.20 in. w.g.)

TABLE 1. RATINGS

Penetrating Item	Max. Pipe Size	CAN/ULC-S115			
		F	FT	FH	FTH
PVC	3 in.	2 Hr	0 Hr	2 Hr	0 Hr
ccABS	3 in.	2 Hr	0 Hr	2 Hr	0 Hr
ABS	3 in.	2 Hr	0 Hr	2 Hr	0 Hr

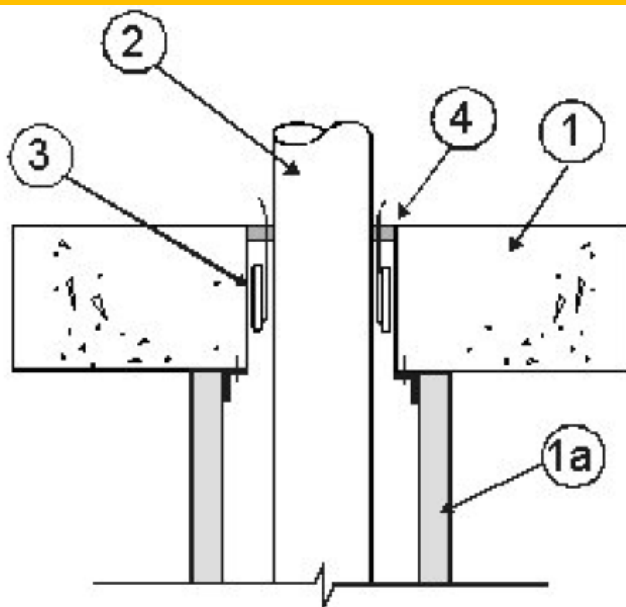


Figure 1. Penetration Detail



1. **FLOOR ASSEMBLY:** Code conforming 2-hour fire-rated floor assembly, nominal 4-1/2-in. thickness, normal or low density cast concrete.

a) **Wall Assembly (Optional):** Gypsum board assembly, constructed with rated or non-rated wallboard, nominal 3-1/2-in. deep steel studs. Steel ceiling track is secured to the underside of the floor assembly.

2. **PENETRATING ITEMS:** (See Table 1) Nominal 3-in. diameter or smaller, Schedule 40, ccABS, ABS, PVC pipes for use in DWV (Drain, Waste and Vent) or Closed (Process and Supply) piping systems. Ratings achieved will equal that of floor assembly.

3. **FIRESTOP SYSTEM COMPONENTS:**

Certified Products:

- **3M™ FireStrap™**
- **3M™ Fire Barrier Mortar**

Install 3M™ FireStrap™ within opening, recessed 1-1/4 in. from either surface, according to the manufacturer's instructions. To reduce hole diameter to the size listed, back fill with 3M™ Fire Barrier Mortar.

Pipe Size	Hole Size
1-1/2 in.	2-1/2 in. to 3 in.
2 in.	3 in. to 3-1/2 in.
3 in.	4-1/2 in. to 5 in.

4. **FILL, VOID, OR CAVITY MATERIAL:**

Certified Products: Sealant

- **3M™ FireDam FD-150+**
- **3M™ Fire Barrier IC 15WB+**
- **3M™ Fire Barrier CP 25WB+**
- **3M™ Fire Barrier 3000WT**

Apply to 1/2-in. thickness flush with the floor surface.

Consult the listing report on the Directory of Building Products (<https://bpdirectory.intertek.com>) for the edition of the standard(s) evaluated.

Compliance of the assembly described in this Design Listing with the referenced standard relies on verification that the assembly constructed in the field is consistent with that described herein. Intertek certified products may be verified by the approved Intertek label; other products must be verified by the Authority Having Jurisdiction as meeting the specifications stated herein.