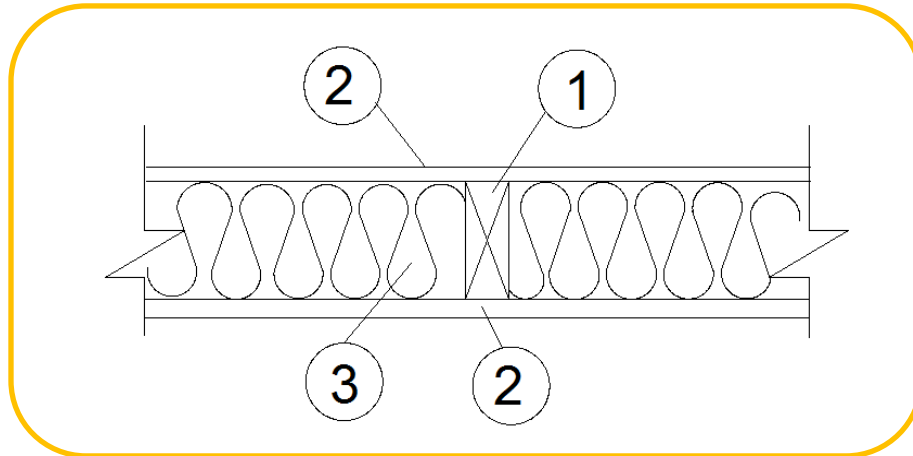

Pacific Woodtech Corporation
Design No. PWT/SFSW 60-01
Laminated Veneer Lumber Wall Stud
PWT LVL Wall Stud
ASTM E119, CAN/ULC S101
Rating: 1-hour restricted load bearing 63%



1. LVL Wall Stud

CERTIFIED PRODUCT: Pacific Woodtech Corporation, PWT LVL Wall Stud

PWT LVL Wall Studs and top and bottom plates, min. size 1-1/2 in. by 3-1/2 in., max spacing 24 in. on center (oc).

2. GYPSUM BOARD: 5/8 in. type X gypsum wallboard installed horizontally, and fastened

with 2-1/4 in. Type S drywall screws located 7 in. oc and 1 in. from horizontal board meeting edges.

3. INSULATION: Min. 2.5 pcf density, 3-1/2 in. thickness rockwool type mineral fiber insulation, friction fit into the stud cavities.

Consult the listing report on the Directory of Building Products (<https://bpdirectory.intertek.com>) for the edition of the standard(s) evaluated.

Compliance of the assembly described in this Design Listing with the referenced standard relies on verification that the assembly constructed in the field is consistent with that described herein. Intertek certified products may be verified by the approved Intertek label; other products must be verified by the Authority Having Jurisdiction as meeting the specifications stated herein.