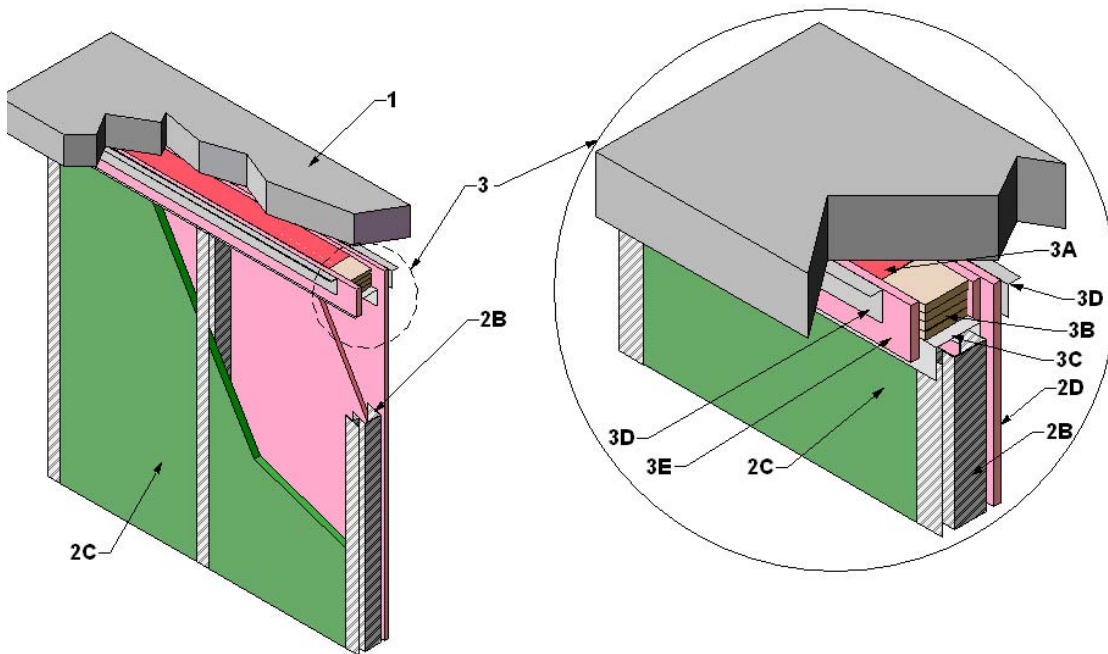

Knauf, LLC
Design Number KL/GBF 120-03
Head of Wall Joint
Knauf Fire Resistant Gypsum Board
Knauf DH-H1 Type X Gypsum Shaftliner
ASTM E1966
Fire Resistance Rating: 2 hr
ASTM E1399 Cycling – Class IV
Max Joint Opening – 2 in. (50mm)
Min Joint Opening – 0 in. (0mm)



1. FLOOR ASSEMBLY: Normal weight concrete floor assembly with a min 2 hr fire resistance.
2. WALL ASSEMBLY: Construct a 2-hr fire-rated gypsum wall assembly in accordance with Intertek Design Number KL/GBF 120-02 consisting of the following elements:
 - A. STEEL TRACK (Not Shown): Install min 2-1/2 in. (64mm) deep, 20 GA (1mm) Knauf "J" Channel galvanized track to the existing floor or wall assemblies using appropriate fasteners for the existing construction.
 - B. STEEL STUDS: Friction fit min 2-1/2 in. (65mm) deep, 20 GA (1mm) Knauf "CT"

Stud, galvanized steel stud into top and bottom steel track (Item 1A) Studs shall be cut to the height of the wall when the Head of Wall Joint (Item 3) is at the min desired opening and accounting for the height of the installed joint.

C. CERTIFIED COMPANY: Knauf, LLC.

CERTIFIED PRODUCT: Type X Gypsum Board

MODEL: Knauf DH-H1

SHAFTLINER GYPSUM BOARD: Friction fit one layer of 1 in. (25.4mm) thick Knauf DH-H1 Type X Gypsum Shaftliner. Cut board so that it is the

same nominal width as the on center (oc) spacing of the steel studs (Item 2B) with a max width of 24 in. Friction fit gypsum board into the "T"-shaped section of the steel studs (Item 2B) and inside and against the long leg of the steel track (Item 2A).

D. CERTIFIED COMPANY: Knauf, LLC.

CERTIFIED PRODUCT: Type X Gypsum Board

MODEL: Knauf GW-TX

GYPSUM BOARD: Install two layers of 5/8 in. (15.9mm) Knauf GW-TX Type X gypsum board to the face of the "C"-shaped section of the steel studs (Item 2B) and short leg of the bottom and side steel tracks (Item 2A). Install base layer using #6 x 1 in. (24mm x 3mm) Type S screws spaced 12 in. (305mm) oc. Install face layer using #6 x 1-1/2 in. (38mm x 3.5mm) type S screws spaced 12 in. (305mm) oc, offset 6 in. (152mm) from those of the base layer.

E. JOINT TAPE AND COMPOUND – (Not Shown) Apply a level 2 finish of vinyl or casein, dry or premixed joint compound applied to the following elements: Apply to face layer of gypsum board (Item 4) in two coats to all exposed fastener heads and gypsum board joints. Embed min 2 in. (51mm) wide paper, plastic, or fiberglass tape in first layer of compound over joints in gypsum board.

3. HEAD OF WALL JOINT – Install head of wall joint using items A through E. Joints are approved for mini opening of 0 in. (0mm) to 2 in. (51 mm).

A. SEALANT (optional): Install nominal 1 in. (25.4mm) wide x 1/4 in. (6.4mm) thick strip of Selleys Fireblock PSA Composite fire and acoustic sealant or Al Muqarram Industry AMI Fire Stop Acrylic Sealant between the Joint Gypsum Board (Item 3B) and the Floor Assembly (Item 1)

B. CERTIFIED COMPANY: Knauf, LLC.

Date Created: February 28, 2014
Project No: 101305960SAT-001A



CERTIFIED PRODUCT: Type X Gypsum Board

MODEL: Knauf GW-TX

JOINT GYPSUM BOARD: Install four (4) layers of 5/8 in. (15.9mm) thick or five (5) layers of 1/2 in. (12.7mm) thick Knauf GW-TX Type X gypsum board to Floor Assembly (Item 1) using the Top Track (Item 3C). Joint Gypsum Board shall be cut to the same width as the top track (min width is 2-1/2 in. (64mm)). Do not use tapered edges of the Knauf GW-TX Type X Gypsum Board.

C. TOP TRACK: Install Knauf head of wall joint top track to the Floor Assembly (Item 1) and Joint Gypsum Board (Item 3B). Min width of Top track is 2-1/2 in. (64mm). Depth of Top Track shall be 3/8 in. (9.5mm) deeper than the desired Head of Wall Joint (Ex. A 2 in. (51mm) joint shall have a Top Track min depth of 2-3/8 in (60 mm) depth). Attach Top Track to Floor Assembly (Item 1) by installing Rawl Fixings 7.5 mm x 100 mm concrete bolts or other equivalent fasteners spaced 24 in. (610mm) oc.

D. ANGLE: Install a 25 GA (0.635mm) galvanized steel angle with one leg measuring 1 in. (25.4mm) and the other angle measuring 3/8 in. (9.5mm) longer than the max Head of Wall Joint opening. Install one angle on each side of the joint/wall opening. Attach Angle to the bottom of the Floor Assembly (Item 1) using RawlPlug ceiling wedge anchors or other equivalent fastener spaced max 24 in. (610mm) oc. Position angle so that the vertical leg is flush against the Gypsum Board (Item 2D) face layer on the finished side of the assembly and nominal 5/8 in. (15.9mm) away from the shaft side of the wall assembly to provide spacing for the Shaft Head of Wall gypsum Board Strip (Item 3E).

E. CERTIFIED COMPANY: Knauf, LLC.

Intertek©

Division 09 Finishes
09 29 00 Gypsum Board
09 29 82 Gypsum Board Fireproofing

Page 3 of 3

CERTIFIED PRODUCT: Type X
Gypsum Board

MODEL: Knauf GW-TX

SHAFT HEAD OF WALL GYPSUM
BOARD STRIP – Install a min 4 in.
(100mm) wide strip of 5/8 in. (15.9mm)
Knauf GW-TX Type X gypsum board

friction fit between the shaft side Angle
(Item 3D) and the Joint Gypsum Board
(Item 3B). Attach gypsum board strip to
angle (Item 3D) using 1 in. (25.4mm)
long screws spaced 24 in. (610mm) oc.