

**Chicago Flameproof and Wood Specialties Corp., dba Flameproof Companies**

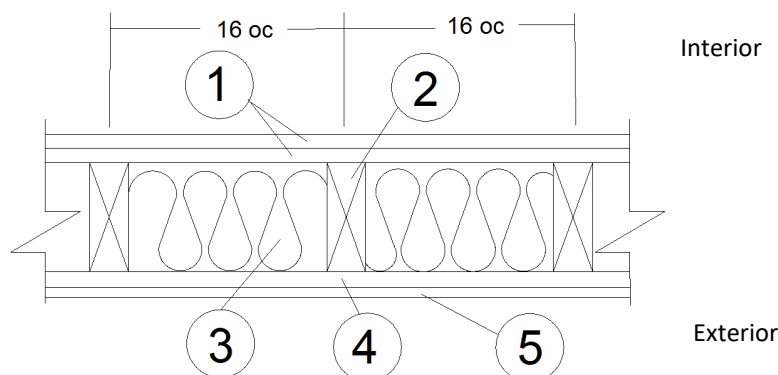
**Design No. CF/WPPS 120-01**

**MagTech™ Fire Retardant Sheathing**

**ASTM E119, UL 263**

**Rating: 2 Hour, Load Bearing 100% Design Load (2015 NDS)**

**Rated From One Side (Interior Side Only)**



1. **GYPSUM BOARD (Interior):** Two layers Type C Gypsum Board as listed below (1A through 1F) complying with ASTM C1396, min. 5/8 in. thick, 4 ft. wide applied vertically, fastened to framing. Face layer joints staggered with base layer and covered with paper tape and joint compound.

- A. American Gypsum Firebloc® Type C
- B. CertainTeed Saint-Gobain Type C
- C. Georgia-Pacific Gypsum Fireguard C®
- D. National Gypsum Gold Bond® Fire-Shield C™
- E. Panel Rey® Fire Rey Type C
- F. USG Sheetrock® Firecode® C

**FASTENERS (Not Shown):**

- A. FACE LAYER – Min. #6 x 2 in. long Type S or W screws spaced max. 8 in. oc and heads covered with joint compound.
- B. BASE LAYER – Min. #6 x 1-5/8 in. long Type S or W screws, spaced max. 6 in. oc.

2. **FRAMING:** Min. 2x4 in. nominal wood studs spaced 16 in. oc, or 2x6 in. nominal wood studs spaced 24 in. oc, double top plates and single bottom plate. 16d common nails (3-1/2 in. x 0.162 in.), 16d box nails (3-1/2 in. x 0.135 in.), or 12d ring nails (3-1/4 in. x 0.135 in.).

3. **INSULATION:** Faced or unfaced mineral fiber insulation min. 3 in. thick (2.8 pcf, nominal) or fiberglass batt insulation min. 3 1/2 in. thick R-13 friction fit between the studs. If 2x6 in. nominal wood studs are used, fiberglass batt insulation shall be min. 5-1/2 in. thick.

**4. SHEATHING (Exterior):**

- A. CERTIFIED PRODUCT – MagTech™ fire retardant sheathing for a fire-resistive wood-frame wall assembly, min. 7/16 in. thick wood structural sheathing laminated with min. 3mm thick fiber reinforced magnesium oxide board on both sides.
- B. INSTALLATION – MagTech™ is applied vertically over the specified framing with min. 2-3/8 in. long, 0.113 in. diameter nails, spaced max. 8 in. oc around the perimeter and max. 12 in. oc in the field. Horizontal joints must be blocked.
- C. CERTIFIED MANUFACTURER – Chicago Flameproof and Wood Specialties Corp., dba Flameproof Companies.



**5. EXTERIOR FACINGS (Optional):** Materials installed in accordance with manufacturer's installation instructions:

- Masonry brick veneer or concrete
- Portland cement or synthetic stucco systems with self-furring metal lath or adhesive base coat
- Hardboard, wood structural panel, plywood, or fiber-cement siding including textures, rough sawn, MDO brushed, patterned, and lap

- Metal siding
- Vinyl siding – exterior plastic
- Gypsum Board Type X, complying with ASTM C1396, min 5/8 in. thick, 4 ft. wide fastened to the framing. May be installed on either side of (4). When used, fasteners for other facings must be adjusted for the additional thickness.

*Consult the listing report on the Directory of Building Products (<https://bpdirectory.intertek.com>) for the edition of the standard(s) evaluated*