

Chicago Flameproof and Wood Specialties Corp., dba Flameproof Companies

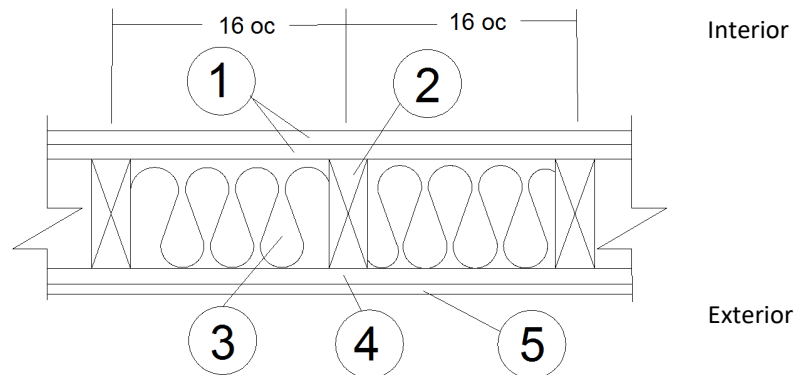
Design No. CF/WPPS 120-02

MagTech™ Fire Retardant Sheathing

ASTM E119, UL 263

Rating: 2 Hour From Interior, 1 Hour From Exterior

Load Bearing 100% Design Load (2015 NDS)



1. GYPSUM BOARD (Interior): Two layers Type C Gypsum Board as listed below (1A through 1F) complying with ASTM C1396, min. 5/8 in. thick, 4 ft. wide applied vertically, fastened to framing. Two layers required for 2 hour rating from the interior. One layer required for 1 hour rating from the exterior. Face layer joints staggered with base layer. All joints covered with paper tape and joint compound.

- A. American Gypsum Firebloc® Type C
- B. CertainTeed Saint-Gobain Type C
- C. Georgia-Pacific Gypsum Fireguard C®
- D. National Gypsum Gold Bond® Fire-Shield C™
- E. Panel Rey® Fire Rey Type C
- F. USG Sheetrock® Firecode® C

FASTENERS (Not Shown):

- A. FACE LAYER (Required for 2 Hour Rating from Interior) – Min. #6 × 2 in. long Type S or W screws spaced max. 8 in. oc and heads covered with joint compound.
- B. BASE LAYER (Required for 2 Hour Rating from Interior and 1 Hour from Exterior) – Min. #6 × 1-5/8 in. long Type S or W screws, spaced max. 6 in. oc.

2. FRAMING: Min. 2×4 in. nominal wood studs spaced 16 in. oc, or 2×6 in. nominal wood studs spaced 24 in. oc, double top plates and single bottom plate fastened together with 16d common nails (3-1/2 in. × 0.162 in.), 16d box nails (3-1/2 in. × 0.135 in.), or 12d ring nails (3-1/4 in. × 0.135 in.).

3. INSULATION: Faced or unfaced mineral fiber insulation min. 3-1/2 in. thick (2.8 pcf, nominal) or fiberglass batt insulation min. 3-1/2 in. thick R-13 friction fit between the studs. If 2×6 in. nominal wood studs are used, fiberglass batt insulation shall be min. 5-1/2 in. thick.

4. SHEATHING (Exterior):

- A. CERTIFIED PRODUCT – MagTech™ fire retardant sheathing for a fire-resistive wood-frame wall assembly, min. 7/16 in. thick wood structural sheathing laminated with min. 3mm thick fiber reinforced magnesium oxide board on each side.
- B. INSTALLATION – MagTech™ is applied vertically over the specified framing with min. 2-3/8 in. long, 0.113 in. diameter nails, spaced max. 8 in. oc around the perimeter and max. 12 in. oc in the field. Horizontal joints must be blocked.



C. CERTIFIED MANUFACTURER – Chicago Flameproof and Wood Specialties Corp., dba Flameproof Companies.

5. EXTERIOR FACINGS (Optional for 2 Hour Rating from Interior): Materials installed in accordance with manufacturer's installation instructions:

- Min. 5/16 in. thickness fiber-cement siding complying with ASTM C1186, installed in accordance with approved manufacturer's instructions

- Brick min. thickness of 2-5/8 in. complying with ASTM C216
- Cement plaster (stucco) min. thickness 3/4 in. on metal lath according to ASTM C926
- Gypsum Board Type X, complying with ASTM C1396, min 5/8 in. thick, 4 ft. wide fastened to the framing. May be installed on either side of (5). When used, fasteners for other facings must be adjusted for the additional thickness.

Consult the listing report on the Directory of Building Products (<https://bpdirectory.intertek.com>) for the edition of the standard(s) evaluated