

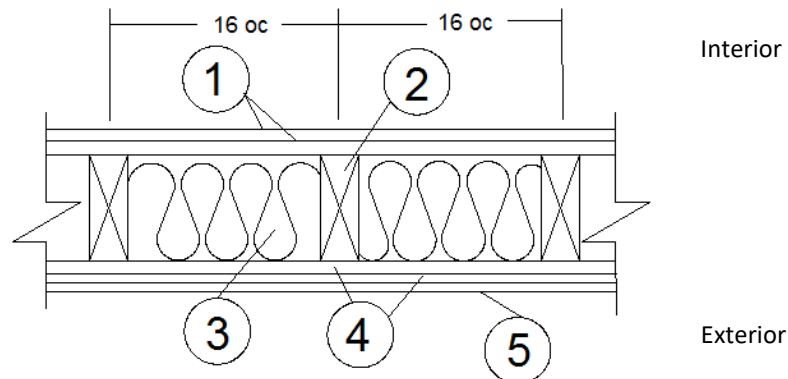
Chicago Flameproof and Wood Specialties Corp., dba Flameproof Companies

Design No. CF/WPPS 120-03

MagTech™ Fire Retardant Sheathing

ASTM E119, UL 263

Rating: 2 Hour, Load Bearing 78% Design Load (2015 NDS)



1. **GYPSUM BOARD (Interior):** Two layers Type C Gypsum Board as listed below (1A through 1F) complying with ASTM C1396, min. 5/8 in. thick, 4 ft. wide applied vertically, fastened to framing. Face layer joints staggered with base layer and covered with paper tape and joint compound.

- A. American Gypsum Firebloc® Type C
- B. CertainTeed Saint-Gobain Type C
- C. Georgia-Pacific Gypsum Fireguard C®
- D. National Gypsum Gold Bond® Fire-Shield C™
- E. Panel Rey® Fire Rey Type C
- F. USG Sheetrock® Firecode® C

FASTENERS (Not Shown):

- A. FACE LAYER – Min. #6 x 2 in. long Type S or W screws spaced max. 8 in. oc and heads covered with joint compound.
- B. BASE LAYER – Min. #6 x 1-5/8 in. long Type S or W screws, spaced max. 6 in. oc.

2. **FRAMING:** Min. 2x6 in. nominal fire retardant treated wood studs, spaced max. 16 in. oc, double top plates and single bottom plate fastened together with 16d common nails.

3. **INSULATION:** Fiberglass batt insulation, min. R-13 or mineral fiber insulation, min. 5-1/2 in. thick friction fit between the studs.

4. **SHEATHING (Exterior):** One layer of MagTech™ fire retardant sheathing applied vertically with min. 2-3/8 in. long, 0.113 in. diameter nails, spaced max. 8 in. oc around the perimeter and max. 12 in. oc in the field. Horizontal joints must be blocked. One layer of Type X gypsum or Type X glass mat gypsum, min. 5/8 in. thick, 4 ft. wide, applied vertically fastened with 7d coated nails, 2-1/4 in. long, 0.0915 in. shank, 1/4 in. heads, 12 in. oc. The required one layer of gypsum may be installed as the base or face layer. The face layer shall be covered with fire resistant protective weather retarder paper.

5. **EXTERIOR FACINGS:** Materials installed in accordance with manufacturer's installation instructions:

- Min. 5/16 in. thickness fiber-cement siding complying with ASTM C1186 installed in accordance with approved manufacturer's instructions
- Brick, min. thickness of 2-5/8 in., complying with ASTM C216



- Cement plaster (stucco), min. thickness 3/4 in. on metal lath according to ASTM C926 Gypsum Board Type X, complying with ASTM C1396, min 5/8 in. thick, 4 ft. wide

fastened to the framing. May be installed on either side of (4). When used, fasteners for other facings must be adjusted for the additional thickness.

Consult the listing report on the Directory of Building Products (<https://bpdirectory.intertek.com>) for the edition of the standard(s) evaluated