

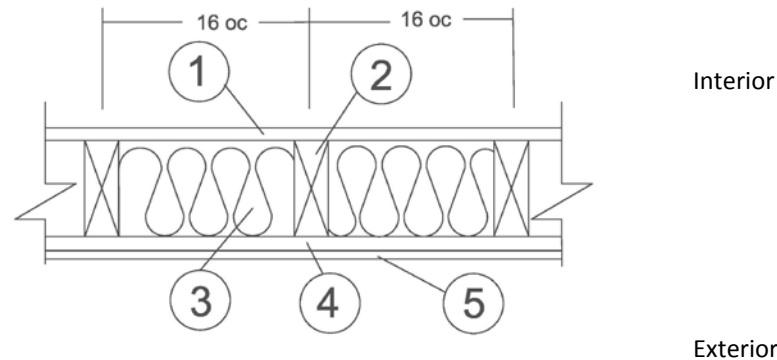
**Chicago Flameproof and Wood Specialties Corp., dba Flameproof Companies**

**Design No. CF/WPPS 60-01**

**MagTech™ Fire Retardant Sheathing**

**ASTM E119, UL 263**

**Rating: 1 Hour, Load Bearing 100% Design Load (2015 NDS)**



**1. GYPSUM BOARD (Interior):** One layer Type X, complying with ASTM C1396 min. 5/8 in. thick, 4 ft. wide applied vertically, fastened to framing. Joints covered with paper tape and joint compound. Fasteners covered with joint compound. Min. #6 × 1-5/8 in. long Type S or W screws, spaced max. 6 in. oc.

**2. FRAMING:** Min. 2×4 in. nominal wood studs spaced 16 in. oc, or 2×6 in. nominal wood studs spaced 24 in. oc, double top plates and single bottom plate fastened together with 16d common nails (3-1/2 in. ×0.162 in.), 16d box nails (3-1/2 in. ×0.135 in.), or 12d ring nails (3-1/4 in. ×0.135 in.).

**3. INSULATION:** Fiberglass batt insulation min. 3-1/2 in. thick R-13 friction fit between the studs. If 2×6 in. nominal wood studs are used, fiberglass batt insulation shall be min. 5-1/2 in. thick.

**4. SHEATHING (Exterior):**

A. **CERTIFIED PRODUCT** – MagTech™ fire retardant sheathing for a fire-resistive wood-frame wall assembly, min. 7/16 in. thick wood structural sheathing laminated with min. 3mm thick fiber reinforced magnesium oxide board on each side, required for 1-hour rating from the exterior. Min. 3mm thick

magnesium oxide board on one side only required for 1 hour rating from the interior.

B. **INSTALLATION** – MagTech™ is applied vertically over the specified framing with min. 2-3/8 in. long, 0.113 in. diameter nails, spaced max. 8 in. oc around the perimeter and max. 12 in. oc in the field. Horizontal joints must be blocked.

C. **CERTIFIED MANUFACTURER** – Chicago Flameproof and Wood Specialties Corp., dba Flameproof Companies.

**5. EXTERIOR FACINGS (Optional for Rating from Interior Only):** Materials installed in accordance with manufacturer’s installation instructions:

- Min. 5/16 in. thickness fiber-cement siding complying with ASTM C1186 installed in accordance with approved manufacturer’s instructions
- Brick min. thickness of 2-5/8 in. complying with ASTM C216
- Cement plaster (stucco) min. thickness 3/4 in. on metal lath according to ASTM C926
- Gypsum Board Type X, complying with ASTM C1396, min 5/8-in thick, 4-ft-wide fastened to the framing. May be installed on either side of (4). When used fasteners for other facings must be adjusted for the additional thickness.