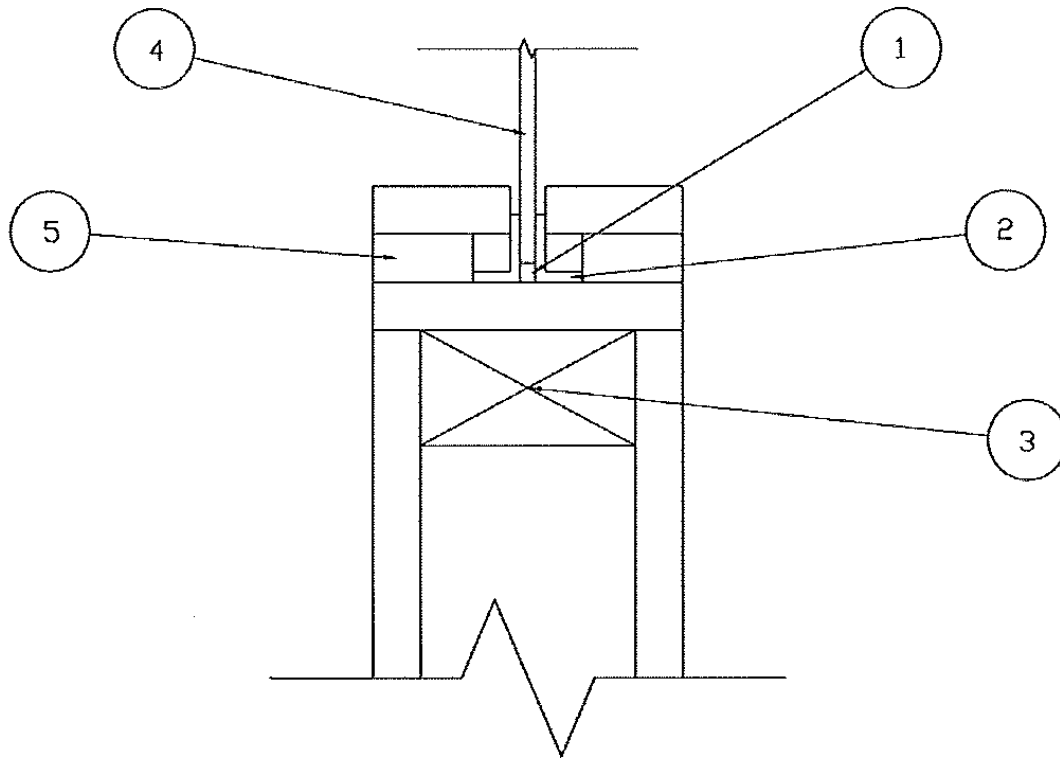


SAFTI FIRST
SF/WA 45-01
EZ Framing with SAFTI FIRST Glazing
UL9 (2009), NFPA 257 (2007)
45 Minutes with Hose



1. CERTIFIED MANUFACTURER: SAFTI FIRST

CERTIFIED PRODUCT: SAFTI FIRST EZ Framing Assembly with SAFTI FIRST Glazing

Glazing that can be used is Ceramic Series, SuperLite II-XL 45, SuperLite I-W & Superlite II-ML 45. The glazing is attached to the gypsum wallboard using 3/4" x 3/4" x 20 gauge steel angles. Stop height is optional as 1/2" or 5/8". 5/8" stop height must be used for approved sizes of SuperLite II-XL 45, SuperLite I-W and larger sizes of Ceramic. 1/2" stop height restricted to 40.5" wide x 74" high glazing for Ceramic. One layer of 5/8" gypsum wallboard to be placed through opening. Wall construction is to be listed and rated gypsum wall assembly. Anchorage shall be every 8" on center.

2. Components:

1. Setting Block (Non-Combustible)
2. 3/4" x 3/4" x 20 Gauge Steel Angles(stop height from top of setting block 1/2" or 5/8" as noted in certified product info 1. above)
3. Rated Gypsum Wall Design
4. Ceramic Series, SuperLite II-XL 45, SuperLite I-W (must use PEMKO FG 3000), Superlite II-ML 45
5. 5/8" Gypsum Wallboard Decorative Finish
6. 1/8" x 1/2" Glazing Tape (Not Shown)