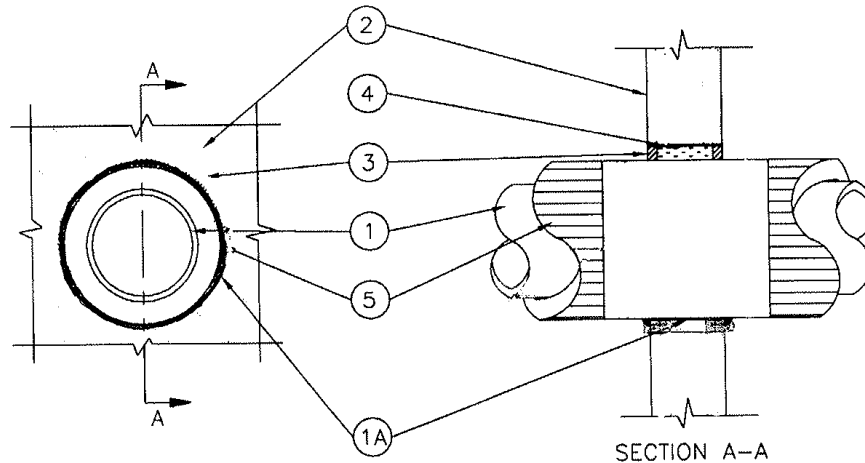


All Weather Insulated Panels
Design No. AWIP/PF 120-01
Single Penetrations, Vertical (Wall)
Models PL42-MW, HE42-MW, ST42-MW, FL42-MW, and MS42-MW Panels
CAN/ULC S115 and ASTM E814
Rating: 2 Hour



1. **PENETRATING ITEM:** See Table 1 below for approved penetrating items. Single penetrations only, max. hole size and annular space not to exceed dimensions stated in the table.

A. METAL SLEEVE – (Optional) Min. 26 GA sheet metal sleeve fit tightly into the opening, flush with the perimeter of the penetration on both surfaces of the wall assembly.

2. WALL ASSEMBLY:

CERTIFIED PRODUCT: All Weather Insulated Panels, Models PL42-MW, HE42-MW, ST42-MW, FL42-MW, and MS42-MW.

Roofing and siding panels; metal roof and wall panels. Galvanized, galvalume, or stainless steel faced panels, with a core of mineral wool insulation.

The panels are max. 42 in. wide, having thicknesses of 4 in., 6 in., or 8 in. The panels are constructed with tongue-and-groove interfaces on the long dimension edges that mate with adjacent panels. Panels may be installed with the long dimensions placed horizontally or vertically.

3. FIRESTOP SYSTEM COMPONENT 1:

PLAIN PIPE PENETRATIONS – PFP Partners Firestop Caulk 4800DW*, 3600EX* installed at a min. thickness of 1/2 in. within the annulus on both surfaces of wall assembly. On 0 in. - 1/4 in. annular spaces, a 1/2 in. diameter fillet bead must be placed around the penetrating item.

THROUGH-INSULATED PIPE PENETRATIONS – PFP Partners Firestop: Two layers of WSI intumescent wrap strip* installed on each side of the wall with 1/4 in. of wrap strip exposed.



4. FIRESTOP SYSTEM COMPONENT 2:

PLAIN PIPE PENETRATIONS – Filler material; mineral rock wool insulation with a min. density of 4-6 pcf compressed a min. of 25% into the annular space at a min. depth of wall thickness minus 1 in. Recess filler material 1/2 in. for sealant placement.

5. **THROUGH-INSULATION MATERIALS (Optional up to max. 8 in.):** 1 in. fiberglass pipe insulation (paper faced), tightly wrapped around the penetrating item, having a min. density of 3.5 lbs./pcf and listed to provide a flame spread rating of 25 and a smoke developed rating of 50.

TABLE 1 – APPROVED PENETRATING ITEMS

Penetrating Material & Size	Max. Hole Size	Annular Space	Fire "F" Rating	Fire/Hose "FH" Rating	Temp. "FTH" Rating
Max. 6 in. ID Copper, or 8 in. ID Sch. 40 and Up Steel and Cast-Iron Pipe	Pipe OD plus 1-1/4 in.	3/8 in. – 7/8 in.	2 Hour	2 Hour	9 Minutes
Fiberglass Insulation Max. 6 in. ID Copper, or 8 in. ID Sch. 40 and Up Steel and Cast-Iron Pipe	Pipe OD plus 3 in.	1/4 in.	2 Hour	2 Hour	53 Minutes in 4 in. panel, 2 Hour in 6 in. panel
30 in. Steel Pipe Sch. 40 and Up	Pipe OD plus 2-1/4 in.	3/4 in.	2 Hour	0	38 Minutes

*Intertek certified products, see Intertek Spec 32894.

Consult the listing report on the Directory of Building Products (<https://bpdirectory.intertek.com>) for the edition of the standard(s) evaluated.

Compliance of the assembly described in this Design Listing with the referenced standard relies on verification that the assembly constructed in the field is consistent with that described herein. Intertek certified products may be verified by the approved Intertek label; other products must be verified by the Authority Having Jurisdiction as meeting the specifications stated herein.