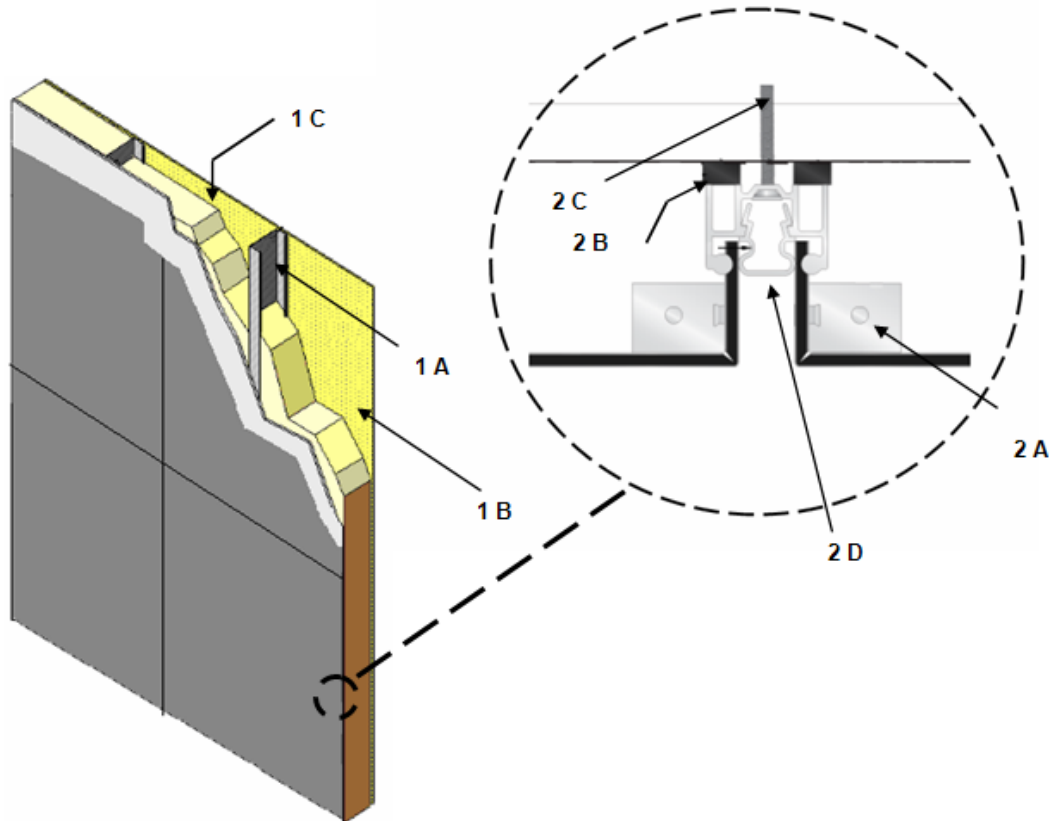

Mitsubishi Chemical Composites America, Inc.
Design No. MCA/CWP 30-01
4mm and 6mm Alpollic® for Wall Panels
NFPA 285
Rating: Meets the Conditions of Acceptance



- 1. GYPSUM WALL ASSEMBLY:** Use a one hour fire-rated wall assembly meeting the min. construction requirements shown below and any additional requirements specified by the supporting Design Listing:

A. STEEL STUDS – Install min. 18 GA steel studs, with 3-5/8 in. depth, at max. spacing of 16 in. on center (oc).

B. GYPSUM BOARD – Attach one layer of 5/8 in. thick Type X gypsum board on each face of steel studs (Item 1A). Fasten the face layer of gypsum board with 1-5/8 in. long, Type "S" drywall

screws spaced 8 in. on oc along the perimeter and joints, and 12 in. oc in the field of the sheathing.

The gypsum board joints must be taped and treated with joint compounds complying with ASTM C474 and ASTM C475/C475M.

C. INSULATION – Fill stud cavities with 3-1/2 in., R-11, fiberglass insulation.

- 2. EXTERIOR WALL COVERING:** Incorporate the following construction features:

CERTIFIED MANUFACTURER:
Mitsubishi Chemical Composites
America, Inc.

CERTIFIED PRODUCT: Composite
Wall Panels

MODEL: 4mm and 6mm thick Alpolic®
fr Wall Panels.

EXTERIOR CLADDING SYSTEM:
Construct "Rout and Return" Universe
Corporation, Universe®2000R Dry-set
Wall System using Alpolic® fr Wall
Panels. Install in accordance with the
wall system manufacturer's
specifications and the following
requirements:

A. SPLINE ANGLES – Angles are shop
attached at corners with F.H Pop Rivets.

B. PLASTIC SHIM – Use 1/8 in. +
1/16 in. plastic shim.

C. EXTRUSION FASTENER – #10 ×
1-3/4 in. H.W.H Head, spaced 16 in. oc
for the first layer of gypsum board (Item
1B), and #10 × 2-1/2 in. H.W.H Head,
16 in. oc for the second layer of gypsum
board.

D. ALUMINUM EXTRUSION
RETAINER – Use 5/8 in. aluminum
retainers between vertical and horizontal
joints.

E. PANEL STIFFENERS (Not Shown) –
Attach aluminum stiffeners at a max.
spacing of 24 in. with structural silicone
sealant.