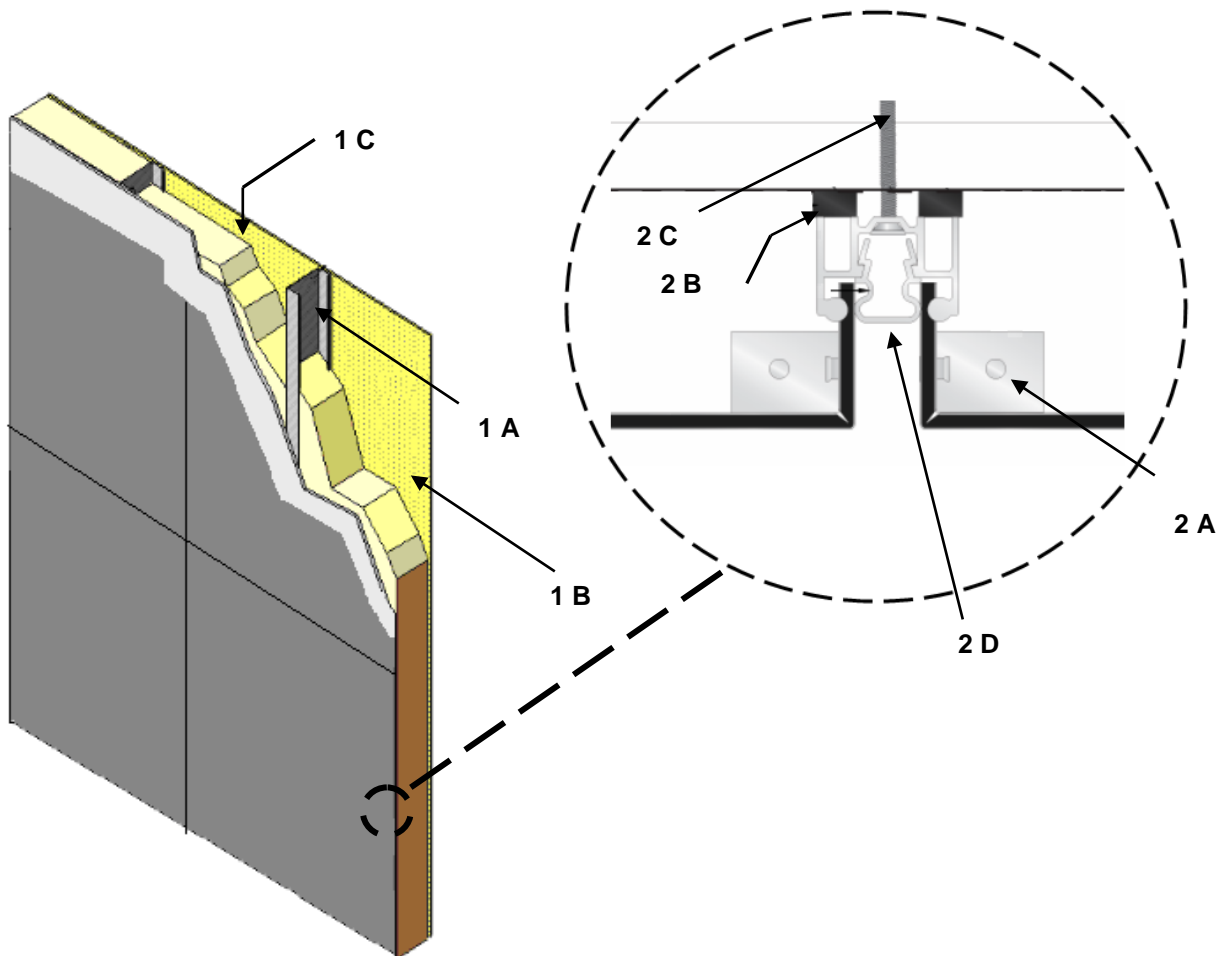


---

**Mitsubishi Chemical Composites America, Inc.**  
**Design No. MCA/CWP 60-01**  
**4mm and 6mm Alpolic® for Wall Panels**  
**Non-load Bearing Fire Resistance Rated Wall Assemblies**  
**ASTM E119**  
**Rating: 1 Hour**

---



**1. GYPSUM WALL ASSEMBLY:** Use a one hour fire-rated wall assembly meeting the min. construction requirements shown below and any additional requirements specified by the supporting Design Listing:

A. STEEL STUDS – Install min. 18 GA steel studs, with 3-5/8 in. depth, at max. spacing of 16 in. on center (oc).

B. GYPSUM BOARD – Attach one layer of 5/8 in. thick Type X gypsum board on each face of steel studs (Item 1A). Fasten the face layer of gypsum board with 1-5/8 in. long, Type "S" drywall screws spaced 8 in. oc along the perimeter and joints, and 12 in. oc in the field of the sheathing.

The most exterior layer of gypsum sheathing joints must be taped and treated with joint compounds complying with ASTM C474 and ASTM C475/C475M.

C. INSULATION – Fill stud cavities with 3-1/2 in., R-13, fiberglass insulation.

**2. EXTERIOR WALL COVERING:**  
Incorporate the following construction features:

**CERTIFIED MANUFACTURER:**  
Mitsubishi Chemical Composites America, Inc.

**CERTIFIED PRODUCT:** Composite Wall Panels

**MODEL:** 4mm and 6mm thick Alpolic® fr Wall Panels.

**EXTERIOR CLADDING SYSTEM:**  
Construct "Rout and Return" Universe Corporation, Universe®2000R Dry-set Wall System using Alpolic® fr Wall

Panels. Install in accordance with the wall system manufacturer's specifications and the following requirements:

A. SPLINE ANGLES – Angles are shop attached at corners with F.H Pop Rivets.

B. PLASTIC SHIM – Use 1/8 in. + 1/16 in. plastic shim.

C. EXTRUSION FASTENER – #10 x 1-3/4 in. H.W.H Head, spaced 16 in. oc for the first layer of gypsum board (Item 1B), and #10 x 2-1/2 in. H.W.H Head, 16 in. oc for the second layer of gypsum board.

D. ALUMINUM EXTRUSION RETAINER – Use 5/8 in. aluminum retainers between vertical and horizontal joints.

E. PANEL STIFFENERS (Not Shown) – Attach aluminum stiffeners at a max. spacing of 24 in. with structural silicone sealant.