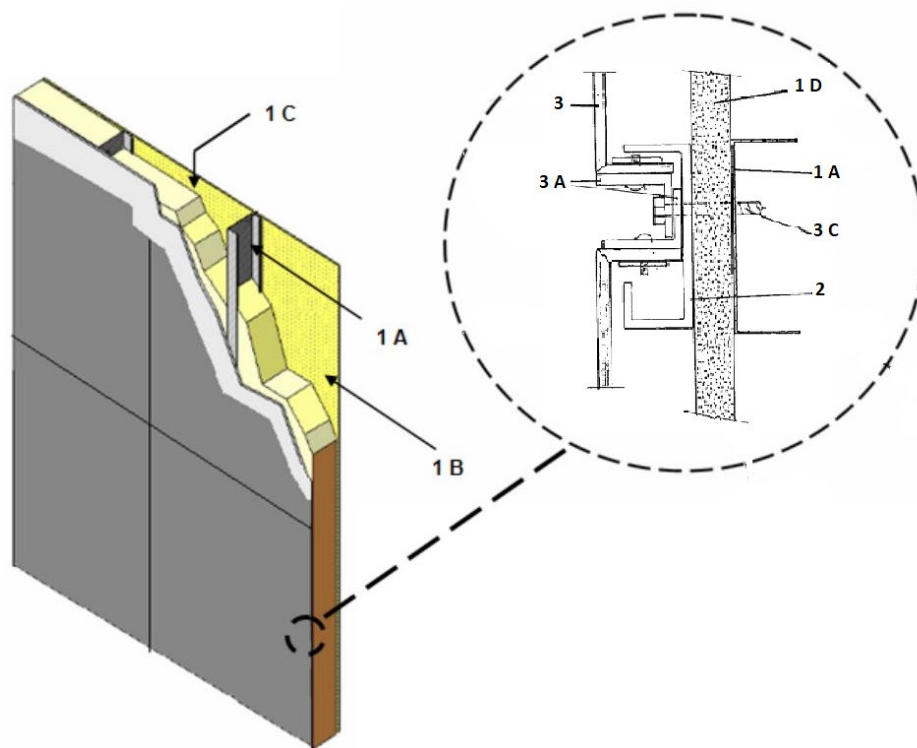


Mitsubishi Chemical Composites America, Inc.
Design No. MCA/CWP 25-01
Exterior Cladding
4 mm Alpolic® FR Wall Panels
CAN/ULC S134
Rating: Meets Conditions of Acceptance



1. SUPPORTING WALL CONSTRUCTION: The supporting wall to be constructed per the applicable Building Code, and per the following provisions of this Design Listing:

- A. **STUDS** – 18 GA nominal 2 in. x 4 in. x 1-3/4 in. steel studs located 24 in. on center (oc), fastened to 18 GA tracks using two 1/2 in. self-tapping wafer-head sheet metal screws at each end. Fasten additional backing strips made from 18 GA track at each stud intersection with one 1/2 in. self-tapping wafer-head sheet metal screw to accommodate the fastening of the horizontal drain channel extrusions.
- B. **INTERIOR GYPSUM BOARD** – Attach conventional 1/2 in. gypsum wallboard, oriented horizontally, and fasten with 1-3/8 in. Type S gypsum wallboard screws located 12 in. oc.
- C. **INSULATION** – Fill stud cavities with nominal 3-1/2 in. fiberglass batt insulation.
- D. **EXTERIOR SHEATHING** – Attach 1/2 in. conventional exterior gypsum sheathing to the exterior side of steel studs, oriented horizontally, and fasten with 1-3/8 in. Type S screws located 12 in. oc.



2. CHANNEL EXTRUSION: Install horizontal and vertical aluminum channel extrusions for water drainage. Fasten extrusions to the steel studs and horizontal backing strips (Item 1) in the wall using 1-1/2 in. long, 3/16 in. diameter, self-drilling, self-tapping hex-head screws every 24 in. vertically and at each joist intersection horizontally.

3. CERTIFIED MANUFACTURER: Mitsubishi Chemical Composites America, Inc.

CERTIFIED PRODUCT: Composite Wall Panels

CERTIFIED MODEL: 4 mm thick Alpolic® FR Wall Panels

Place panels starting from the bottom, such that the perimeter mounting angles are centered in the drain channels, and fasten using 1-1/4 in. long self-drilling, self-tapping hex-head screws located at each joist intersection in horizontal joints and every 12 in. on vertical joints; overlap perimeter extrusions of adjacent panels.

EXTERIOR CLADDING SYSTEM: Construct "Route and Return" Universe Corporation, Universe®2000R Dry-set Wall System using Alpolic® FR Wall Panels. Install in accordance

with the wall system manufacturer's specifications and the following requirements:

A. ALUMINUM MOUNT EXTRUSIONS – Angles are shop attached at corners with self-tapping screws 10 in. to 12 in. oc.

B. PLASTIC SHIM (Not Shown) – Use 1/8 in. + 1/16 in. plastic shim.

C. EXTRUSION FASTENER – Self-drilling and self-tapping screws located 10 in. to 12 in. oc.

D. ALUMINUM EXTRUSION RETAINER (Not Shown) – Use 5/8 in. aluminum retainers between vertical and horizontal joints.

E. PANEL STIFFENERS (Not Shown) – Attach aluminum stiffeners at a max. spacing of 24 in. with structural silicone sealant.

4. OPENING: (Not Shown) Install 2 in. × 6 in. × 16 GA galvanized steel flashing to the top of the window opening. Fit a horizontal strip of rockwool insulation 10 in. in height × 2 in. in depth into the air space between the wall and the inside surface of the panels 76 in. oc above the opening.

Consult the listing report on the Directory of Building Products (<https://bpdirectory.intertek.com>) for the edition of the standard(s) evaluated.

Compliance of the assembly described in this Design Listing with the referenced standard relies on verification that the assembly constructed in the field is consistent with that described herein. Intertek certified products may be verified by the approved Intertek label; other products must be verified by the Authority Having Jurisdiction as meeting the specifications stated herein.