

Mitsubishi Chemical Composites America, Inc.
Design No. MCA/CWP 25-02
Exterior Cladding
4 mm Alpolic® FR ACM Wall Panels
CAN/ULC S134
Rating: Meets Conditions of Acceptance

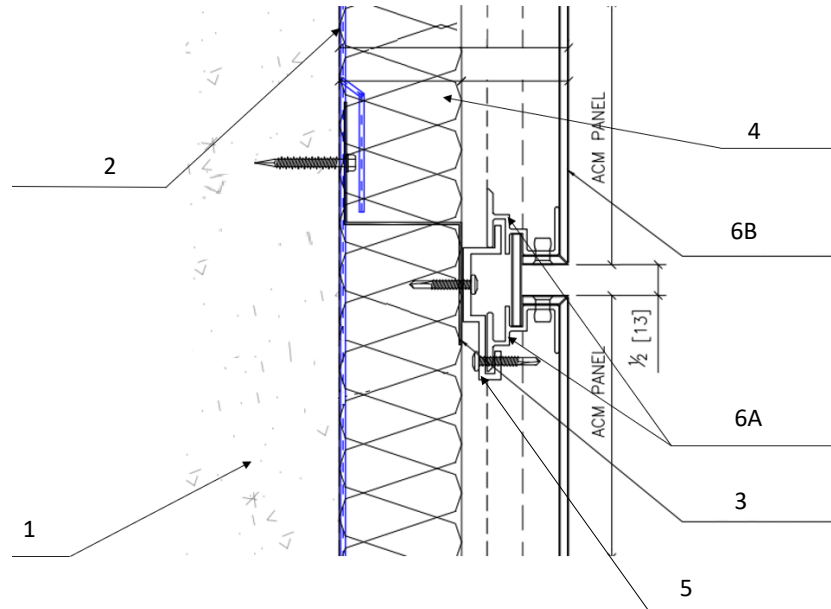


Figure 1. Wall Assembly

- 1. SUPPORTING WALL CONSTRUCTION:** The supporting wall must be constructed per the applicable Building Code requirements for noncombustible construction.
- 2. WEATHER BARRIER:** Adhere one layer of Henry® BlueskinVP® 160 installed per manufacturer's instructions.
- 3. Z-GIRTS:** 2 in. x 2 in. x 2 in. 18 GA Aluminum Z-girts installed horizontally. Z-girts are spaced 36-1/2 in. apart starting from the top of the window opening. The spacing varies depending on the height of the panels. Z-girts are secured with 3/16 in. x 1-3/4 in. concrete fasteners spaced 16 in. on center (oc).
- 4. INSULATION:** Install nominal 2 in. Semi-Rigid Rockwool CavityRock insulation between the weather barrier and the ACM panels. The insulation is friction fitted between the Z-girts. The density of the insulation is 4.3 lb/ft³.
- 5. WALL CLIPS:** Install 2-1/2 in. Cladco C2000 System 6063 T6 aluminum wall clips to the Z-girts, spaced at 16 in. oc using 1/4 in. x 1 in. self-drilling fasteners.
- 6. EXTERIOR CLADDING SYSTEM:**
CERTIFIED PRODUCT: Mitsubishi Chemical Composites America, Inc., 4 mm Alpolic® FR ACM Wall Panels.



Install the panels using the following Cladco C2000 Extrusion System components:

- A. PRE-INSTALLED ALUMINUM EXTRUSIONS – Aluminum extrusions are riveted into the panel on each corner using Aluminum Huck Magna-Lok MGL100-B6-6 Rivets.
 - B. COMPOSITE PANEL – Secure the 4mm Alpolic® FR ACM panels to the wall clips using 1/4 in. x 1 in. self-drilling fasteners, spaced at 16 in. oc through the pre-installed aluminum extrusions around the perimeter of the panels. The panels are installed in a manner to leave a 1/2 in. gap between panel edges, vertically and horizontally.
- 7. OPENING FLASHING:** (Not Shown) Install the panels using the following components:
- A. U-GIRTS – 2 in. 18 GA aluminum U-girts installed at the lowest part of the wall, at the header of the window opening, and at the top section of the wall. U-girts are secured with 3/16 x 1-3/4 concrete fasteners spaced 16 in. oc.
 - B. L-GIRTS – 2 in. x 1-1/2 in. 18 GA aluminum L-girt is installed at the bottom edge of the window opening. The L-girt is secured with 3/16 x 1-3/4 concrete fasteners spaced 16 in. oc.
 - C. J-STARTER – Install continuous 6063 T6 aluminum J-starter above the window opening.
 - D. L-TRIM – Install 1/2 in. x 3 in. ACM L-trim with drainage to the header of the window opening and without drainage to the bottom edge of the window opening.

Consult the listing report on the Directory of Building Products (<https://bpdirectory.intertek.com>) for the edition of the standard(s) evaluated.

Compliance of the assembly described in this Design Listing with the referenced standard relies on verification that the assembly constructed in the field is consistent with that described herein. Intertek certified products may be verified by the approved Intertek label; other products must be verified by the Authority Having Jurisdiction as meeting the specifications stated herein.