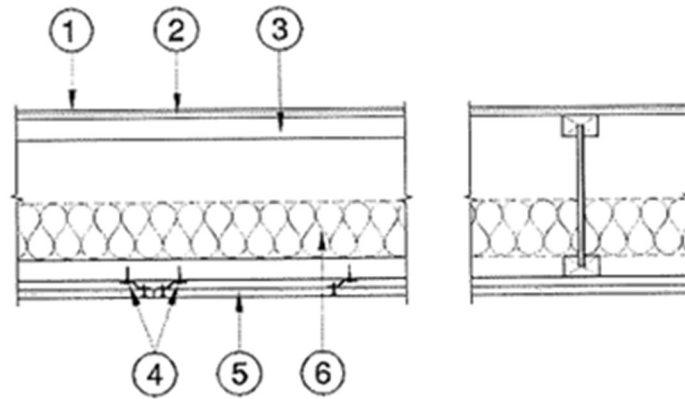


IB EWP Inc.
Design No. IB/MWP 45-01
Floor/Ceiling Assembly
IB EWP Inc. (IB) Series I Joists
ASTM E119 and CAN/ULC S101
Fire Resistance Rating: 3/4 Hour



1. **FLOOR TOPPING (Optional):** Lightweight concrete or proprietary topping.
2. **SUB-FLOORING:** Min. 5/8 in. thick plywood or Oriented Strand Board (OSB) installed perpendicular to joists, with end joints staggered. Min. sheathing thickness (based on framing spacing) and fastener schedules shall comply with the Code.
3. **CERTIFIED MANUFACTURER:** IB EWP Inc.

CERTIFIED PRODUCT: IB I Joist

CERTIFIED MODEL: IB600, IB800 or IB 900x

I-joists having a min. depth of 9-1/2 in., installed at 24 in. on center (oc) max.

4. **RESILIENT CHANNELS:** Min. 0.019 in. thick (28 GA) galvanized steel resilient channel attached perpendicular to the bottom flange of the joists with one 1-5/8 in. Type W screw. Channels spaced 16 in. oc max. Additional channels are required at gypsum board end

joints such that each board is attached to a separate channel. These additional channels shall extend to the next joist on each side of the board end joint.

5. **GYPSON WALLBOARD:** Min. 5/8 in. thick Type X gypsum wallboard installed with long dimension perpendicular to resilient channels and fastened to each channel with min. 1-1/8 in. long Type S drywall screws. Fasteners spaced 12 in. oc in the field, 8 in. oc at wallboard end joints, and 1-1/2 in. from panel edges and ends. Edge joints shall be centered on joists. End joints of wallboard staggered a min. of one channel spacing.
6. **INSULATION (Optional):** When installed, insulation shall be supported above the top flange by stay wires spaced 16 in. oc.
7. **FINISH SYSTEM (Not Shown):** Face layer joints covered with tape and coated with joint compound. Screw heads covered with joint compound.