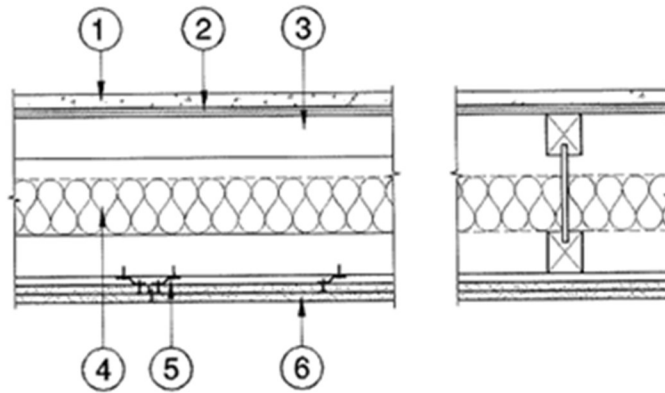


**IB EWP Inc.**  
**Design No. IB/MWP 60-02**  
**Floor/Ceiling Assembly**  
**IB EWP Inc. (IB) Series I-Joists**  
**ASTM E119 and CAN/ULC S101**  
**Fire Resistance Rating: 1 Hour**



1. **FLOOR TOPPING (Optional):** Lightweight concrete or proprietary topping.
2. **SUB-FLOORING:** Min. 5/8 in. thick plywood or Oriented Strand Board (OSB) installed perpendicular to joists, with end joints staggered. Min. sheathing thickness (based on framing spacing) and fastener schedules shall comply with the Code.
3. **CERTIFIED MANUFACTURER:** IB EWP Inc.  
  
**CERTIFIED PRODUCT:** IB I Joist  
  
**CERTIFIED MODEL:** IB600, IB800 or IB900x  
  
I-joists having a min. depth of 9 1/2 in., installed at 24 in. on center (oc) max.
4. **INSULATION (Optional):** When installed, insulation shall be supported by stay wires spaced 16 in. oc.
5. **RESILIENT CHANNEL (Optional):** Min. 0.019 in. thick (28 GA) galvanized steel resilient channel attached perpendicular to the bottom flange of the joists with one 1-5/8 in. Type W screw.

Channels spaced a max. of 16 in. oc. The max. channel spacing may be increased to 24 in. oc when joists are spaced a max. of 16 in. oc.

6. **GYPSUM BOARD:** Two layers of min. 1/2 in. thick Type X gypsum wallboard attached with the long dimension perpendicular to the resilient channels (or joists) as follows:
  - A. **WALLBOARD BASE LAYER** – Base layer of wallboard attached to resilient channels (or joists) using 1-1/4 in. Type S drywall screws at 12 in. oc. When resilient channels are installed, edge joints shall be centered on joists. End joints of wallboard shall be centered on a resilient channel (or joist) staggered a min. of one channel (or joist) spacing.
  - B. **WALLBOARD FACE LAYER** – Face layer of wallboard attached to resilient channels (or joists) through base layer using 1-5/8 in. Type S drywall screws, spaced 12 in. oc in the field and 8 in. oc at the end joints. Edge joints of wallboard face layer shall be offset a min. distance equal to one joist spacing from those of the base layer. End joints



shall be offset from base layer joints by a min. of 24 in. and shall be centered in-between channel (or joist) spacing. Additionally, wallboard face layer is attached to base layer with 1-1/2 in. Type G drywall screws spaced 8 in. oc, placed 1-1/2 in. from face layer end joints.

7. **FINISHED SYSTEM (Not Shown):** Face layer joints covered with tape and coated with joint compound. Screw heads covered with joint compound.