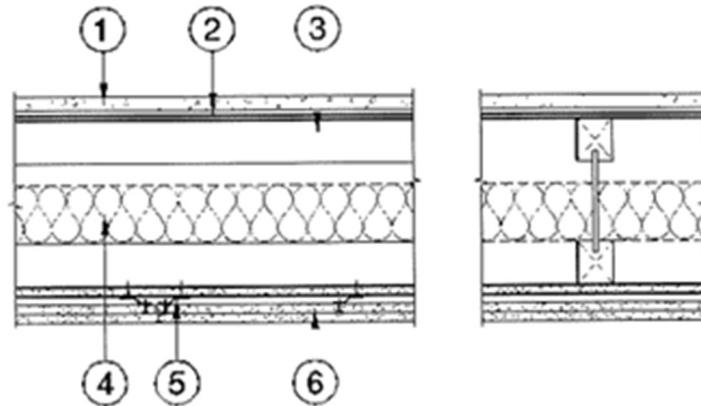


IB EWP Inc.
Design No. IB/MWP 120-01
Floor/Ceiling Assembly
IB EWP Inc. (IB) Series I Joists
ASTM E119 and CAN/ULC S101
Fire Resistance Rating: 2 Hour



- 1. FLOOR TOPPING (Optional):** Lightweight concrete or proprietary topping.
- 2. SUB-FLOORING:** Min. 5/8 in. thick plywood or Oriented Strand Board (OSB) installed perpendicular to joists, with end joints staggered. Min. sheathing thickness (based on framing spacing) and fastener schedules shall comply with the Code.
- 3. CERTIFIED MANUFACTURER:** IB EWP Inc.

CERTIFIED PRODUCT: IB I Joist

CERTIFIED MODEL: IB600, IB800 or IB900x

I-joists having a min. depth of 9-1/2 in., installed at 24 in. on center (oc) max.
- 4. INSULATION (Optional):** When installed, insulation shall be installed above the joist flanges and supported by stay wires spaced 16 in. oc.
- 5. RESILIENT CHANNELS:** Min. 0.019 in. thick (28 GA) galvanized steel resilient channels, attached perpendicular to joists using one 1-5/8 in. long drywall screw. Resilient channels spaced 16 in. oc (channels installed after the first layer of gypsum board and is used to support the second and third layers of gypsum wallboard).
- 6. GYPSUM WALLBOARD:** Three layers of min. 5/8 in. thick Type C gypsum wallboard as follows:
 - A. WALLBOARD BASE LAYER – Base layer of wallboard installed perpendicular to the joists and directly attached to the bottom flange using 1-5/8 in. Type S drywall screws at 12 in. oc. End joints of wallboard centered on bottom flange and staggered a min. of one joist spacing.
 - B. WALLBOARD MIDDLE LAYER – Middle layer of wallboard attached to channels using 1 in. Type S drywall screws spaced 12 in. oc, with the long dimension of wallboard



perpendicular to channels. Edge joints shall be centered between the joists. End joints staggered a min. of one channel spacing and offset from the edge joints in the base layer a min. of one channel spacing.

- C. **WALLBOARD FACE LAYER** – Face layer of wallboard attached to channels through middle layer using 1-5/8 in. Type S drywall screws, spaced 8 in. oc in the field and on the edge with a min. 3/4 in. edge distance. Edge joints of face layer of wallboard offset

a distance equal to the joist spacing from those of middle layer. End joints of face layer of wallboard staggered a min. of one channel spacing with respect to the middle layer end joint.

- 7. FINISHED SYSTEM (Not Shown):** Face layer joints covered with tape and coated with joint compound. Screw heads covered with joint compound.