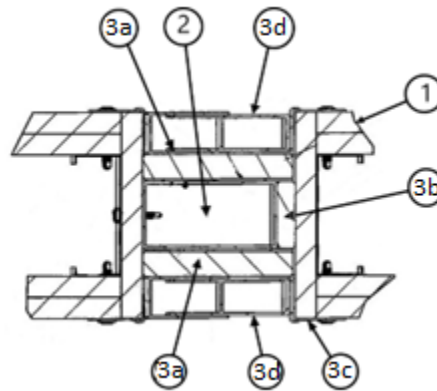


**Gordon Inc**  
**Design No. GN/JF 120-01**  
**Fire-Rated Adjustable Partition**  
**Mullion Mate® PRO, FR Joint Assembly**  
**UL 2079**  
**Rating: 2 Hour**  
**CAN/ULC-S115**  
**F Rating, FT Rating, FH Rating and FTH Rating – 2 Hour**  
**Movement Cycling: None**



**Figure 1. Joint Cross Section**

1. **SUPPORTING CONSTRUCTION:** Use a 2-hour fire resistance rated wall assembly with the following minimum construction requirements:
  - A. Framing: Use steel studs and track as per the listed design for the fire rated wall assembly.
  - B. Gypsum Wallboard: Use two layers of 5/8 in. Type X gypsum board as per the listed design of the fire rated wall assembly. Install a single layer of 5/8-in. Type X gypsum board to cover the exposed framing within the joint opening. Fasten to the framing using the same screws and spacing as required elsewhere in the listed design for the fire rated wall assembly.
  - C. Joint Opening: Create a joint opening between adjacent wall assemblies. See Table 1 for Joint Opening Size.

Model	Joint Opening
MMFR 4	4 in. to 5.5 in.
MMFR 5.5	5.5 in. to 7 in.
MMFR 7	7 in. to 8.5 in.

**Table 1. Joint Opening Size**

2. **ALUMINUM EXTRUSION:** Use a continuous length of 2 in. deep rectangular aluminum tube with minimum 0.125 in. wall thickness. See Table 2 for width. The width shall be sized to create a 1/2 in. wide space between the aluminum extrusion and the adjacent wall. Fasten the extrusion to the supporting construction framing as shown in Figure 1 using minimum No. 10 screws spaced maximum 12 in. on center (oc).



Model	Aluminum Extrusion Width
MMFR 4	3.5 in. to 5 in.
MMFR 5.5	5 in. to 6.5 in.
MMFR 7	6.5 in. to 8 in.

Table 2. Aluminum Extrusion Width

**3. FIRE-RATED JOINT:** Wall-to-Wall Fire-Rated Joint Assembly

**CERTIFIED PRODUCT:** Intertek-Certified, Gordon Inc. Mullion Mate® PRO, FR Joint Assembly

Install the following supplied components:

- A. Mullion Mate® PRO, FR Joint Assembly Fire Blanket:** Use continuous length of the supplied insulation blanket to fill the joint opening.
- B. PACKING MATERIAL:** Use a continuous

length of supplied 3/4 in. thick, nominal 6 pcf, high-temperature fiber insulation to fill the 1/2 in. opening on the side of the aluminum extrusion. Fill the entire joint length.

- C. CORNER Z-PROFILES:** Install continuous length of supplied 20 GA galvanized steel Z-profile supplied by joint manufacturer. Fasten to each corner of the supporting constructions with No. 8 sheet metal screws, spaced 6 in. oc.
- D. Mullion Mate® PRO, FR:** Install continuous length of spring-loaded expandable units on both sides of the joint as shown in Figure 1. Remove paper backing from the adhesive strips on the sides and expand the units into place per the manufacturer’s installation instructions.

Consult the listing report on the Directory of Building Products (<https://bpdirectory.intertek.com>) for the edition of the standard(s) evaluated.

Compliance of the assembly described in this Design Listing with the referenced standard relies on verification that the assembly constructed in the field is consistent with that described herein. Intertek certified products may be verified by the approved Intertek label; other products must be verified by the Authority Having Jurisdiction as meeting the specifications stated herein.