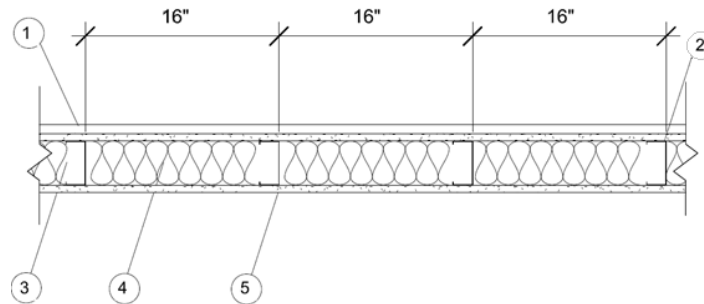


---

**Ply Gem Residential Solutions**  
**Design No. PGR/PS 60-01**  
**Vinyl Siding**  
**Georgia Pacific, Mastic, Mitten, Ply Gem Performance Collection,**  
**TrueWall and Variform Vinyl Siding**  
**ASTM E119**  
**Rating: 1 Hour**

---



**1. VINYL SIDING:** Ply Gem Residential Solutions vinyl siding products are extruded, rigid polyvinyl chloride (PVC) siding.

**CERTIFIED PRODUCT:** Georgia Pacific, Mastic, Mitten, Ply Gem Siding Performance Collection, TrueWall and Variform Vinyl Siding, 1 Hour, Non-Load Bearing Wall Assembly.

See VSI listing report PCL-0701 for certified products.

**2. EXTERIOR SHEATHING:** Min. 5/8 in. gypsum sheathing Type X meeting ASTM C1396, vertical, attached with #6 Type S 1-5/8 in. long, self-drilling drywall screws.

**3. STEEL STUDS:** Min. 3-5/8 in., 28 mil steel framing, a max. of 16 in. on center.

**4. INSULATION:** Glass fiber batt insulation (ASTM C665 Type II) in stud cavities.

**5. INTERIOR SHEATHING:** 5/8 in. gypsum board Type X meeting ASTM C1396, vertical or horizontal, attached with #6 Type S 1-5/8 in. long, self-drilling drywall screws.

**6. JOINTS AND FASTENER HEADS:** All interior and exterior gypsum board joints must be taped and treated with joint compound in accordance with ASTM C840. Fastener heads must be treated with joint compound in accordance with ASTM C840.

Consult the listing report on the Directory of Building Products (<https://bpdirectory.intertek.com>) for the edition of the standard(s) evaluated.

*Compliance of the assembly described in this Design Listing with the referenced standard relies on verification that the assembly constructed in the field is consistent with that described herein. Intertek certified products may be verified by the approved Intertek label; other products must be verified by the Authority Having Jurisdiction as meeting the specifications stated herein.*