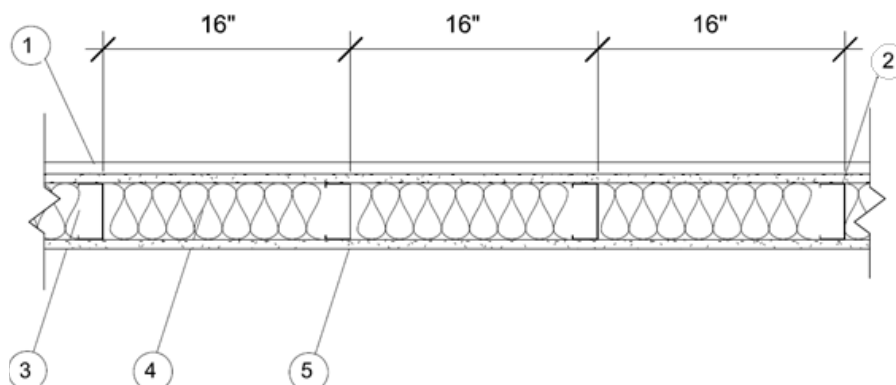

Ply Gem Residential Solutions
Design No. PGR/PS 60-02
Polypropylene Siding
Georgia Pacific, Mastic, Ply Gem Performance Collection,
TrueWall and Variform Polypropylene Siding
ASTM E119
Rating: 1 Hour



- 1. POLYPROPYLENE SIDING:** Ply Gem Residential Solutions polypropylene siding products are molded, polypropylene (PP) siding.

CERTIFIED PRODUCT: Georgia Pacific, Mastic, Ply Gem Performance Siding Collection, TrueWall and Variform Polypropylene Siding, 1 Hour, Non-Load Bearing Wall Assembly.

See VSI listing report PCL-0703 for certified products.

- 2. EXTERIOR SHEATHING:** Min. 5/8 in. Type X gypsum sheathing meeting ASTM C1396, vertical, attached with #6 Type S 1-5/8 in. long, self-drilling drywall screws.

- 3. STEEL STUDS:** Min. 3-5/8 in., 28 mil steel framing, a max. of 16 in. on center.

- 4. INSULATION:** Mineral wool insulation (ASTM C665 Type II) in stud cavities.

- 5. INTERIOR SHEATHING:** 5/8 in. Type X gypsum board meeting ASTM C1396, vertical or horizontal, attached with #6 x 1-1/2 in. long, self-drilling drywall screws.

- 6. JOINTS AND FASTENER HEADS:** All interior and exterior gypsum board joints must be taped and treated with joint compound in accordance with ASTM C840. Fastener heads must be treated with joint compound in accordance with ASTM C840.

Consult the listing report on the Directory of Building Products (<https://bpdirectory.intertek.com>) for the edition of the standard(s) evaluated.

Compliance of the assembly described in this Design Listing with the referenced standard relies on verification that the assembly constructed in the field is consistent with that described herein. Intertek certified products may be verified by the approved Intertek label; other products must be verified by the Authority Having Jurisdiction as meeting the specifications stated herein.