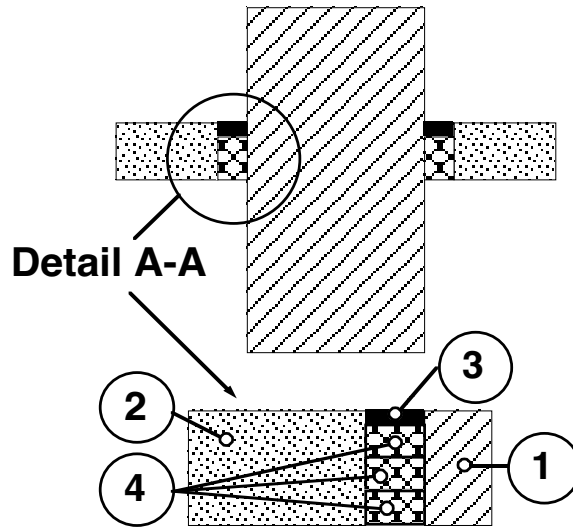


Design No. FS 587 F

FIRE PENETRATION SEAL (Grease Duct)

T-Rating – 2 hr

F-Rating – 2 hr



1. PENETRATING ITEM: 16 GA continuously-welded, airtight grease duct system, with both horizontal and vertical shafts permitted, constructed of sheet steel with outside dimensions of max. 49-in. wide x max. 49-in. high, and protected as detailed in Design GD 544 F, GD 545 F, or GD 546 F.
2. FLOOR/CEILING ASSEMBLY: The two-hour fire-rated floor/ceiling assembly shall consist of min. 4-1/2 in. thick normal weight (100-150 pcf) reinforced concrete. The maximum dimension of the opening is 57" x 57". The duct assembly is positioned eccentrically in the opening so that the range of the annular space is 1/2 in. to 4-3/4 in.
3. FILL, VOID OR CAVITY MATERIAL: Min. 1/4-in. depth of sealant fill material is to be applied to the recess around the top surface of the floor through-penetration opening.

Listed Manufacturer:

Thermal Ceramics, Inc.--

Firestopping

Firestopping Sealant

Fyre-Sil® or Fyre-Sil S/L Sealant

4. PACKING MATERIAL: Fill the annular space with leftover 1-1/2 in. thick, 6pcf ceramic fiber blanket. Cut the blanket into 4-1/4 in. strips and compress it approximately 50% and insert it into the opening to fill the entire annular space. Recess the surface of packing material a min. 1/4 in. from the top surface of the floor, as required to accommodate the necessary depth of caulk fill material.

Listed Manufacturer:

Thermal Ceramics Inc. --

Applied Fireproofing

Mineral Fiber Firestopping

FireMaster® FastWrap+®