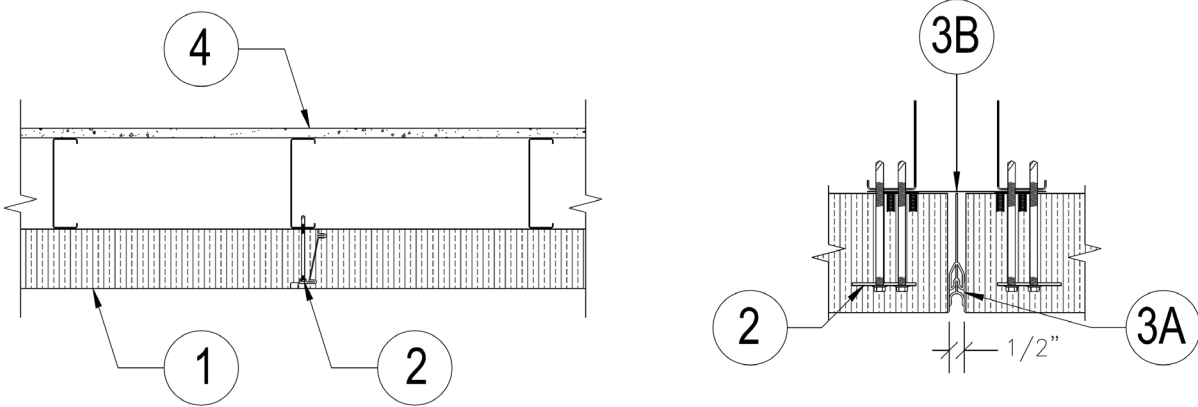


**Kingspan Insulated Panels, Inc.**  
**Design No. KIP/IMWP 30-02**  
**Insulated Metal Wall Panels**  
**DESIGNWALL 4000**  
**NFPA 285**  
**Rating: Meets Conditions of Acceptance**



**Butt Joint Detail**

**1. CERTIFIED MANUFACTURER:** Kingspan Insulated Panels, Inc.

**CERTIFIED PRODUCT:** Insulated Metal Wall Panels

**CERTIFIED MODEL:** DESIGNWALL 4000

PANELS – Horizontally or vertically oriented, max. 36 in. wide x max. 4 in. thick, insulated metal panels installed to the exterior side of steel framing. Panel facings are min. 22 GA exterior and min. 24 GA interior side, galvanized or galvalume steel. The panel core is polyisocyanurate rigid foam, or Kingspan’s alternate Quadcore.

**2. FASTENERS:** Panels are attached to each steel framing member, using manufacturer’s 14 GA stainless steel, 3 hole-clip with PVC backer, spaced at 16 in. on center (oc), and two 1/4-14 HWH Tek 3 zinc coated self-drilling screws per clip.

**3. JOINTS AND SEAMS:** Vertical butt joints, used with horizontally installed panel, must be sealed with VJ-4F extruded flame-retardant gasket (supplied by Kingspan) (Item 3A), inserted between panels. The panels have "trimless ends" which fold the exterior face steel over the panel end for 7/8 in. A mending steel plate (Item 3B), min. 24 GA x 6 in. wide, continuous over the interior side of the joint is required. Panel ends are attached in typical fashion using 14 GA stainless steel, 3 hole-clip with PVC backer, and two 1/4-14 HWH zinc coated Tek 3 self-drilling screws applied at the top of the panel on both sides of the vertical butt joint, while the bottom side is engaged to the preceding panel. The vertical gap between "trimless ends" of consecutive panels is nominally 1/2 in. wide.

Panel edge tongue-and-groove joints must be sealed with manufacturer-supplied multi-fin or wedge thermoplastic extruded rubber gaskets or liquid butyl sealant.



4. **GYPSUM BOARD (Optional):** Install min. 1/2 in. thick gypsum board to the interior side of the steel framing using 1-1/4 in. wafer-head corrosion resistant screws, spaced at 8 in. oc around the wall perimeter and 12 in. oc within the gypsum board field.
5. **FLASHING (Not Shown):** The inside perimeter of openings in the wall assembly (cutouts) shall be continuously enclosed with 26 GA C-shaped steel flashing.
6. **FLOORLINE FIREBLOCKING (Not Shown):** Min. 4 pcf mineral wool in each stud cavity and at each floorline, attached with Z-clips or equivalent.

Consult the listing report on the Directory of Building Products (<https://bpdirectory.intertek.com>) for the edition of the standard(s) evaluated.

*Compliance of the assembly described in this Design Listing with the referenced standard relies on verification that the assembly constructed in the field is consistent with that described herein. Intertek certified products may be verified by the approved Intertek label; other products must be verified by the Authority Having Jurisdiction as meeting the specifications stated herein.*