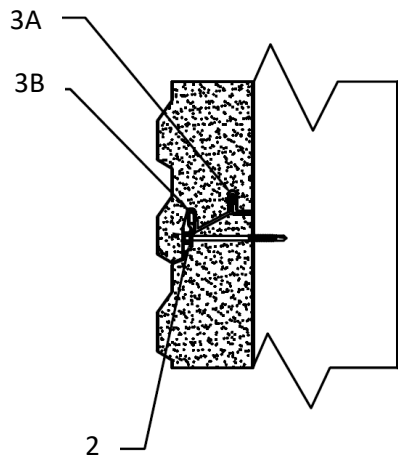
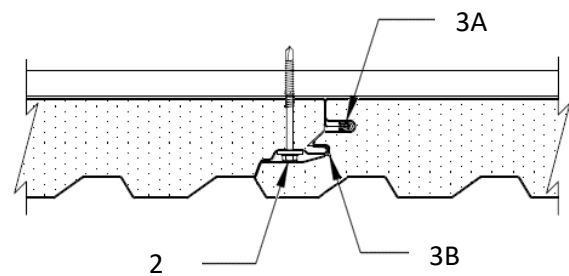


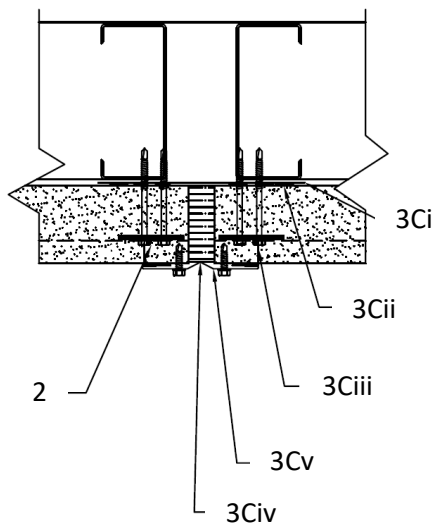
Kingspan Insulated Panels, Inc.
Design No. KIP/IMWP 30-09
Insulated Metal Wall Panels
VALE
NFPA 285
Rating: Meets Conditions of Acceptance



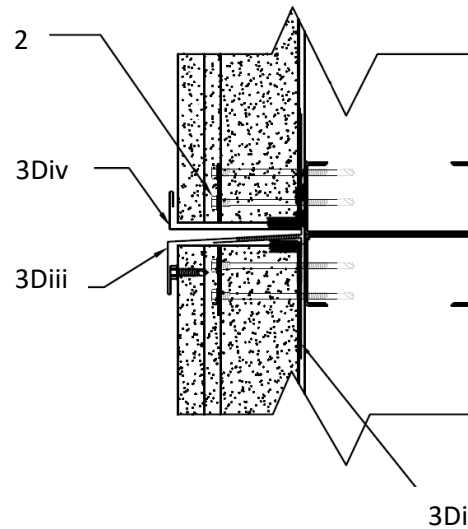
Standard Panel Joint (Horizontal)



Standard Panel Joint (Vertical)



Butt Joint (Horizontal)



Stack Joint (Vertical)



1. COMPONENT NAME: Insulated Metal Wall Panel

CERTIFIED PRODUCT: Kingspan Insulated Panels, Inc. – Vale

Attach 36 in. wide, 3 in. or 4 in. thick Vale panels oriented horizontally or vertically to the exterior side of steel framing. Vale panels use Kingspan’s proprietary polyisocyanurate (PIR) foamed-in-place core with 24 GA interior and 22 GA exterior galvanized, galvalume, or Zalmag coated steel facings.

2. FASTENERS AND CLIPS: Fix panels to steel framing using 1/4 in. diameter Hex Washer Head (HWH) self-drilling sheet metal fasteners and manufacturer-supplied 12 GA stainless steel, 2 hole-clips. Use appropriate length fasteners based on the thickness of the panel. Space clips 6 ft. on center (oc) when installing panels oriented vertically, or 4 ft. 3 in. oc when installing panels oriented horizontally. Use two fasteners per clip.

3. JOINTS AND SEAMS: Construct joints and seams as follows:

- A. FINNED GASKET – Install manufacturer-supplied finned gaskets in the interior panel-to-panel joints.
- B. BUTYL SEALANT (Optional) – Apply a bead of butyl sealant in the exterior panel-to-panel joints.
- C. BUTT JOINT – When panels are installed horizontally and vertical joints are required, install the following:
 - i. MENDING PLATE: Install 6 in. × 22 GA steel mending plates over the studs.
 - ii. BUTYL SEALANT: Apply a bead of butyl sealant over each steel mending plate. Set the panels into the butyl sealant before fixing the panels to the steel framing.

iii. RIBBED METAL CLOSURE: Fix ribbed metal closure to the panels using 3/16 in. steel pop rivets spaced max. 8 in. oc.

iv. MINERAL FIBER STRIP: Install 4 in. × 1-1/4 in., min. 4 pcf noncombustible mineral fiber strips, complying with ASTM E136, in the vertical butt joint.

v. VERTICAL CAP TRIM: Attach 4-1/2 in. wide vertical cap trim over the joint using #10 × 3 in. long metal to metal stitching screws or 3/16 in. steel pop rivets spaced 8 in. oc.

D. STACK JOINT – When panels are installed vertically and horizontal joints are required, install the following:

i. CAP TRIM: Install 3 in. × 4 in. × 22 GA cap trim over the studs.

ii. BUTYL SEALANT (Not Shown): Apply a bead of butyl sealant over the cap trim. Set the panels into the butyl sealant before fixing the panels to the steel framing.

iii. “Z” STACK TRIM: Fix Z-trim using #10 × 3/4 in. HWH self-drilling sheet metal fasteners spaced 12 in. oc to the lower panel.

iv. “J” STACK TRIM: Fix J-trim using #10 × 3/4 in. HWH self-drilling sheet metal fasteners spaced 12 in. oc over the Z-trim.

4. WINDOW FLASHING (Not Shown): Install 6 in. × 3 in. × 24 GA galvanized steel trim to the exterior and interior surfaces of the assembly using #10 × 3/4 in. long metal to metal stitching screws spaced 12 in. oc. When the panels are oriented horizontally, use 22 GA galvanized steel trim, and install min. 1/2 in. thick gypsum board on the inside perimeter of the window opening prior to installing the window flashing.

5. FLOORLINE FIREBLOCKING (Not Shown): Install min. 4 pcf mineral wool at each floorline using Z-clips or equivalent.



Consult the listing report on the Directory of Building Products (<https://bpdirectory.intertek.com>) for the edition of the standard(s) evaluated.

Compliance of the assembly described in this Design Listing with the referenced standard relies on verification that the assembly constructed in the field is consistent with that described herein. Intertek certified products may be verified by the approved Intertek label; other products must be verified by the Authority Having Jurisdiction as meeting the specifications stated herein.