

Design Number TFI/BPF 120-01
PERIMETER FIRE BARRIERS

Thermafiber, Inc.

FireSpan® 90 and FireSpan® 40 and Safing™

ASTM E 2307

T-Rating Refer to Compression Percentage

F-Rating 2 hr

ASTM E 2307/ASTM E 1399 Cycling: Class IV

Rated for ± 16.7% horizontal movement @ 50% Compression (Reference Item 3A): T-Rating 1/4 hr

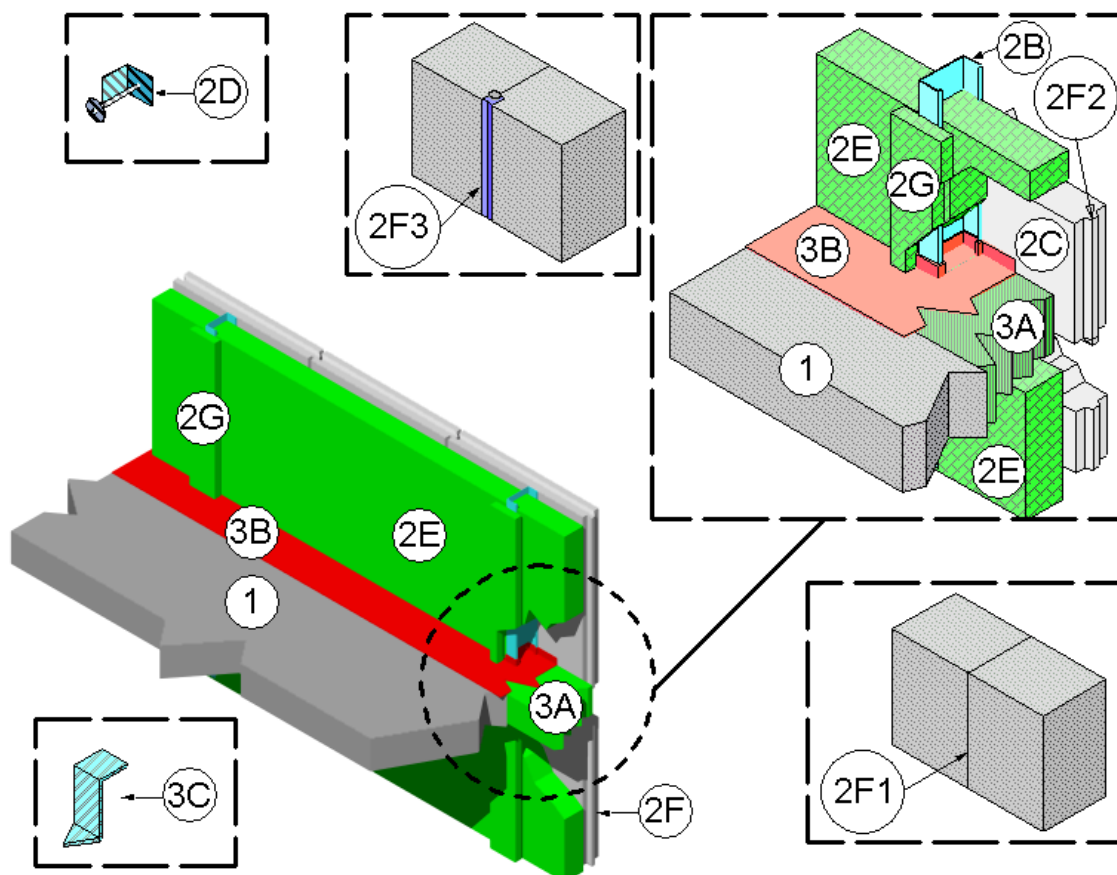
Rated for ± 11% horizontal movement @ 33% Compression (Reference Item 3A): T-Rating 0 hr

Rated for ± 5% horizontal movement @ 20% Compression (Reference Item 3A): T-Rating 0 hr

Rated for ± 6.25% vertical shear movement @ 50% Compression (Reference Item 3A): T-Rating 0 hr

UL 2079

L-Rating ambient and elevated (400°F): <1.0 SCFM/LF



1. CONCRETE FLOOR ASSEMBLY: Two-hour rated concrete floor assembly made from either lightweight or normal weight concrete with a density of 100 to 150 pcf, having a minimum thickness of 4-1/2 in. at the joint face. When a longitudinal recess (blockout) is required to contain an architectural joint system, increase concrete floor assembly

thickness to maintain a minimum thickness of 4-1/2 in. and accommodate depth of blockout formed in the concrete: blockout width unrestricted.

2. CURTAIN WALL ASSEMBLY: Incorporate the following construction features:

Division 07 Thermal Protection

07-84-00 Firestopping

07-84-53 Building Perimeter Firestopping

Page 2 of 4

- A. Mounting Attachment: (Not shown) Attach steel stud framing (Item 2B) to the structural framing according to the curtain wall manufacturer's instructions. When required, connect the mounting attachments to the joint face of the concrete floor assembly (Item 1) according to the curtain wall manufacturer's instructions. Limit distance between mounting attachments to maximum 120 in. on center (oc).
- B. Steel Stud Framing: Use minimum 3-5/8 in. by 1-5/8 in., 18 gauge (GA), C-shaped steel studs as interior vertical framing spaced maximum 48 in. oc. When required, install horizontal steel stud framing members according to the curtain wall system manufacturer's guidelines and, in the spandrel area, locate a minimum of 33 in. above the top surface of the concrete floor assembly (Item 1).
- C. Concrete Panels: Use any non-combustible exterior concrete based panels. Use minimum 1-1/2 in. thick, 12 in. high, 12 in. long panels. Attach concrete panels to steel stud framing (Item 2B) according to the curtain wall system manufacturer's requirements.
- D. Impaling Pins: (Optional) Install minimum 12 GA steel pins sized to extend minimum 1/2 in. through the framing covers (Item 2G). Attach pins using a 2 in. x 2 in. steel plate, 2 in. x 2 in. steel angle or directly attached to the steel stud framing (Item 2B) using a stud gun. Space pins maximum 12 in. oc.
- E. CERTIFIED COMPANY:
Thermafiber, Inc.

CERTIFIED PRODUCT: Insulation
Mineral Wool

MODEL: Thermafiber, Inc.
FireSpan® 90 and FireSpan® 40

Curtain Wall Insulation: Use nominal 24 in. wide, 4 in. thick, 4 pcf density or 2 in. thick, 8 pcf density, mineral wool batt insulation. Install curtain wall insulation by fitting in each stud cavity between steel stud framing (Item 2B) using a curtain wall insulation width at least 1/4 in. longer than the distance between steel stud framing (Item 2B) and friction fitting the insulation between the steel stud framing (Item 2B). Maintain 1-1/4 in. air cavity between curtain wall insulation and glass panels (Item 2C). Completely fill the recess of the C-shaped steel stud framing (Item 2B) with curtain wall insulation. Tightly compress together butt joints in the lengths of curtain wall insulation by using minimum 1/4 in. compression per piece of curtain wall insulation material. Locate horizontal seams in the curtain wall insulation at least 6 in. from the top surface of the perimeter joint protection (Item 3).

- F. Concrete Panel Joint: No through joints allowed. When required, the surface of the concrete panel joints can be sealed with gaskets or sealants. Use one of the following for vertical and horizontal concrete panel joints:
 - I. flush type (butt joint) (Item 2F1),
 - II. key way type (tongue and groove) (Item 2F2), or
 - III. recessed (Item 2F3).
- G. CERTIFIED COMPANY:
Thermafiber, Inc.

CERTIFIED PRODUCT: Insulation
Mineral Wool

MODEL: Thermafiber, Inc.
FireSpan® 90

Framing Covers: (Optional) When used, install minimum 1 in. thick FireSpan® 90 framing covers minimum 1-1/2 in. wider than the steel stud framing (Item 2B). Do not pass framing covers through the perimeter joint protection (Item 3).

Division 07 Thermal Protection

07-84-00 Firestopping

07-84-53 Building Perimeter Firestopping

Allow framing covers to abut top and bottom surfaces of the perimeter joint protection (Item 3) provided that no deformation occurs.

- H. Glass Vision Panels: (Optional)
When used, locate glass vision panels above spandrel area and a minimum 33 in. above the top surface of the concrete floor assembly (Item 1). Install glass vision panels to window framing (Item 2I) according to manufacturer's guidelines. Use a minimum 1/4 in. thick, clear tempered glass with maximum width and height as determined by the window framing (Item 2I).
- I. Window Gaskets: When glass vision panels (Item 2G) used, use a thermal break (thermo-set rubber extrusion) to secure glass vision panels (Item 2G).
- J. Window Framing: When glass vision panels used, use steel framing members a minimum 3-5/8 in. by 1-5/8 in., 18 GA steel, U-shaped channel or similar construction compatible with structural framing (Item 2B). Locate window framing at least 33 in. above the top surface of the concrete floor assembly (Item 1).

- 3. PERIMETER JOINT PROTECTION: Do not exceed an 8 in. nominal joint width (joint width at installation). Incorporate the following construction features for the perimeter joint protection (also known as perimeter fire barrier system):

- A. CERTIFIED COMPANY:
Thermafiber, Inc.

CERTIFIED PRODUCT: Insulation
Mineral Wool

MODEL: Thermafiber, Inc. Safing
TM

Packing Material: Use a minimum 4 in. thick, 4 pcf density, mineral wool batt insulation installed with the

Page 3 of 4

fibers running parallel to the edge of concrete floor assembly (Item 1) and curtain wall assembly (Item 2). Cut packing material width to achieve required compression, refer below, when installed in the nominal joint width. Compress the packing material into the perimeter joint. Tightly compress together splices (butt joints) in the lengths of packing material by using minimum 1/4 in. compression per piece of packing material. When a spray coating is used, locate the top surface of the packing material flush with the top surface of the concrete floor assembly (Item 1). When the non-sag or self leveling silicone sealant is used, recess the top surface of the packing material 1/4 in. from the top surface of the concrete floor assembly (Item 1).

- I. When 50% compression is required cut the width of the packing material 2 times wider than the nominal joint width.
 - II. When 33% compression is required cut the width of the packing material 1.5 times wider than the nominal joint width.
 - III. When 20% compression is required cut the width of the packing material 1.25 times wider than the nominal joint width.
- B. Fill, Void or Cavity Material: Apply 3M FireDam™ Spray 200 (Elastomeric, Sprayable) or Fire Barrier™ 1000 N/S Silicone Sealant (Non-sag) or FB 1003 S/L (Self Leveling) Sealant (bearing the Intertek Certification Mark) over the packing material (Item 3A) as follows:

Spray Coating – Spray apply the liquid to cover the exposed top surface of the packing material (Item 3A) compressed and installed in the perimeter joint. Apply a minimum wet film thickness of 1/8 in. and overlap the spray coating a minimum 1/2 in. onto the adjacent curtain wall assembly (Item 2) and

Division 07 Thermal Protection

07-84-00 Firestopping

07-84-53 Building Perimeter Firestopping

Page 4 of 4

concrete floor assembly (Item 1). When the spraying process is stopped and the applied spray coating cures to an elastomeric film before installation process is restarted, then overlap the edge of the cured spray coating at least 1/8 in. with the liquid spray coating.

Sealant – Apply non-sag or self leveling sealant to cover the exposed surface of the packing material (Item 3A) compressed and installed in the perimeter joint. Apply minimum 1/4 in. thickness non-sag or self leveling sealant over the packing material (Item 3A) and finish flush with the top surface of the concrete floor assembly (Item 1).

- C. Support Clips: (Optional)
Recommended for installations subject to vertical shear movement. Use standard 20 GA galvanized steel Z-shaped clips having the following nominal dimensions: 1 in. wide by 3 in. high with a 2 in. upper leg and a 3 in. lower leg. Install 3 in. horizontal leg impaled into packing material (Item 3A) mid-depth and the 2 in. horizontal leg on top of the concrete floor assembly (Item 1). Install clips adjacent to mounting bracket (Item 2A) and spaced maximum 12 in. oc.