

Design Number TFI/BPF 120-10
PERIMETER FIRE BARRIERS

Thermafiber, Inc.

FireSpan® 90 and FireSpan® 40 and Safing™

ASTM E 2307

T-Rating Refer to Compression Percentage

F-Rating 2 hr

ASTM E 2307/ASTM E 1399 Cycling

Class IV: 500 cycles @ 30 cpm

Rated for ± 16.7% horizontal movement @ 50% Compression (Reference Item 3A): T-Rating 1/4 hr

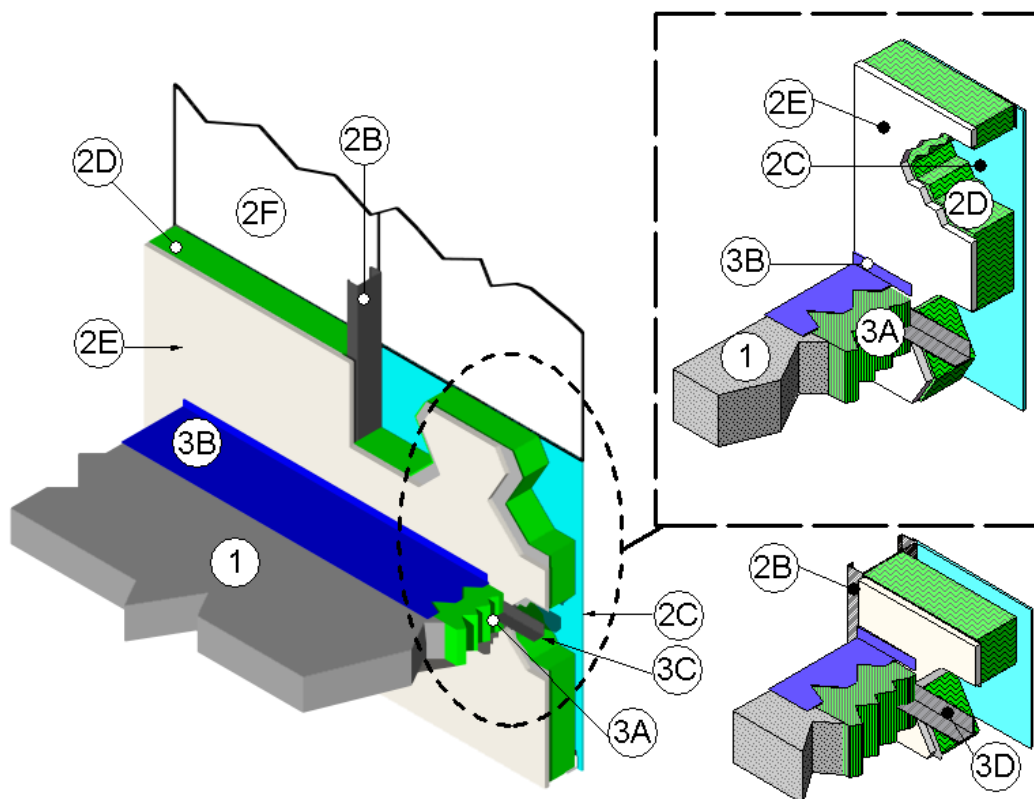
Rated for ± 11% horizontal movement @ 33% Compression (Reference Item 3A): T-Rating 0 hr

Rated for ± 5% horizontal movement @ 20% Compression (Reference Item 3A): T-Rating 0 hr

Rated for ± 6.25% vertical shear movement @ 50% Compression (Reference Item 3A): T-Rating 0 hr

UL 2079

L-Rating ambient and elevated (400°F): <1.0 SCFM/LF



1. CONCRETE FLOOR ASSEMBLY: Two hour rated concrete floor assembly made from either lightweight or normal weight concrete with a density of 100 to 150 pcf, having a minimum thickness of 4-1/2 in. at the joint face. When a longitudinal recess (blockout) is required to contain an architectural joint

system, increase concrete floor assembly thickness to maintain a minimum thickness of 4-1/2 in. and accommodate depth of blockout formed in the concrete: blockout width unrestricted.

2. CURTAIN WALL ASSEMBLY: Incorporate the following construction features:

A. Mounting Attachment: (Not shown) Attach steel stud framing (Item 2B) to the structural framing according to the curtain wall manufacturer's instructions. When required, connect the mounting attachments to the joint face of the concrete floor assembly (Item 1) according to the curtain wall manufacturer's instructions. Limit distance between mounting attachments to maximum 120 in. on center (oc).

B. Steel Stud Framing: Use minimum 3-5/8 in. by 1-5/8 in., 18 gauge (GA), C-shaped steel studs as vertical framing. Limit distance between vertical steel stud framing to maximum 48 in. oc. When required, install horizontal structural framing members. Limit distance between horizontal steel stud framing to maximum 72 in. oc. In the spandrel area, locate the horizontal framing members minimum 33 in. above the top surface of the concrete floor assembly (Item 1).

C. Steel Panels: Install steel panels to curtain wall framing according to the curtain wall system manufacturer's guidelines. Use a minimum 20 GA sheet steel panel with maximum dimensions of 48 in. wide x 144 in. high.

D. CERTIFIED COMPANY:
Thermafiber, Inc.

CERTIFIED PRODUCT:
Insulation Mineral Wool

MODEL: Thermafiber, Inc.
FireSpan® 90 and FireSpan® 40

Curtain Wall Insulation (Optional): Use nominal 24 in. wide, 4 in. thick, 4 pcf density or 2 in. thick, 8 pcf density, mineral wool batt insulation. Install curtain wall insulation friction fit in each stud cavity between steel stud framing (Item 2B). Friction fit by using a curtain wall insulation lengths at least 1/4 in. longer than the distance between steel stud framing (Item 2B). Completely fill the recess of the C-shaped steel stud framing (Item 2B) with curtain wall insulation. Tightly compress together butt joints in the lengths of curtain wall insulation by using minimum 1/4 in. compression per piece of curtain wall insulation material. Tape all adjacent edges between curtain wall insulation, or between steel stud framing (Item 2B) and curtain wall insulation, with minimum 4 in. wide pressure sensitive aluminum foil tape, centered over the seam. Locate horizontal seams in the curtain wall insulation at least 6 in. above or below the top surface of the perimeter joint protection (Item 3).

E. Interior Curtain Wall Surface: Continuously cover interior face of steel stud framing (Item 2B) with one layer of 5/8 in. thick, Type X gypsum board. Fasten gypsum board to steel stud framing (Item 2B) using minimum #6 1-1/8 in. long bugle-head phillips drywall screws spaced nominally 12 in. oc. Joint Tape and Compound – Apply vinyl or casein, dry or premixed joint compound to exposed face of gypsum board in two coats to all exposed screw heads and gypsum board joints. Embed minimum 2 in. wide paper, plastic, or fiberglass tape in first layer of premixed joint compound over joints in gypsum board. Create wall cavity between unexposed face of gypsum board to unexposed face of steel panel (Item 2C).

F. Glass Vision Panels: When required, use optional glass vision panels a minimum 33 in. above the

Division 07 Thermal Protection
07-84-00 Firestopping
07-84-53 Building Perimeter Firestopping

Page 3 of 4

top surface of the floor assembly (Item 1). Install glass vision panels to curtain wall framing according to the curtain wall system manufacturer's guidelines. Use a minimum 1/4 in. thick, clear tempered glass with a nominal width and height as determined by the framing.

- G. Window Gaskets: (Not shown) When optional glass vision panels used, secure glass vision panels with a thermal break (thermal-set rubber extrusion).
- H. Window Framing: When glass vision panels used, use steel framing members a minimum 3-5/8 in. by 1-5/8 in., 18 GA steel, U-shaped channel or similar construction compatible with structural framing (Item 2B). Locate window framing at least 33 in. above the top surface of the concrete floor assembly (Item 1).

3. PERIMETER JOINT PROTECTION: Do not exceed an 8 in. nominal joint width (joint width at installation). Incorporate the following construction features for the perimeter joint protection (also known as perimeter fire barrier system):

A. CERTIFIED COMPANY: Thermafiber, Inc.

CERTIFIED PRODUCT: Insulation Mineral Wool

MODEL: Thermafiber, Inc. Safing™

Packing Material: Install reinforcing angle (Item 3C). Use a minimum 4 in. thick, 4 pcf density, mineral wool batt insulation installed with the fibers running parallel to the

edge of concrete floor assembly (Item 1) and curtain wall assembly (Item 2). Cut packing material width to achieve required compression, refer below, when installed in the nominal joint width. Compress the packing material into the perimeter joint. Tightly compress together splices (butt joints) in the lengths of packing material by using minimum 1/4 in. compression per piece of packing material. When a spray coating is used, locate the top surface of the packing material flush with the top surface of the concrete floor assembly (Item 1). When the non-sag or self leveling silicone sealant is used, recess the top surface of the packing material 1/4 in. from the top surface of the concrete floor assembly (Item 1).

- I. When 50% compression is required cut the width of the packing material 2 times wider than the nominal joint width.
- II. When 33% compression is required cut the width of the packing material 1.5 times wider than the nominal joint width.
- III. When 20% compression is required cut the width of the packing material 1.25 times wider than the nominal joint width.
- B. Fill, Void or Cavity Material: Apply 3M FireDam™ Spray 200 (Elastomeric, Sprayable) or Fire Barrier™ 1000 N/S Silicone Sealant (Non-sag) or FB 1003 S/L (Self Leveling) Sealant (bearing the Intertek Certification Mark) over the packing material (Item 3A) as follows:

Spray Coating – Spray apply the liquid to cover the exposed top surface of the packing material (Item 3A) compressed and installed in the perimeter joint. Apply a minimum wet film thickness of 1/8 in. and overlap the spray coating a minimum 1/2 in. onto the adjacent

Division 07 Thermal Protection
07-84-00 Firestopping
07-84-53 Building Perimeter Firestopping

Page 4 of 4

curtain wall assembly (Item 2) and concrete floor assembly (Item 1). When the spraying process is stopped and the applied spray coating cures to an elastomeric film before installation process is restarted, then overlap the edge of the cured spray coating at least 1/8 in. with the liquid spray coating.

Sealant – Apply non-sag or self leveling sealant to cover the exposed surface of the packing material (Item 3A) compressed and installed in the perimeter joint. Apply minimum 1/4 in. thickness non-sag or self leveling sealant over the packing material (Item 3A) and finish flush with the top surface of the concrete floor assembly (Item 1).

- C. Reinforcing Angle: Position reinforcing angle against interior curtain wall surface (Item 2I) and mechanically attach with minimum #8, 1-1/2 in. long screws at each vertical steel stud framing (Item 2B), install a nominal 1-1/2 by 1-1/2 in., 20 GA, steel angle at mid depth of the packing material (Item 3A) and running perpendicular to the vertical steel stud framing (Item 2B).