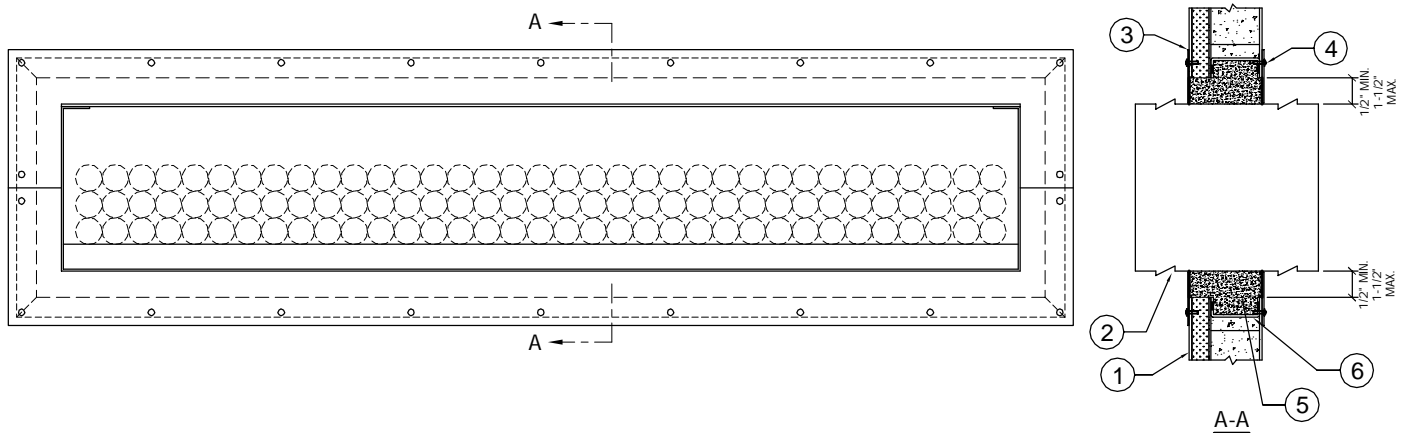


Trussbilt Manufacturing Through Penetration Firestop System

Detail No. P2-5

Investigated by Intertek for compliance with ASTM E814. For use with Trussbilt's Fire Rated Wall Panel System TBM/MWP 60-01 or TBM/MWP 120-01. For use with load bearing and non-load bearing wall installations.



1. Trussbilt fire rated wall panel TBM/MWP 60-01 (1 hour rating) or TBM/MWP 120-1 (2 hour rating)
2. Steel Cable Tray, 6-9/32" x 36" maximum size.
3. Minimum 18 gauge steel cover plate with 1" minimum engagement on wall panel.
4. Minimum #8 sheet metal screw, powder actuated fastener or welded connection, maximum 6" o.c.
5. Hilti CFS-BL Fire Stop Block.
6. Minimum 12 gauge steel channel.