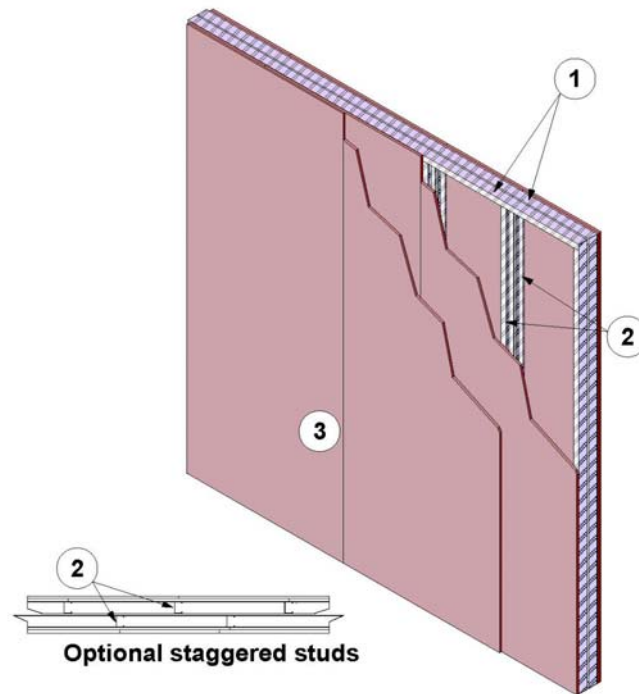


---

Knauf, LLC  
Design Number KL/GBF 120-05  
Non-Load Bearing Wall Assembly  
Knauf Fire Resistant Gypsum Board  
ASTM E119  
Fire Resistance Rating: 2 hr

---



1. CERTIFIED COMPANY: Knauf, LLC.

CERTIFIED PRODUCT: Steel framing member

MODEL: UW 64/25/0.9/3200

STEEL TRACK: Install two rows of min. 2-1/2 in. (65mm) deep, 20 GA (1mm) Knauf UW shallow galvanized track to the existing floor, ceiling or wall assemblies using appropriate fasteners for the existing construction. Space the two rows of tracks a min. 0.4 in. (10mm) apart.

2. CERTIFIED COMPANY: Knauf, LLC.

CERTIFIED PRODUCT: Steel framing member

MODEL: CW 64/33/0.9/3000

STEEL STUDS: Friction fit two rows of min. 2-1/2 in. (64mm) deep, 20 GA (1mm) Knauf CW galvanized steel studs into top and bottom steel tracks (Item 1) spaced max. 24 in. (610mm) on center (oc). Studs cut to be nominal 3mm shorter than the wall height. Studs can be installed inline or offset.

3. CERTIFIED COMPANY: Knauf, LLC.

CERTIFIED PRODUCT: Type X Gypsum Board

MODEL: Knauf GW-TX

GYP SUM BOARD: Install two layers of 1/2 in. (12.7mm) Knauf GW-TX Type X gypsum

board to the face steel studs (Item 2) to each side of the wall. Install base layers with the long edge vertical and joints offset min. 12 in. (305mm) on opposing sides of the wall. Install gypsum board using Knauf Self-Drilling TN 3.5x25 screws spaced 12 in. (305mm) oc. Install face layers with the long edge vertical and joints offset min. 12 in. (305mm) from face layers. Install gypsum board using Knauf Self-Drilling TN 3.5x45 screws spaced 12 in. (305mm) oc. Attach gypsum board to steel studs only. Gypsum board not attached to steel track (Item 1).

4. CERTIFIED COMPANY: Knauf, LLC.

CERTIFIED PRODUCT: Joint Compound

MODEL: Readygips Multi-Purpose Joint Compound

JOINT TAPE AND COMPOUND – (Not Shown) Apply a level 2 finish of self-adhering Knauf Joint Tape and Knauf Readygips multi-purpose joint compound: Apply tape to face layer of gypsum board (Item 3) at all gypsum board joints. Apply joint compound in two coats to all exposed fastener heads and gypsum board joints.