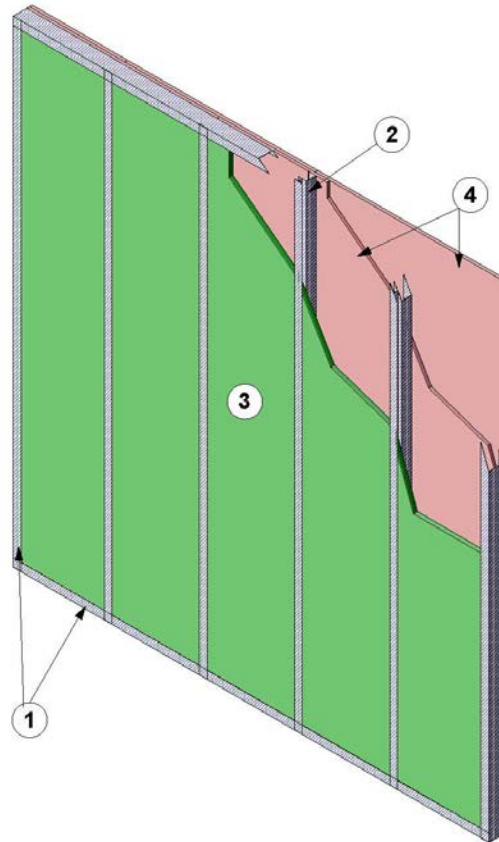

Knauf, LLC
Design Number KL/GBF 120-02
Non-Load Bearing Wall Assembly
Knauf DH-H1 Type X Gypsum Shaftliner
Knauf Fire Resistant Gypsum Board
ASTM E119
Fire Resistance Rating: 2 hr



1. **STEEL TRACK:** Install minimum 2-1/2 in. (65mm) deep, 20 GA (1mm) Knauf "J" Channel galvanized track to the existing floor, ceiling or wall assemblies using appropriate fasteners for the existing construction.
 - A. As an optional installation, a head of wall joint may be installed at the top of the wall assembly as an alternative to the top steel track (Item 1). Please refer to Intertek Design Number KL/GBF 120-03 For head of wall joint construction.

2. **STEEL STUDS:** Friction fit minimum 2-1/2 in. (65mm) deep, 20 GA (1mm) Knauf "CT" Stud, galvanized steel stud into top and bottom steel track (Item 1) spaced maximum 24 in. on center (oc).

3. **CERTIFIED COMPANY:** Knauf, LLC.

CERTIFIED PRODUCT: Type X Gypsum Board

MODEL: Knauf DH-H1

SHAFTLINER GYPSUM BOARD: Friction fit one layer of 1 in. (25.4mm)

thick Knauf DH-H1 Type X Gypsum Shaftliner. Cut Knauf DH-H1 Type X Gypsum Shaftliner so that the board is the nominal same width as the oc spacing of the steel studs (Item 2) with a maximum width of 24 in. Friction fit gypsum board into the "T"-shaped section of the steel studs (Item 2) and inside and against the long leg of the steel track (Item 1).

4. CERTIFIED COMPANY: Knauf, LLC.

CERTIFIED PRODUCT: Type X
Gypsum Board

MODEL: Knauf GW-TX

GYPSON BOARD: Install two layers of 5/8 in. (15.8mm) Knauf GW-TX Tyoe X gypsum board to the face of the "C"-shaped section of the steel studs (Item

2) and short leg of the bottom and side steel tracks (Item 1). Install base layer using #6 x 1 in. (24 x 3mm) Type S screws spaced 12 in. (305mm) oc. Install face layer using #6 x 1-1/2 in.(38 x 3.5mm) type S screws spaced 12 in. (305mm) oc.

5. JOINT TAPE AND COMPOUND – (Not Shown) Apply a level 2 finish of vinyl or casein, dry or premixed joint compound applied to the following elements: Apply to face layer of gypsum board (Item 4) in two coats to all exposed fastener heads and gypsum board joints. Embed minimum 2 in. wide paper, plastic, or fiberglass tape in first layer of compound over joints in gypsum board.