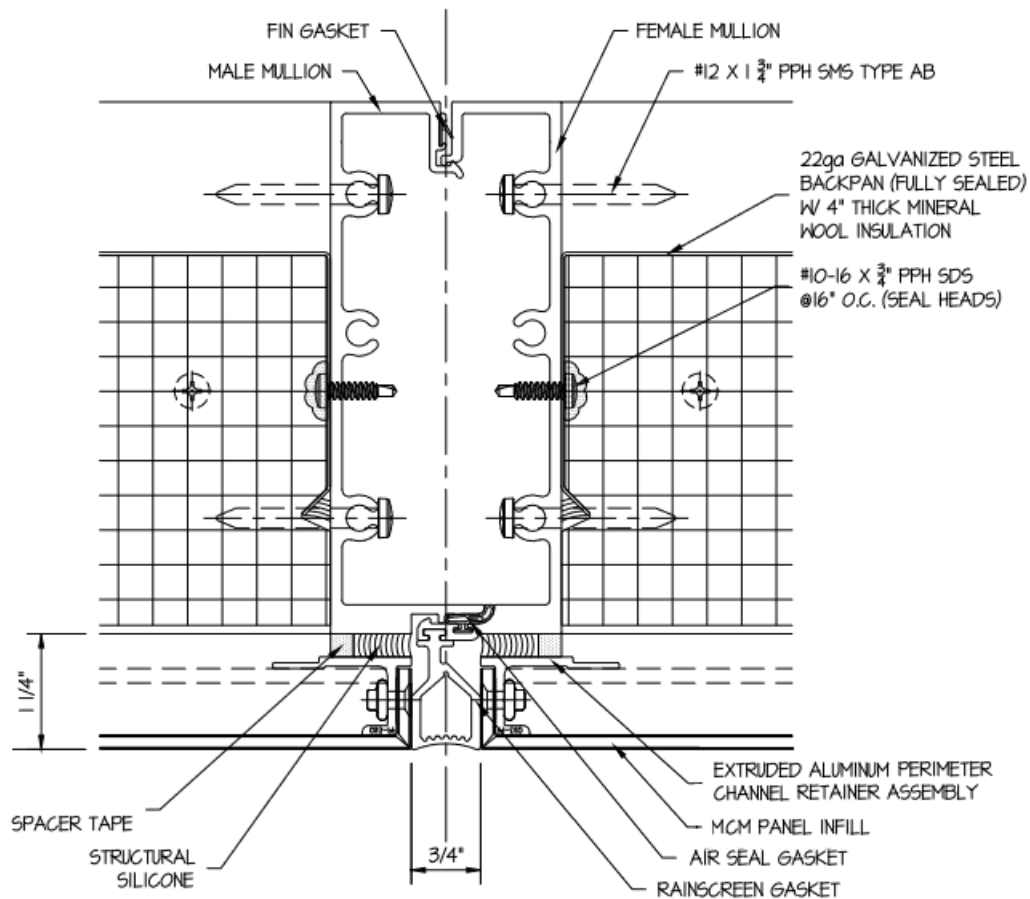
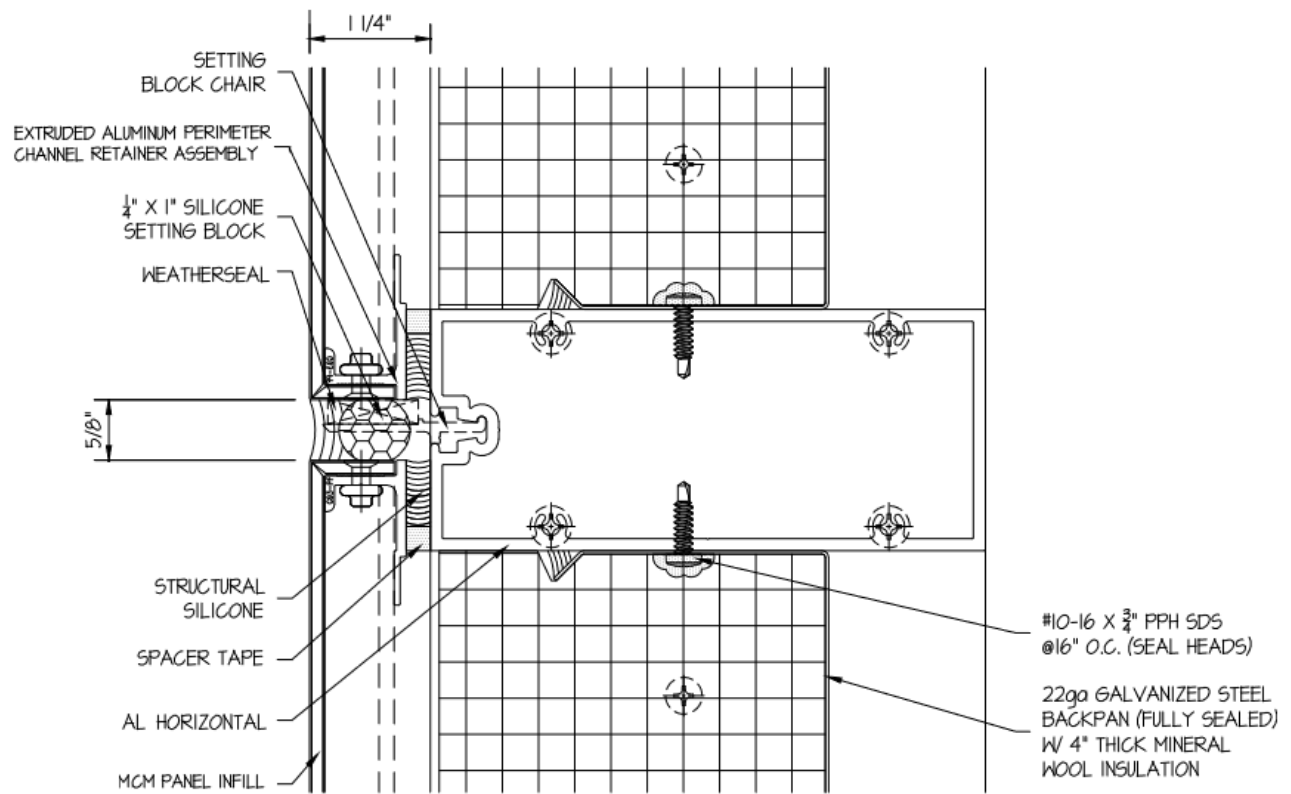


**Entek Group, Ltd  
EGL/MCMWP 30-01  
Exterior Wall Systems  
Talon Wall® MCM Curtain Wall System  
NFPA 285 - Pass**



**Figure 1. Talon Wall® Mullion Detail**



**Figure 2. Talon Wall® Transom Detail**

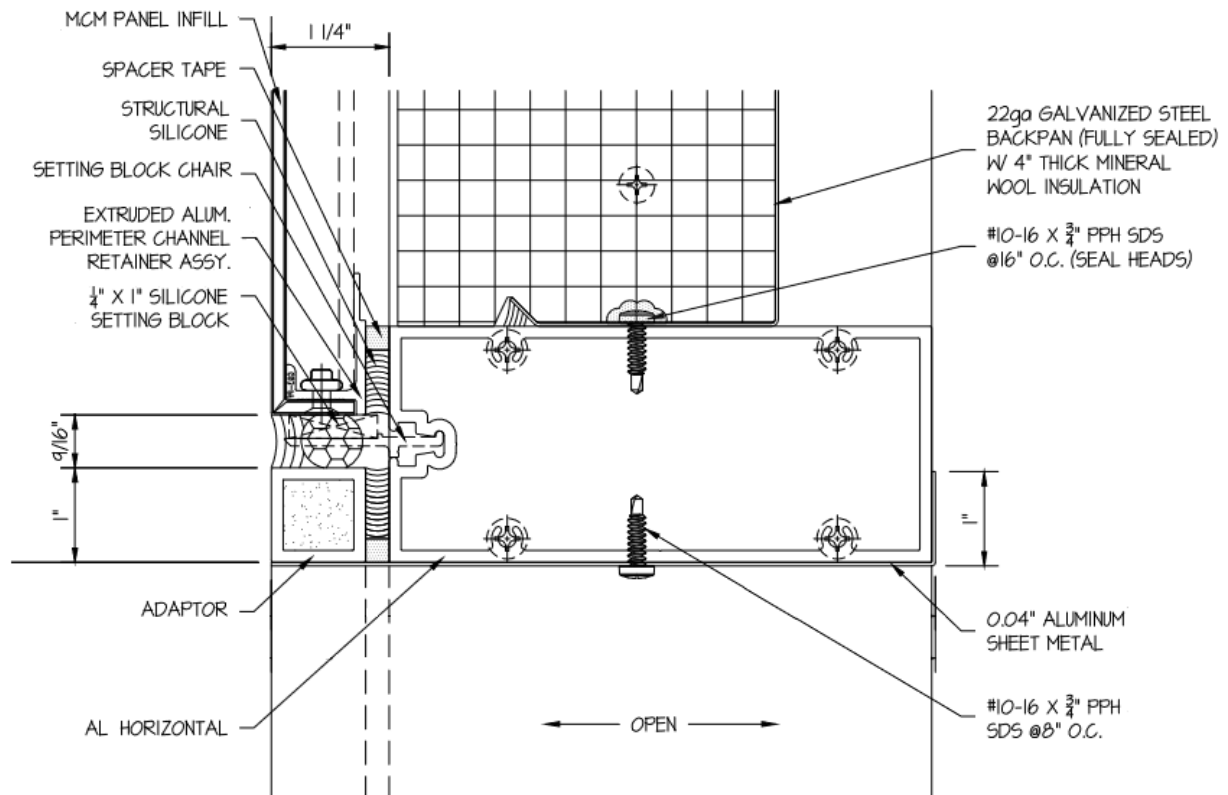


Figure 3. Talon Wall® Window Opening Perimeter Detail

#### 1. CURTAIN WALL ASSEMBLY:

**CERTIFIED PRODUCT:** Entekk Group, Ltd or Peerless Products, Inc. Talon Wall® MCM Curtain Wall System

Refer to Figures 1 through 3. Talon Wall® MCM Curtain Wall System is a unitized curtain wall system composed of prefabricated, aluminum-framed curtain wall sections with nominal 4-mm thick metal composite material (MCM) panel cladding. The following MCM panel products have been approved for use with this system:

- 3A Composites USA, Inc., Alucobond® Plus
- Sistemas Técnicos del Accesorio y Componentes, S.A., Stacbond® FR
- Mitsubishi Chemical America, Inc., Alpolic® FR
- Alucoil S.A.U., Larson® by Alucoil S.A.U.® FR
- Arconic Reynobond® FR

Follow the manufacturer's installation instructions to install the curtain wall assembly and anchor it to the supporting construction.



*Consult the listing report on the Directory of Building Products (<https://bpdirectory.intertek.com>) for the edition of the standard(s) evaluated.*

*Compliance of the assembly described in this Design Listing with the referenced standard relies on verification that the assembly constructed in the field is consistent with that described herein. Intertek certified products may be verified by the approved Intertek label; other products must be verified by the Authority Having Jurisdiction as meeting the specifications stated herein.*