

InPro Corporation
Design No. INC/EJCA 120-06
Wall Joint System
Fireline F140 (4 in. Series)
UL 2079, CAN/ULC S115-11
Rating: 2 Hour
ASTM E1399
Cycling – Class IV
50 % Movement

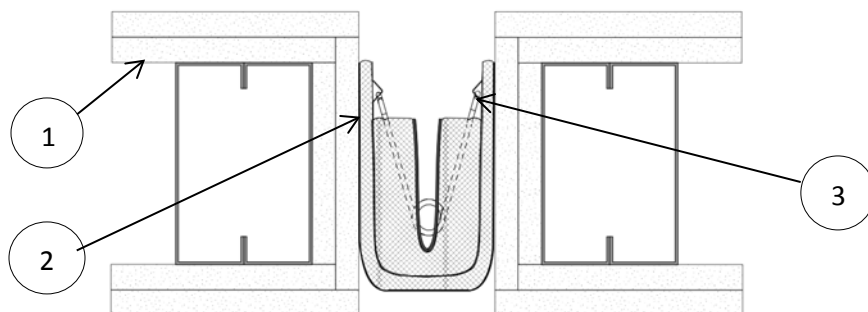


Figure 1

Design	Nominal Joint Size	Min. to Max. Opening
4 in.	3 to 4	1-1/2 to 6 in.

Table 1. Joint Size

- SUPPORTING CONSTRUCTION:** 2 hour rated gypsum wall assembly made from two layers of 5/8 in. thick gypsum board, fastened to minimum 25 GA steel studs or minimum 2x4 wood studs in accordance with the corresponding listed design. Install steel box studs or wood double studs on both sides of the joint. Gypsum board must be present in the throat of the joint as shown in Figure 1.
- WALL JOINT ASSEMBLY:** A 4 in. nominal joint width, pre-fabricated system composed of a rigid metallic architectural joint system and a flexible U-shaped fire barrier. Attach mechanical components to the gypsum wall assembly. Max. joint opening range is 6 in.

A. **CERTIFIED MANUFACTURER:** InPro Corporation

CERTIFIED PRODUCT: Fireline F140 Inside Mount Wall Joint System Series

CERTIFIED MODEL: F140-2IM-4WL; 4 in. nominal joint tested at max. opening of 6 in.

F140 Part Number Example/Explanation:

F140 (Brand/Product Name);
2 (Hourly Rating);
IM (Flange Type – Inside Mount);
4 (Nominal Joint Width);
WL (Condition – Wall to Wall)

The inside mount wall joint system is attached to the gypsum wall surface on each side of the joint opening in the wall



assembly with spring mechanism spaced nominally 18 in. on center (oc).

RESTRICTED FIRE EXPOSURE CONDITION:

The fire resistance rating only applies to fire exposure from the side opposite of the spring system Mounting (Item 3) and Cover Plate (Item 2B). This restriction does not apply to chase wall conditions (Item 2C).

- B. **COVER PLATE – (Not Shown)** Width of cover plate shall overlap the supporting construction (Item 1) a minimum of 3 in. at maximum joint width. Thickness of cover plate shall be not less than 1/8 in. thick for carbon steel or stainless steel; and, fastened on at least one side, 18 in. oc. with minimum #10 × 2-1/2 in. long truss-head screws.

- C. **CHASE WALL CONDITION (Not Shown):** In conditions where the linear opening is enclosed within a 2-hour fire resistance rated chase wall, as an alternate to the cover plate (Item 2B), use a joint cover consisting of 2 mil stainless steel foil secured to the supporting construction (Item 1) framing on both sides of the joint with minimum 1-in. wide, minimum 20 GA galvanized steel straps and minimum #10 × 2-1/2 in. long truss-head screws. spaced maximum 12 in. oc.

3. **MOUNTING:** Spring System, inside mount. No fasteners required.

ASTM E1399 Cycling:
Class IV Cycling at 50%