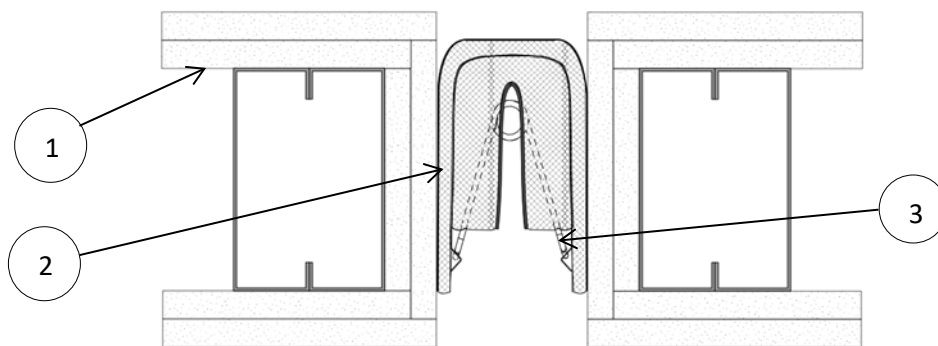


**InPro Corporation**  
**Design No. INC/EJCA 120-07**  
**Wall Joint System**  
**Fireline F140 Dual Sided (4 in. Series)**  
**UL 2079, CAN/ULC S115**  
**Rating: 2 Hour**  
**ASTM E1399**  
**Cycling – Class IV**  
**50% Movement**



**Figure 1.**

Design	Nominal Joint Size	Min. to Max. Opening
4 in. Dual Sided	2 to 4 in.	1 to 6 in.

**Table 1. Joint Size**

- 1. SUPPORTING CONSTRUCTION:** 2 hour rated gypsum wall assembly made from two layers of 5/8 in. thick gypsum board, fastened to minimum 25 GA steel studs or minimum 2x4 wood studs in accordance with the corresponding listed design. Install steel box studs or wood double studs on both sides of the joint. Gypsum board must be present in the throat of the joint as shown in Figure 1.
- 2. WALL JOINT SYSTEM:** A 4 in. nominal joint width, prefabricated system composed of a rigid metallic architectural joint system and a flexible U-shaped fire barrier. Attach mechanical components to the gypsum wall assembly. Joint opening range is 2 in. to 6 in.

- A. CERTIFIED MANUFACTURER:** InPro Corporation

**CERTIFIED PRODUCT:** Fireline F140 Inside Mount Dual Sided Wall Joint System Series

**CERTIFIED MODEL:** F140-2IM-4WLD; 4 in. nominal joint tested at max. opening of 6 in.

F140 Part Number Example/Explanation:

**F140** (Brand/Product Name).

**2** (Hourly Rating);

**IM** (Flange Type – Inside Mount);

**4** (Nominal Joint Width);

**WL** (Condition – Wall to Wall);

**D** (Dual Sided – Multi-directional)



The inside mount wall joint system is attached to the gypsum surface on each side of the joint of the wall assembly with spring mechanism spaced nominally 18 in. on center (oc).

- B. **COVER PLATE – (Not Shown)** Install cover plate on one facing of the joint. The width of cover plate shall overlap the supporting construction (Item 1) a minimum of 3 in. at maximum joint width. Thickness of cover plate shall be not less than 1/8 in. thick for carbon steel or stainless steel; and, fastened on both sides of the joint, 18 in. oc. with minimum #10 × 2-1/2 in. long truss-head screws.

- C. **Stainless Steel Cover (Not Shown):** On the opposite facing or side of the cover plate (Item 2B), install a joint cover consisting of 2 mil stainless steel foil secured to the supporting construction a (Item 1) on both sides of the joint with minimum nominal 3/8 in. diameter, min. 2-1/4 in. long, stainless steel screws and flat washers spaced nominally 12 in. on center (oc).

3. **MOUNTING:** Spring system, inside mount. No fasteners required.

ASTM E1399 Cycling:  
Class IV Cycling at 50%

*Consult the listing report on the Directory of Building Products (<https://bpdirectory.intertek.com>) for the edition of the standard(s) evaluated.*

*Compliance of the assembly described in this Design Listing with the referenced standard relies on verification that the assembly constructed in the field is consistent with that described herein. Intertek certified products may be verified by the approved Intertek label; other products must be verified by the Authority Having Jurisdiction as meeting the specifications stated herein.*