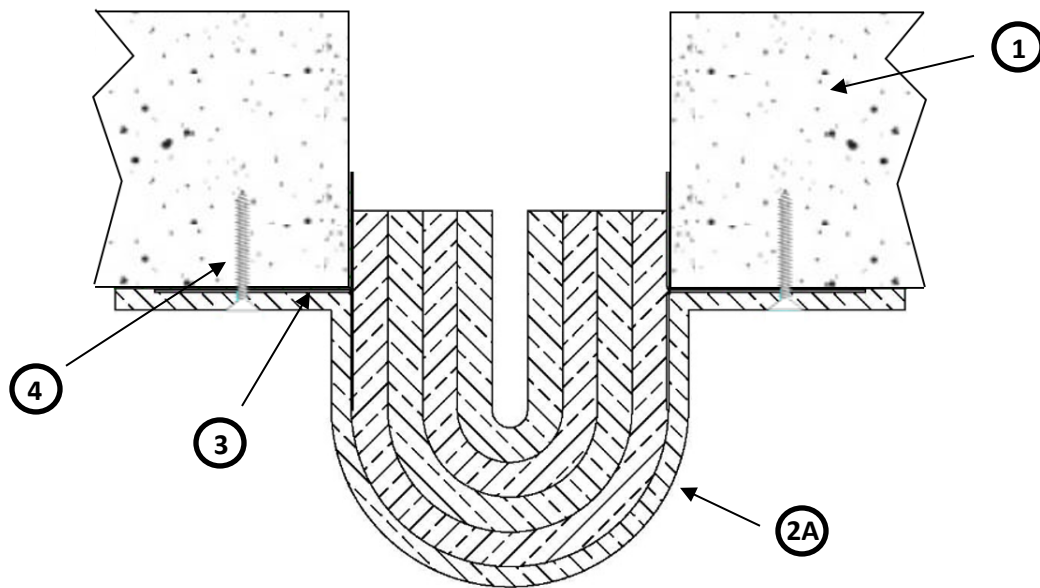


InPro Corporation
Design No. INC/EJCA 180-03
Floor Joint System
Fireline F520
UL 2079, CAN/ULC S115-11
Rating: 3 Hour
ASTM E1399
Cycling – Class IV



1. SUPPORTING CONSTRUCTION: Min. 3-hour fire rated solid concrete floor assembly made from either lightweight or normal weight concrete with a density of 100-150 pcf, with a min. thickness of 5-3/4 in. at the joint face under the cover (Item 2B). Overall slab thickness may increase to accommodate various block out depths (longitudinal recesses) formed in the concrete, to house the cover (Item 2B). The block out width may also vary without restriction.

2. Floor Joint Assemblies: A nominal 6 in. through 20 in. joint width, pre-fabricated system (see table) composed of a rigid metallic architectural joint system and a flexible U-shaped fire barrier.

Attach mechanical components to the concrete floor assembly (Item 1). Max. joint opening range is 36 in.

A. **CERTIFIED MANUFACTURER:** InPro Corporation

CERTIFIED PRODUCT: Fireline F520 Bottom Mount Floor Joint System Series

CERTIFIED MODEL (See Table):

- Example: FL80-3BM-20FL

F520 Part Number Example/Explanation:
FL80 or FL (Brand/Product Name);



3 (Hourly Rating);
BM (Flange Type – Bottom Mount;
20 (Nominal Joint Width, see Table);
FL (Condition – Floor to Floor)

The bottom mount floor joint system is attached to the bottom of the floor assembly using mechanical fasteners (Item 4). When required, overlap male and female ends to form a splice in the joint with a 12 in. overlap as specified in the manufacturer's installation instructions.

- B. COVER PLATE – (NOT SHOWN):** Width of cover plate varies with joint width and shall overlap the full joint system including mounting flanges by a minimum 3 in. Thickness of cover plate shall be not less than 1/8 in. thick for carbon steel or stainless steel; not less than 1/4 in. thick for aluminum alloy; not less than 3/16 in. thick for bronze; and, fastened on one side of the joint opening, 12 in. oc with mechanical fasteners (Item 4).
- C. CHASE WALL CONDITION – (NOT SHOWN):** In conditions where the linear opening is enclosed within a 3-hr fire resistance rated chase wall, as an alternate to the cover plate

(Item 2B), use a joint cover consisting of 2 mil stainless steel foil secured to the supporting construction (Item 1) on both sides of the joint with min. nominal 3/8 in. diameter, min. 2-1/4 in. long, concrete anchoring screws and flat washers spaced nominally 12 in. oc.

- 3. MOUNTING:** Fasten the joints to the concrete using the integral 5 in. × 3 in. 16 GA galvanized or non-galvanized steel expanded metal flanges. Use mechanical fasteners (Item 4) spaced 12 in. oc. Fasteners are to be covered with fire caulking.
- 4. FASTENERS:** Use nominal 1/4 in. diameter, min. 1-3/4 in. long, concrete anchoring screws spaced nominally 6 in. oc. Screw through the joint material and flange of the Bottom Mount to attach the different systems to the concrete. Cover exposed heads of screws with Intertek certified, fire-resistant caulk or sealant.

ASTM E1399 Cycling:
Class IV Cycling (8-in. min. to 36-in. max.)



Model Number	Blanket Layers	Nominal Joint Size	Joint Width Cycling Range
FL80-3BM-8FL	4×1-in.; 1×1/2-in.	8 in.	8 in. – 14.4 in.
FL-3BM-8FL	4×1-in.; 1×1/2-in.	8 in.	8 in. – 12 in.
FL80-3BM-10FL	4×1-in.; 1×1/2-in.	10 in.	8 in. – 18 in.
FL-3BM-10FL	4×1-in.; 1×1/2-in.	10 in.	8 in. – 15 in.
FL80-3BM-12FL	4×1-in.; 1×1/2-in.	12 in.	8 in. – 21.6 in.
FL-3BM-12FL	4×1-in.; 1×1/2-in.	12 in.	8 in. – 18 in.
FL80-3BM-14FL	4×1-in.; 1×1/2-in.	14 in.	8 in. – 25.2 in.
FL-3BM-14FL	4×1-in.; 1×1/2-in.	14 in.	8 in. – 21 in.
FL80-3BM-16FL	4×1-in.; 1×1/2-in.	16 in.	8 in. – 29 in.
FL-3BM-16FL	4×1-in.; 1×1/2-in.	16 in.	8 in. – 24 in.
FL80-3BM-18FL	4×1-in.; 1×1/2-in.	18 in.	8 in. – 32.4 in.
FL-3BM-18FL	4×1-in.; 1×1/2-in.	18 in.	8 in. – 27 in.
FL80-3BM-20FL	4×1-in.; 1×1/2-in.	20 in.	8 in. – 36 in.
FL-3BM-20FL	4×1-in.; 1×1/2-in.	20 in.	8 in. – 30 in.
FL-3BM-22FL	4×1-in.; 1×1/2-in.	22 in.	8 in. – 33 in.
FL-3BM-24FL	4×1-in.; 1×1/2-in.	24 in.	8 in. – 36 in.