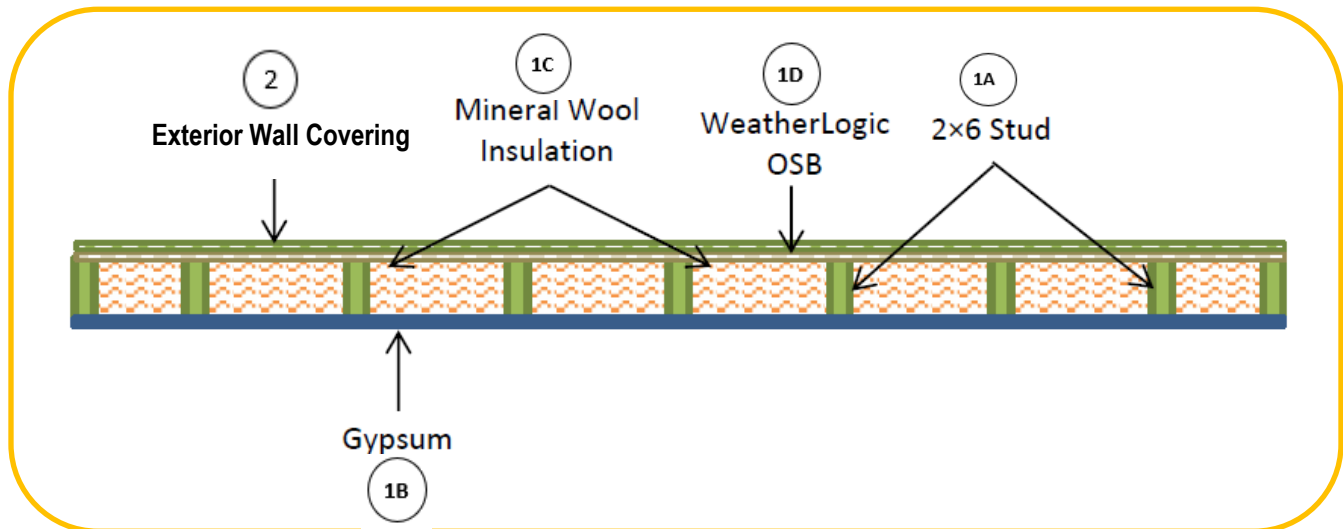


**Louisiana-Pacific Corporation**  
**Design No. LPC/WPPS 60-01**  
**Loadbearing Wall Assembly**  
**LP WeatherLogic® Panel**  
**ASTM E119, UL 263**

**Rating: 1 Hour, Restricted to 41% Maximum Design Load**



**1. WALL ASSEMBLY:** Construct a 1 hour rated gypsum wall assembly, with resistance from either side using the following elements:

- A. **WOOD STUDS** – Install 2 × 6 wood studs spaced 16 in. on center (oc). Attach each wood stud to top and bottom wood plates using three 16d framing nails at each location. Full-depth blocking is required at all unsupported panel edges. Construct top plate of two wood studs installed horizontally at the top of the wall assembly and the bottom plate of a single wood stud.
- B. **GYPSUM BOARD** – Install one layer of nominal 5/8 in. thick Type X gypsum board on interior wall face, oriented vertically. Secure gypsum board using min. 0.092 in. diameter, 6d 1-7/8 in. long drywall nails or 1-7/8 in. long screws meeting ASTM C1002,

spaced 8 in. oc on the perimeter and in the field.

- C. **INSULATION** – Install nominal 5-1/2 in. thick, nominal 2 pcf density, R-23 unfaced mineral wool insulation friction between the wood studs.
- D. **OSB SHEATHING**

**CERTIFIED PRODUCT** – LP WeatherLogic® Panels

Install 7/16 in. thick Performance Category LP WeatherLogic Panels, oriented vertically, on exterior wall face with 6d 1-7/8 in. long nails or 1-7/8 in. long screws meeting ASTM C1002, spaced 6 in. oc on the perimeter and 12 in. oc in the field with 3/8 in. at joint edges.



- E. JOINT FLASHING (Not Shown) – Install one layer of min. 3-3/4 in. wide LP WeatherLogic Seam & Flashing Tape or LP WeatherLogic Seam & Flashing Sealant, at min. 15 wet mil thickness, applied min. 1-3/4 in. on each side of the seam over each joint on LP WeatherLogic Panels.
- 2. EXTERIOR WALL COVERING:** Install one of the following wall coverings on the exterior face of the wall assembly:
- A. LP SmartSide or LP BuilderSeries – Install min. 5/16 Performance Category per the manufacturer's published installation instructions, including LP SmartSide Lap, LP SmartSide Shake, and LP SmartSide Panel siding.
  - B. CEMENT PLASTER – Install min. 3/4 in. thick ICC-ES AC11 Compliant cementitious exterior wall coating over metal lath in accordance with the approved Code Compliance Research Report and manufacturer's installation instructions.
  - C. MANUFACTURED STONE VENEER – Install min. 3/4 in. thick ICC-ES AC51 Compliant adhered manufactured stone masonry veneer in accordance with the approved Code Compliance Research Report and manufacturer's installation instructions.

*Consult the listing report on the Directory of Building Products (<https://bpdirectory.intertek.com>) for the edition of the standard(s) evaluated.*

*Compliance of the assembly described in this Design Listing with the referenced standard relies on verification that the assembly constructed in the field is consistent with that described herein. Intertek certified products may be verified by the approved Intertek label; other products must be verified by the Authority Having Jurisdiction as meeting the specifications stated herein.*