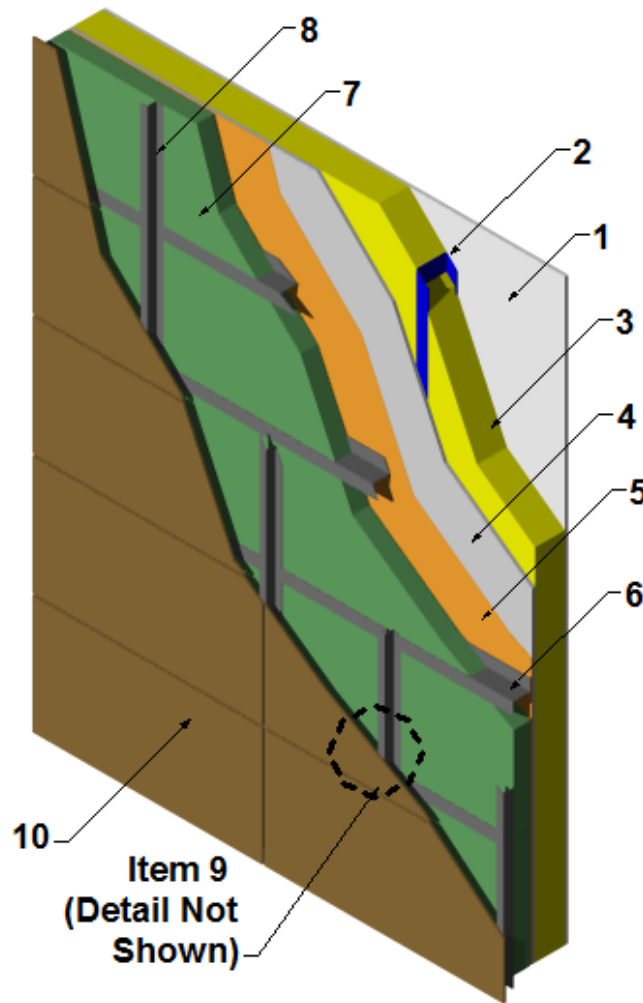


**Parklex Prodema USA, Inc.**  
**Design No. PUI/CWP 30-01**  
**Non-Load Bearing Wall System**  
**NATURCLAD-W F Panels (6 mm, 8 mm & 10 mm thick)**  
**NFPA 285**  
**Rating: Meets Conditions of Acceptance**



**1. INTERIOR CLADDING:** Install nominal 5/8 in. thick Type X gypsum board with long dimension perpendicular to steel studs. Attach to steel studs using Number 6 Type S, 1-1/4 in. long bugle-head screws 8 in. on center (oc) around perimeter and 12 in. oc in the field.

**A. JOINT TAPE AND COMPOUND – (Not Shown)** vinyl or casein, dry or premixed joint compound applied to face layers of gypsum board in two coats to all exposed fastener heads and board joints. A min. 2 in. wide paper, plastic, or fiberglass tape is embedded in first layer of compound over joints in gypsum board.



**2. STEEL STUDS:** Min. 3-5/8 in., 18 GA, galvanized steel studs. Max. spacing 24 in. oc. Secure steel studs to 18 GA top and bottom tracks using 7/16 in. long self-tapping sheet metal screws.

**3. INTERIOR INSULATION:** Install nominal 24 in. wide x 3-1/2 in. thick CertainTeed R-13 unfaced fiberglass insulation in cavities between steel studs.

**4. EXTERIOR SHEATHING:** Install min. 1/2 in. Type X gypsum sheathing (ASTM C1396 or ASTM C1278) or min. 1/2 in. glass fiber sheathed gypsum board (ASTM C1177 or ASTM C1658), or 1/2 in. concrete panels (ASTM C1186 or ASTM C1325), with long dimension perpendicular to steel studs. Attach to steel studs using Number 6 Type S, 1-1/4 in. long bugle-head screws, 8 in. oc around perimeter and 12 in. oc in the field.

A. JOINT TAPE AND COMPOUND – (Not Shown) Vinyl or casein, dry or premixed joint compound applied to face layers of gypsum sheathing in two coats to all exposed fastener heads and board joints. A min. 2 in. wide paper, plastic, or fiberglass tape is embedded in first layer of compound over joints in the exterior gypsum sheathing.

**NOTE:** Items #1 through #4 may be replaced by "Code-complying" brick or masonry construction.

**5. VAPOR BARRIER:** Install nominal 0.26 in. thick VaproShield® Wrapshield SA self-adhering breathable membrane over exterior sheathing, overlapping a min. 4 in. at vertical seams.

**6. ZEE GIRT:** (Horizontal) Install nominal 2-1/2 in. x 3-1/2 in. x 1-1/2 in., min. 20 GA steel zee girt to exterior sheathing. Install using Number 14 x 1-1/2 in. long hex-head screws spaced 24 in. oc through the 2-1/2 in. leg. Overlap lengths a min.

of 1 in. Install zee girts spaced 24 in. oc vertically on the wall assembly. Zee girts are installed in conjunction with the exterior insulation in an alternating pattern.

**NOTE:** Where application of ZEE GIRT is to a substrate of "Code-complying" brick or masonry construction, fastening of the ZEE GIRT to the substrate utilizes 1/4 in. shank x min. 1-1/4 in. long "Tapcon-type" concrete anchor screws 24 in. oc through the 2-1/2 in. leg into the brick or masonry construction.

**7. EXTERIOR INSULATION:** Install nominal 3-1/2 in. thick x 24 in. wide nominal 4 pcf Roxul CavityRock® DD mineral fiber insulation between zee girt. Exterior insulation rests on the 3-1/2 in. leg of zee girt. Install zee girt and exterior insulation in alternating pattern up the wall assembly.

**8. ZEE GIRT:** (Vertical) Install nominal 1-1/2 in. x 1 in. x 2-1/2 in., min. 20 GA steel zee girts perpendicular to horizontal zee girts, spaced a nominal 24 in. oc. Secure vertical zee girts to horizontal zee girts using Number 14 x 1-1/2 in. long hex-head screws through the 2-1/2 in. leg.

**9. FIRESTOP:** (Not Shown) Install nominal 2-1/2 in. x 3-1/2 in. x 1-1/2 in., min. 20 GA steel zee girt horizontally, nominally 25-1/2 in. above the opening (not shown). Secure to horizontal zee girt using Number 14 x 1-1/2 in. long hex-head screws through the 2-1/2 in. leg spaced 24 in. oc.

**10. EXTERIOR CLADDING:** NATURCLAD-W F Composite Wall Panels. Install nominal 4 ft. x 8 ft. x 6mm or 8mm or 10mm thick NATURCLAD-W F composite wall panels using min. 1-1/4 in. long SFS Intec fasteners (1142001) through pre-drilled holes in the panel. Pre-drilled holes are spaced 21 in. oc around the



perimeter and 14 in. oc in the field. Install fasteners through 1 in. leg of zee girt. Vertical joints are not permitted above openings and no horizontal joints within 3 ft. over the openings.

*Consult the listing report on the Directory of Building Products (<https://bpdirectory.intertek.com>) for the edition of the standard(s) evaluated.*

*Compliance of the assembly described in this Design Listing with the referenced standard relies on verification that the assembly constructed in the field is consistent with that described herein. Intertek certified products may be verified by the approved Intertek label; other products must be verified by the Authority Having Jurisdiction as meeting the specifications stated herein.*