

Unifrax I LLC
Design No. UNI/BI 120-13
FIRE RESISTANT VENTILATION AIR DUCT
FyreWrap® Elite® 1.5 Duct Insulation
BS 476: Part 24: 1987
ISO 6944-1985
Fire Resistance Rating Horizontal Duct A
Stability – 2 Hour
Insulation – 2 Hour
Integrity – 2 Hour

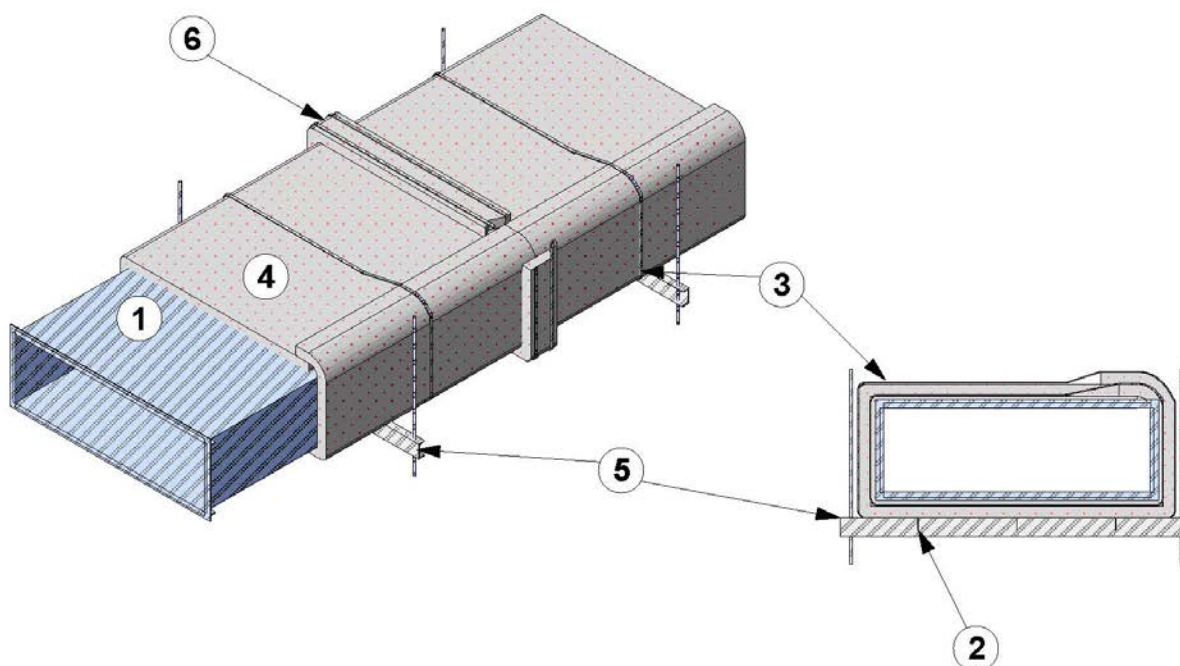


Figure 1

1. VENTILATION AIR DUCT: Use a max. 1000mm (39.4 in.) wide x 500mm (19.7 in.) duct, 0.8mm (0.03 in.) thick galvanized sheet steel with a max. 0.5 m² (5.4 ft²) area. Reinforce the ventilation air duct to HVCA DW/144 requirements and the min. required reinforcements described below, designed to carry the weight of the ventilation air duct assembly covered with a single layer of duct insulation (Item 4) under a fire load equivalent to that of the ISO 834 time-temperature curve. In addition the following reinforcements must be used.

A. **LONGITUDINAL JOINTS** – Use a Pittsburgh lock seam. No sealant is required in longitudinal joints.

B. **CROSS JOINTS** – Cross joints shall be flanged with min. 32mm (1-1/4 in.) x 32mm (1-1/4 in.) x (5mm) (3/16 in.) steel angles with the duct ends turned up a min. of 13mm (1/2 in.). Angles are stitch-welded to ducts with a min. of 38mm (1-1/2 in.) long welds spaced 203mm (8 in.) on center (oc). Cross joint flanges are connected with min. M8 bolts (or equivalent) at each corner and spaced max. 250mm (9.8 in.) oc. When a side of the duct is shorter than the max. oc spacing of the bolts a min. of one bolt must be used at the center of the duct side.

- C. **CROSS JOINT GASKET** – Use a min. 25mm (1 in.) wide x 3mm (0.12 in.) thick Unifrax FyreWrap IG Tape. Gasket centered over the cross joint (Item 1B) angles.
 - D. **REINFORCEMENT AT SUPPORTING CONSTRUCTION** – Install 30mm (1-1/8 in.) x 30mm (1-1/8 in.) x 5mm (3/16 in.) angle around duct centered in the supporting wall. Attach vertical angles to horizontal angles using M8 bolts (or equivalent). Attach reinforcement angles to duct with 4mm (5/32 in.) diameter pop rivet spaced max. 152mm (6 in.) oc.
 - E. Rigidly support the ventilation air duct as specified in Item 5.
2. **PINS:** Use min. 12 GA, 165mm (6-1/2 in.) long, steel insulation pins with nominal 50mm (2 in.) x 50mm (2 in.) self-adhering plate. Pins shall be riveted to the bottom of the ventilation air duct (Item 1) with 4mm (5/32 in.) diameter pop rivets. Pins shall be spaced nominally 152mm (6 in.) from edge of duct and 330mm (13 in.) oc across the duct. Pins shall be spaced nominal 152mm (6 in.) from all duct joints and 483mm (19 in.) longitudinally in the field of the duct.
3. **BANDING:** Use min. 12.7mm (1/2 in.) wide, 0.38mm (0.015 in.) thick stainless steel bands or min. 12.7mm (1/2 in.) wide, 0.38mm (0.015 in.) thick carbon steel bands and secured with min. 25mm (1 in.) long stainless or carbon steel crimp clamps to be used with corresponding banding type. When needed to ease installation, use filament tape as a temporary hold for the duct insulation (Item 4) prior to banding. Place banding a max. 38mm (1-1/2 in.) from all duct insulation (Item 4) edges, 76mm (3 in.) from joint collars (Item 5) and a max. of 305mm (12 in.) oc. Tension the banding to hold the duct insulation (Item 4) in place without cutting or damaging the duct insulation (Item 4) or ventilation air duct (Item 1).
4. **CERTIFIED COMPANY:** Unifrax I LLC
CERTIFIED PRODUCT: Duct Insulation

MODEL: FyreWrap® Elite® 1.5

DUCT INSULATION: Apply one layer of the nominal 38mm (1-1/2 in.) thick, 96 kg/m³ (6 pcf) density duct insulation over the entire surface of the ventilation air duct (Item 1). Apply the duct insulation with transverse joints butted with a nominal 25mm (1 in.) compression of the duct insulation at the joints. Longitudinal joints shall be overlap joints with a nominal 75mm (3 in.) joint. Longitudinal joints shall be positioned on the top of the duct at or near the top corner of the duct. Use blanket, available in various widths, that is fully encapsulated with polypropylene-foil scrim. Cover all visually-exposed ends and edges of duct insulation with nominal 152mm (6 in.) wide, pressure-sensitive, aluminum foil tape. Install nominal 50mm (2 in.) steel speed clips over any Pins (Item 2).

5. **CERTIFIED COMPANY:** Unifrax I LLC

CERTIFIED PRODUCT: Duct Insulation

MODEL: FyreWrap® Elite® 1.5

JOINT COLLAR: Place and center 152mm (6 in.) wide collar of duct insulation over the transverse butt joint. Overlap 152mm (6 in.) wide collar onto each adjacent duct insulation 76mm (3 in.). Locate joints in the collar on the top of the duct offset from the longitudinal joint in the duct insulation (Item 4) and install with a nominal 76mm (3 in.) overlap joint.

6. **SUPPORTS:** Support the horizontal portion of the insulated ventilation air duct (Item 1) using a un-insulated "trapeze" system composed of a 76mm x 36mm (C3 x 5) steel channel as the trapeze cross-member and two 13mm (1/2 in.) all-thread steel rods connected using nuts and washers. Connect the all-thread steel rods to the bottom of the floor assembly using an attachment method designed to carry the weight of the ventilation air duct (Item 1) with duct insulation (Item 4) under a fire load equivalent to that of the EN 1366 exposure and time-temperature curve for the rated period. Place one all-thread steel rod at each end of the trapeze cross-member. Center ventilation air duct (Item 1) with duct

insulation (Item 4) on trapeze cross-member. Space all-thread steel rods 152mm (6 in.) oc from surface of the ventilation air duct. Extend trapeze cross-member at least 50mm (2 in.) past each all-thread, steel rod.

7. SUPPORTING CONSTRUCTION: Refer to Figure 5. Use one of the following wall or floor assemblies.

A. GYPSUM PLASTERBOARD WALL ASSEMBLY – Symmetrical two-hour rated gypsum plasterboard wall assembly constructed of the following:

- i. **STEEL STUDS** – Min. 18 GA galvanized steel studs measuring 92mm (3-5/8 in.) wide with 82mm (1-1/4 in.) legs spaced max. 610mm (24 in.) oc. Attach studs with min. 3.5 x 9.5mm (#6 x 3/8 in.) steel stud framing screws to floor and ceiling tracks.
- ii. **TRACKS** – Channel U-shaped floor and ceiling runners measuring 12.7mm (1/2 in.) deep x 92mm (3-5/8 in.) wide, which are secured to floor and ceiling with 25.4mm (1 in.) long fasteners suitable for the mounting to substrate and spaced max. 457mm (18 in.) oc.
- iii. **GYPSUM PLASTERBOARD** – Cover studs and runners with two layers of 15mm (5/8 in.) thick, gypsum plasterboard on each face. Fasten base layer of gypsum plasterboard to steel studs with 3.5 x 28mm (#6 1-1/8 in.) bugle-head Phillips drywall screws spaced max. 305mm (12 in.) oc. Fasten face layer of gypsum plasterboard with 3.5 x 41mm (#6 x 1-5/8 in.) long bugle Phillips drywall screws spaced max. 203mm (8 in.) oc.

Apply vinyl or casein, dry or premixed joint compound to face layers of gypsum plaster in two coats to all exposed screw heads and gypsum plasterboard joints. Embed min. 51mm (2 in.) wide paper, plastic or fiberglass tape in first layer of joint compound over joints in gypsum plasterboard. Min. wall assembly thickness is 152mm (6 in.) measured from face layer of gypsum plasterboard to opposite face layer of gypsum plasterboard.

B. CONCRETE WALL ASSEMBLY (Not Shown) – Concrete wall assembly min. 152mm (6 in.) thick with a min. fire resistance rating of two hours may be used as an alternate to the Gypsum Plasterboard Wall Assembly (Item 7A).

C. MASONRY WALL ASSEMBLY (Not Shown) – A wall assembly constructed from blocks, bonded with mortar or adhesive, min. 152mm (6 in.) thick with a min. fire resistance rating of two hours may be used as an alternate to the Gypsum Plasterboard Wall Assembly (Item 7A).

8. OPENING: Create an opening in the supporting construction (Item 7). Position the ventilation air duct (Item 1) concentrically or eccentrically in the opening so that the annular space is a max. 125mm (5 in.). Establish an opening designed to house the ventilation air duct (Item 1) without duct insulation (Item 4).

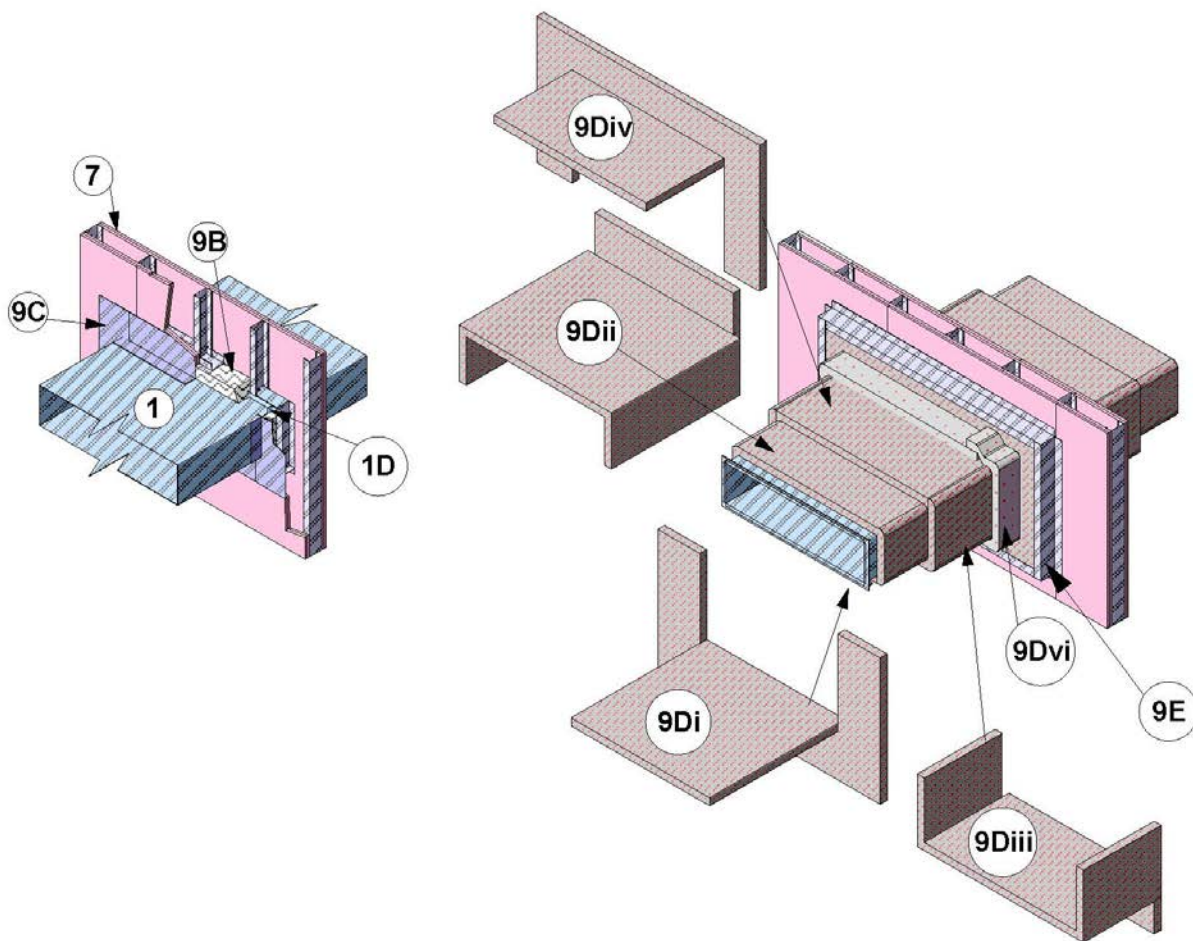


Figure 2

9. PENETRATION FIRESTOP: Install two hour, fire-resistant, EN1366-3 compliant, firestop system. Install firestop between the supporting construction (Item 6) and the un-insulated ventilation air duct (Item 1). Use a firestop system constructed of the following components.

A. **CERTIFIED COMPANY – Unifrax I LLC**
CERTIFIED PRODUCT – Duct Insulation
MODEL – FyreWrap® Elite® 1.5

PACKING MATERIAL – Fill the entire annular space width with certified duct insulation without the encapsulation (foil scrim). Pack duct insulation into the annular space to achieve a min. 33% compression of the duct insulation.

B. **FIRESTOP FLASHING –** Install 1mm (0.04 in.) thick, 175mm (6.9 in.) x 75mm

(3 in.) galvanized steel angle flashing over the packing material. Install top and bottom flashing so that the flashing is butted against the reinforcement cage (Item 8A) and flush against the supporting construction (Item 6). Install side flashing over top and bottom flashing with a min. 75mm (3 in.) overlap. Attach flashing with appropriate fastening hardware equivalent to 3.5 x 41mm (#6, 1-5/8 in.) long bugle Phillips screws.

C. **FIRESTOP PINS (Not Shown) –** Install min. 12GA 165mm (6-1/2 in.) pins with a nominal 50mm x 50mm (2 in. x 2 in.) self-adhering plate. Rivet the pins to the firestop flashing (Item 8C) at each corner of the firestop flashing and space nominally 305mm (12 in.) oc.

D. CERTIFIED COMPANY – Unifrax I LLC

CERTIFIED PRODUCT – Duct Insulation

MODEL – FyreWrap® Elite® 1.5

FIRESTOP DUCT INSULATION – At the supporting construction (Item 6) install the firestop duct insulation as follows. Seal all joints and open ends of the firestop duct insulation with nominal 152mm (6 in.).

- i. Install duct insulation so that the insulation covers a nominal 975mm (38 in.) of the bottom of the duct, a min. of 305mm (12 in.) of the wall below the duct and the wall along the sides of the duct extended 305mm (12 in.) above the duct.
- ii. Install duct insulation so that the insulation covers a nominal 975mm (38 in.) of the top of the duct, the side of the duct extended to be 25mm (1 in.) below the bottom insulation and the a min. of 305mm (12 in.) of supporting construction above the duct.
- iii. Install duct insulation over the first layer of the firestop duct insulation to cover a nominal 660mm (26 in.) of the top of the first layer of the firestop duct insulation, the first layer of the firestop duct insulation above the duct and the first layer of firestop duct insulation along the sides of the duct extended to

be even with the first layer of the firestop duct insulation.

- iv. Install duct insulation so that the insulation covers a nominal 660mm (26 in.) of the top of the duct, the side of the duct extended to be 25mm (1 in.) below the bottom insulation and extended to be even with the first layer of the firestop duct insulation on the supporting construction .
 - v. Place nominal 50mm (2 in.) steel speed clips over all pins on bottom of duct and on wall.
 - vi. Install a 152mm (6 in.) joint collar tightly against the firestop duct insulation overlapped onto the wall with the same installation technique as described in Item 5.
 - vii. Seal all joints with nominal 152mm (6 in.) wide, pressure-sensitive, aluminum foil tape.
- E. WALL INSULATION FRAME –** Install Z-shaped steel flashing with 75mm (3 in.) legs and 100mm (4 in.) height, 1mm (0.04 in.) thick around the firestop duct insulation on the supporting construction. Cut and fold top and bottom flashing nominal 50mm (2 in.) and rivet to side flashing to create a frame. Attach flashing to supporting construction using appropriate fasteners equivalent to 3.5 × 41mm (#6, 1-5/8 in.) long bugle Phillips screws.