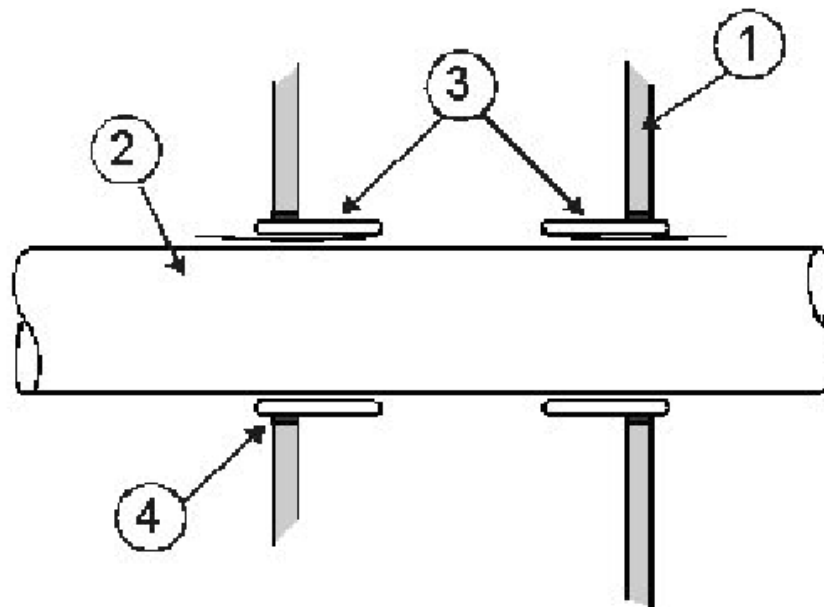


**3M Company**  
**Design No. 3M/PV 120-05**  
**Through Penetration**  
**3M™ FireStrap™**  
**3M™ FireDam FD-150+**  
**3M™ Fire Barrier IC 15WB+**  
**3M™ Fire Barrier CP 25WB+**  
**3M™ Fire Barrier 3000WT**  
**CAN/ULC-S115**  
**Rating: See Table 1**  
**Pressure Differential: Positive, 50 Pa (0.20 in. w.g.)**

**TABLE 1. RATINGS**

		<b>CAN/ULC-S115</b>
<b>Penetrating Item</b>	<b>Max. Pipe Size</b>	<b>F, FT, FH, FTH</b>
<b>PVC</b>	<b>2 in.</b>	<b>1 &amp; 2 Hr.</b>
<b>ccABS</b>	<b>3 in.</b>	<b>1 &amp; 2 Hr.</b>
<b>ABS</b>	<b>3 in.</b>	<b>1 &amp; 2 Hr.</b>
<b>PVC- Thin Wall</b>	<b>2 in.</b>	<b>1 &amp; 2 Hr.</b>



**Figure 1. Penetration Detail**



1. **WALL ASSEMBLY:** Code confirming 1- or 2-hour fire-rated wall, nominal 2x4 steel or wood framed gypsum wallboard, wall assembly.
2. **PENETRATING ITEMS:** (See Table 1) Schedule 40, ccABS, ABS, PVC pipes for use in DWV (Drain, Waste, and Vent) or Closed (Process and Supply) piping systems, and PVC-Thin Wall Vacuum Tubing (nominal 2-in. diameter). Ratings achieved will equal that of the wall assembly.

3. **FIRESTOP SYSTEM COMPONENTS:**

Pipe Size	Opening Diameter
1-1/2 in.	2-1/2 in.
2 in.	3 in.
3 in.	4-1/2 in.

**Certified Products: 3M™ FireStrap™**

Install with 1/4-in. of the firestop exposed outside the surface of the gypsum wall assembly according to the manufacturer's instructions.

Use 3M™ FireStrap™ 1-1/2-in. for PVC – Thin Wall Vacuum Tubing (nominal 2-in. diameter).

4. **FIRESTOP SYSTEM COMPONENTS:**

**Certified Products: Sealant**

- 3M™ Fire Barrier CP 25WB+
- 3M™ Fire Barrier IC 15WB+
- 3M™ FireDam FD-150+
- 3M™ Fire Barrier 3000WT

Apply within the annular space between the device (Item 3) and the opening to provide a smoke seal. Firestop system is applied to both sides of the wall.

Consult the listing report on the Directory of Building Products (<https://bpdirectory.intertek.com>) for the edition of the standard(s) evaluated.

*Compliance of the assembly described in this Design Listing with the referenced standard relies on verification that the assembly constructed in the field is consistent with that described herein. Intertek certified products may be verified by the approved Intertek label; other products must be verified by the Authority Having Jurisdiction as meeting the specifications stated herein.*