

McGrory Glass, Inc.
Design No. MGI/FRG 60-01
Glazed Wall with Fire Rated Glass
Fire Rated Glass
ASTM E119, UL 263, CAN/ULC S101
Rating: 1 Hour, Non-Load Bearing Wall

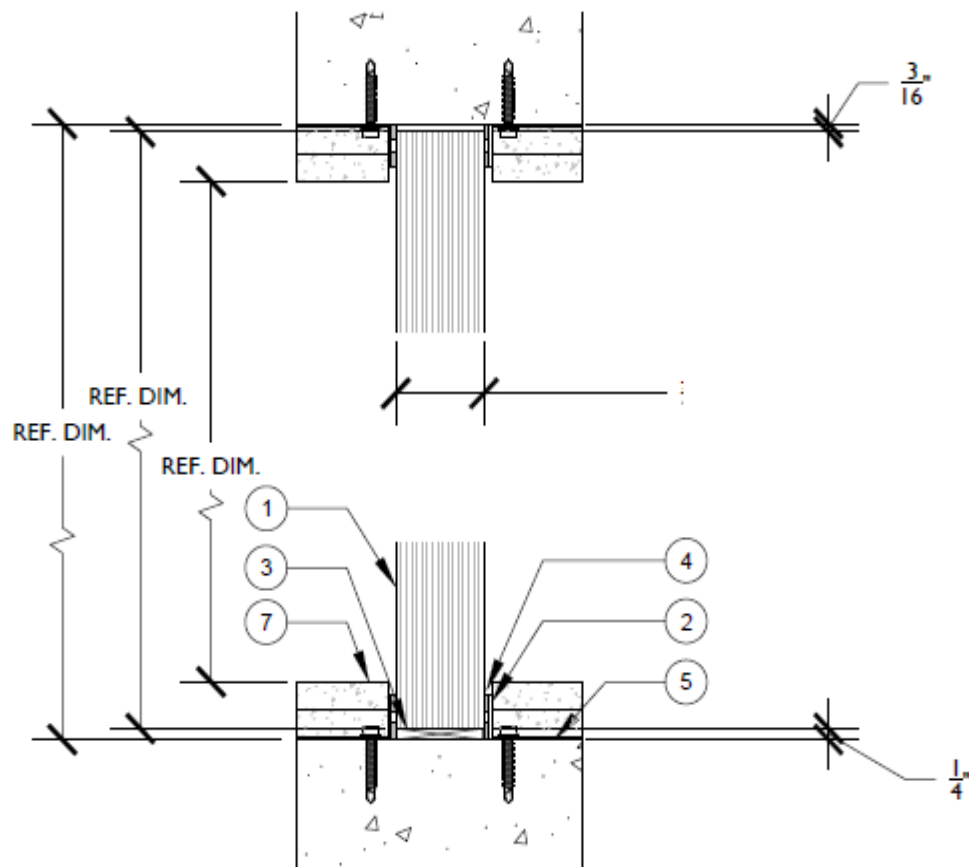


Figure 1 – Masonry Wall Installation

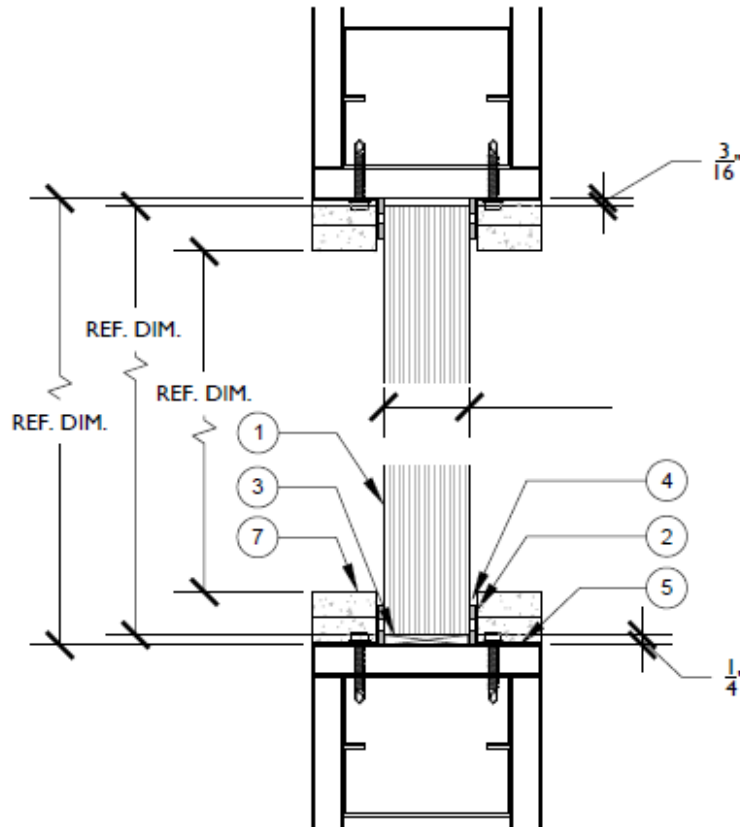


Figure 2 – Gypsum Wall Installation

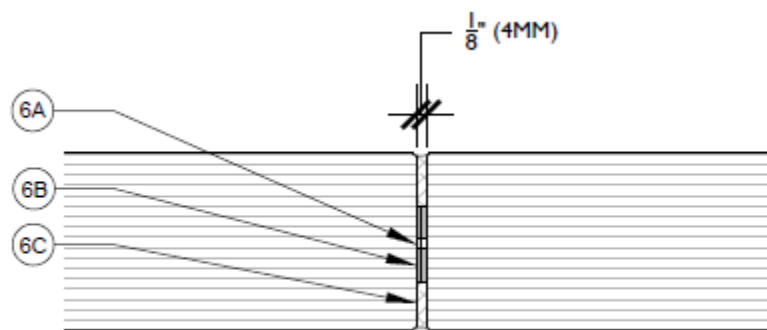


Figure 3 – Pyrobel 60-25 Butt Glaze Details

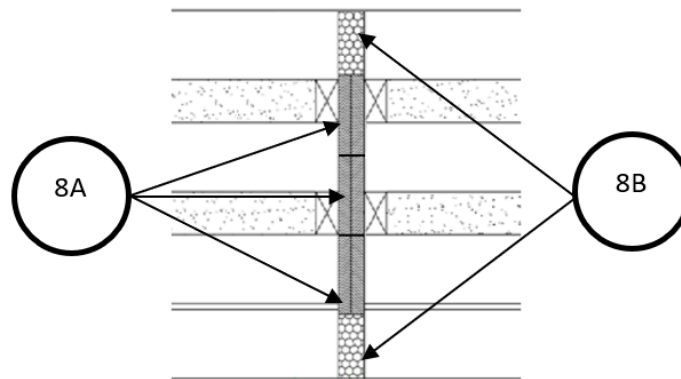


Figure 4 – Pyrobel-T EI60-44 Vision Line Joint Details

1. CERTIFIED MANUFACTURER: McGrory Glass, Inc.

CERTIFIED PRODUCT: Glazed Non-load Bearing Wall with Fire Rated Glass

Pyrobel 60-25 or 60-25EG glazing panels consist of multiple layers (5 to 6) of laminated annealed panes with intumescent interlayers, for a final thickness of 27 to 30 mm (+/- 3 mm). Pyrobel 60-25 products may be faced with glass clad polycarbonate (GCP) panels having a max. thickness of 1 in. and max. non-glass content of 0.75 in.

- A. Pyrobel 60-25 GLASS PANEL – Installed max. height 3,098 mm (122 in.) × max. width 1,575 mm (62 in.) × 25 mm (1 in.) thick. Limiting factor for installed height and width is the max. area 4.88 m² (7,564 in²). Max. area cannot be exceeded regardless of aspect ratio.
- B. Pyrobel 60-25 GLASS CLEAR VIEW* – Max. height and max. width are both 120 in. (3,048 mm); however, the limiting factor is the max. clear view area which is 7,200 in² (4.645 m²). Max. clear view area cannot be exceeded regardless of aspect ratio.

The Pyrobel-T EI60-44 Vision Line assembly consists of multiple Pyrobel-T EI60-44 panels interconnected with 4 mm wide butt joints. Pyrobel-T EI60-44 may also be installed in a 4-sided framed application. The Pyrobel-T EI60-44 glass is nominally 44 mm thick.

- C. Pyrobel-T EI60-44 Vision Line Clear view – Max. height of 174-1/4 in. (4,423 mm) × max. width of 60 in. (1,524 mm) with a max. area of 10,455 in.² (6.745 m²).

- 2. **GLAZING STOP:** Min. 1 in. (25.4 mm) wide × 1 in. (25.4 mm) high × 18 GA thick steel angle, anchored with min. No. 6 steel 1 in. length (min. diameter and length), spaced 8 in. on center (oc) starting 2 in. from each end.
- 3. **CALCIUM SILICATE SETTING BLOCKS:** 1 in. (25.4 mm) × 1/4 in. (6 mm) × 3 in. (76.2 mm) setting blocks located at quarter points.
- 4. **GLAZING TAPE:** Fire rated closed-cell PVC glazing tape 1/8 in. (3 mm) thick × 1 in. (25.4 mm) wide min., or fire rated closed-cell PVC glazing tape (2) strips totaling 1/8 in. (3 mm) thick × 1 in. (25.4 mm) wide min.



5. **WALL:** Fire rated masonry wall construction or gypsum 1 hour wall with min. 20 GA steel nested runners and studs.
6. **BUTT GLAZED DETAILS:**
 - A. Kerafix 2000 Superwool X607 (4 mm to 5 mm wide x 3 mm thick).
 - B. Kerafix FXL 200 (max. 10 mm wide x 2 mm thick).
 - C. Silicone Sealant. Entire joint can be filled with silicone without items 6A and 6B.

* The max. clear view area cannot be exceeded regardless of the aspect ratio to the butt glazed details.
7. **GYPSUM WALL BOARD:** Two layers, min. 1/2 in. thick, Type X or Type C. Held in place by 2-1/2 in. drywall screws or fire rated adhesive.
8. **PYROBEL-T EI60-44 VISION LINE JOINT DETAILS:**

When using the Pyrobel-T EI60-44 Vision Line system, install the following products to fill the max. 4 mm joints:

 - A. Apply three rows of ROLF KUHN GMBH Kerafix FXL 200 (each 10 mm wide x 2 mm thick) to each glass edge. The Kerafix FXL 200 will occupy approximately 30 mm of the glass thickness and the full 4 mm width of the joint.
 - B. Fill the remainder of the gap with Dow Chemical Company's Dowsil 895 Structural Glazing Sealant Black.

Consult the listing report on the Directory of Building Products (<https://bpdirectory.intertek.com>) for the edition of the standard(s) evaluated.

Compliance of the assembly described in this Design Listing with the referenced standard relies on verification that the assembly constructed in the field is consistent with that described herein. Intertek certified products may be verified by the approved Intertek label; other products must be verified by the Authority Having Jurisdiction as meeting the specifications stated herein.