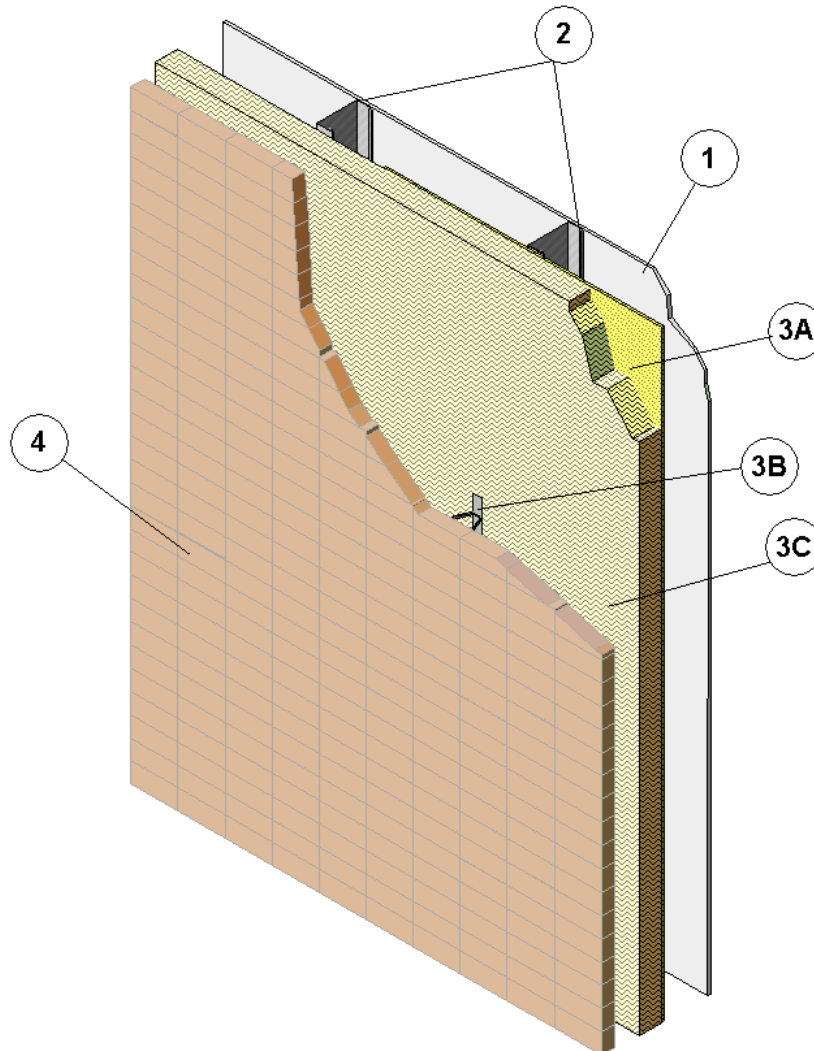

Design Number BASF/FI 30-02
Exterior Non-Load Bearing Wall System
BASF Corporation
WALLTITE® US, WALLTITE® US N, and WALLTITE® HP+
NFPA 285 (2012)
Rating: Meets the Requirements



1. **GYPSUM WALLBOARD:** 5/8 in. thick Type X gypsum wallboard installed with long dimension perpendicular to steel studs (Item 2). Attach studs with # 6 Type S, 1-1/4 in. long bugle-head screws 8 in. on center (oc) around perimeter and 12 in. oc in the field.

A. JOINT TAPE AND COMPOUND – (Not Shown) Vinyl or casein, dry or

premixed joint compound applied to face layers of gypsum wallboard (Item 1) in two coats to all exposed fastener heads and gypsum wallboard joints. A min. 2 in. wide paper, plastic, or fiberglass tape is embedded in first layer of compound over joints in gypsum wallboard (Item 1).

2. **STEEL STUDS:** Min. 3-5/8 in., 20 GA galvanized steel studs. Max. spacing 24 in. oc. Install lateral braces (not shown) 48 in. vertically oc. Secure bracing with # 8, 1/2 in. long pan-head framing screws.

3. **EXTERIOR WALL COVERING:** Incorporate the following construction features into exterior wall assembly:

A. **SHEATHING** – Install 1/2 in. thick Densglas Gold Sheathing water repellent gypsum perpendicular to steel studs (Item 2). Attach using # 6 Type S, 1-1/4 in. long bugle-head screws 8 in. oc around the perimeter and 24 in. in the field.

B. **ANCHORS** – Install 4 in. Byna-Lok Ties 24 in. oc vertically on each steel stud (Item 2), securing them through sheathing (Item 3A) with 5 in. long zinc coated hex-head, self-tapping screws.

- C. **CERTIFIED MANUFACTURER:** BASF Corporation

CERTIFIED PRODUCT: Polyurethane Foam Insulation

MODEL: WALLTITE® US, WALLTITE® US N, or WALLTITE® HP+

EXTERIOR WALL INSULATION – Install a nominal 3 in. thick 2 (± .15) pcf density layer of WALLTITE® US, WALLTITE® US N, or WALLTITE® HP+ polyurethane foam applied over the sheathing (Item 3A).

4. **BRICK FINISH:** 4 in. red clay brick (3-5/8 in. x 2-1/4 in. x 7-5/8 in.) laid in a running bond pattern. Use Type N mortar, leaving a nominal 2 in. air gap between the brick and the exterior wall insulation (Item 3C).