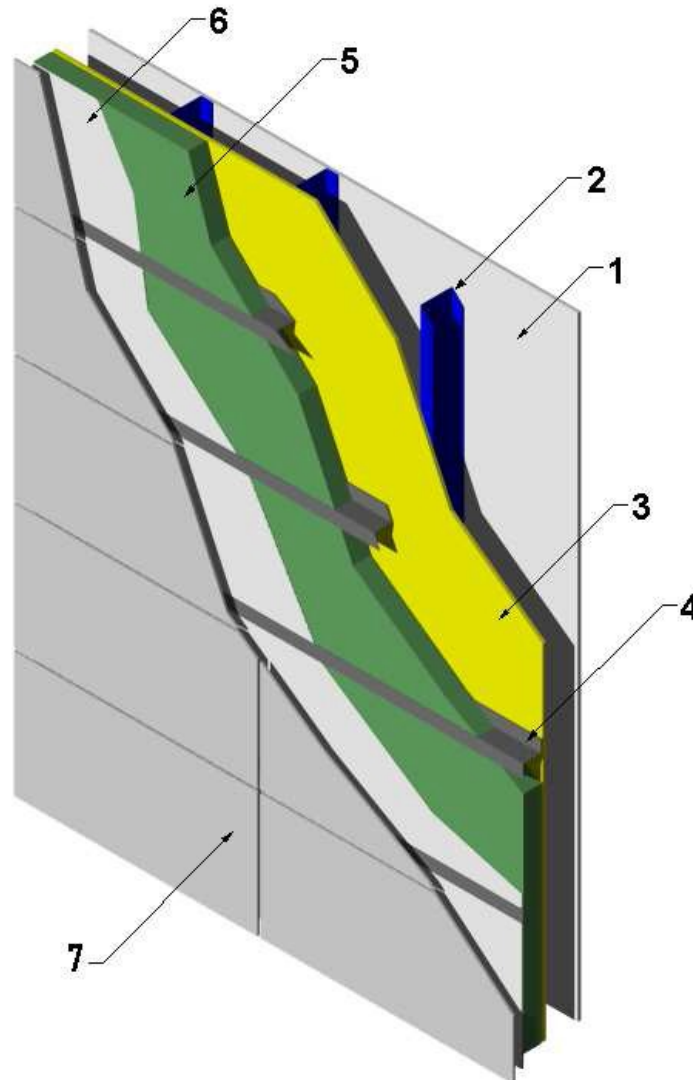


---

BASF/FI 30-03  
Non-Load Bearing Wall System  
BASF Corporation  
WALLTITE® US and WALLTITE® HP+  
NFPA 285 (2012)  
Rating: Meets the Requirements

---



1. **INTERIOR CLADDING:** Install nominal 5/8 in. thick Type X gypsum board with long dimension perpendicular to steel studs (Item 2). Attach to steel studs (Item 2) using # 6 Type S, 1-1/4 in. long bugle-head screws spaced 8 in. on center (oc) around perimeter and 12 in. oc in the field.

- A. **JOINT TAPE AND COMPOUND –** (Not Shown) Vinyl or casein, dry or premixed joint compound applied to face layers of gypsum board (Item 1) in two coats to all exposed fastener heads and board joints. A min. 2 in. wide paper, plastic, or fiberglass tape is embedded in first layer of compound over joints in gypsum board (Item 1).

2. **STEEL STUDS:** Use nominal 3-5/8 in., 20 GA, galvanized steel studs spaced nominal 16 in. oc. Secure steel studs to 20 GA top and bottom tracks using 7/16 in. long self-pan head framing screws.
3. **EXTERIOR SHEATHING:** Install 5/8 in. thick Densglas Gold Exterior Sheathing water repellent gypsum perpendicular to steel studs (Item 2). Attach using # 6 Type S, 1-1/4 in. long bugle-head screws spaced 8 in. oc around the perimeter and 12 in. oc in the field.
4. **ZEE GIRT:** Install nominal 3-5/8 in. x 1-7/16 in. x 1-1/2 in., 18 GA steel zee girt to exterior sheathing (Item 3), spaced per the requirements of the exterior veneer (Item 7). Secure through exterior sheathing (Item 3) to steel studs (Item 2) using # 12 x 1-1/2 in. long Tek screws (two screws per stud) spaced 16 in. oc through the 1-1/2 in. leg. Overlap lengths min. 1 in.
5. **CERTIFIED MANUFACTURER:** BASF Corporation  
  
**CERTIFIED PRODUCT:** Polyurethane Foam Insulation  
  
**MODEL:** WALLTITE® US and WALLTITE® HP+

Spray-apply max. 3-1/2 in. thick, 2.0 pcf density WALLTITE® US or WALLTITE® HP+ polyurethane foam insulation directly on exterior sheathing (Item 3) between zee girts. Ensure overspray is removed from the face of the zee girts (Item 4) after application of foam.

6. **CERTIFIED MANUFACTURER:** Flame Seal Products Inc.

**CERTIFIED PRODUCT:** Intumescent Coating

**MODEL:** Flame Seal TB™

Apply intumescent coating at a nominal thickness of 25 mils wet film thickness (approximately 1.6 gal/100ft<sup>2</sup>) over exterior insulation (Item 5). Prior to applying, ensure zee girts are taped to ensure coating is not on the face of the zee girt.

7. **EXTERIOR VENEER:** Install Alucobond® Plus ACM (Aluminum Composite Metal Panel) system with max. 60-5/16 in. x 79-5/8 in. panels to the exterior face of the wall assembly. Secure panels to zee girt (Item 4) using # 12 x 1 in. long Tek screws spaced nominal 16 in. oc.