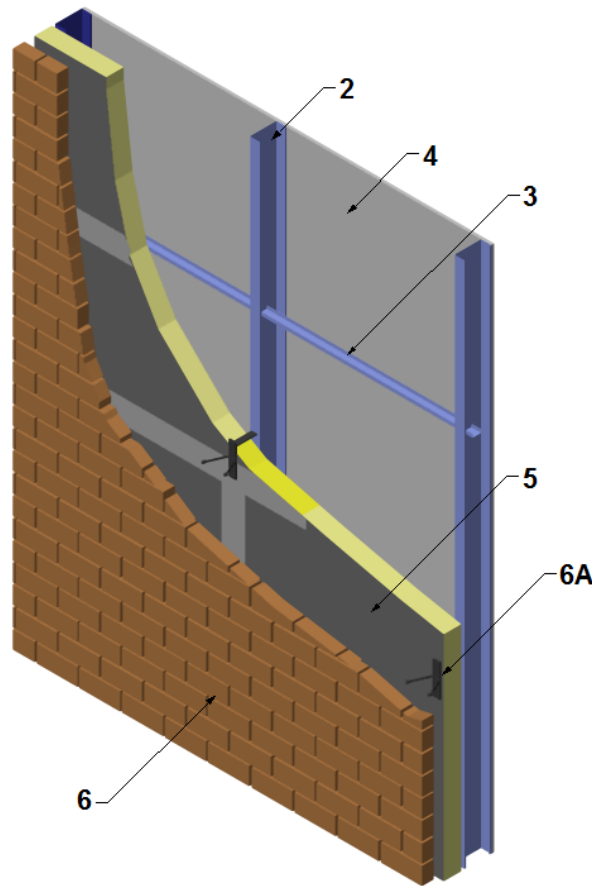


**Johns Manville Corporation
Design No. JMI/FBI 30-03
Exterior Wall Assembly
AP™ Foil Faced Foam Sheathing
NFPA 285
Meets Conditions of Acceptance**



Item 1: Exterior Wall Assembly

- 1. EXTERIOR WALL ASSEMBLY:** Incorporate construction features in the exterior wall assembly as described in Items 2 through 7.
- 2. STEEL FRAMING:** Install nominal 3-5/8 in., 25 GA steel studs spaced nominally 24 in. on center (oc). Attach steel studs to 25 GA top and bottom steel tracks using nominal #8 x 1/2 in. long, self-drilling screws attached to the front and back of each steel stud.
- 3. LATERAL BRACING:** Install min. 16 GA steel lateral bracing perpendicular to steel framing measuring 1-1/2 in. wide with 1/2 in. legs, spaced nominally 48 in. oc vertically.
- 4. INTERIOR GYPSUM:** On the interior side of the exterior wall assembly, apply one layer of 5/8 in. thick, Type X gypsum board with the long dimension perpendicular to the steel framing. Secure using #6 x 1-1/4 in. long, Type S screws, spaced 8 in. oc around the perimeter and 12 in. oc in the field.



- A. **JOINT TAPE AND COMPOUND** – (Not Shown) Apply a level 2 finish of vinyl or casein, dry or premixed joint compound, applied in two coats to all exposed fastener heads and gypsum board joints. Embed min. 2 in. wide paper, plastic, or fiberglass tape in first layer of compound over joints in gypsum board.

5. CERTIFIED COMPANY: Johns Manville Corporation

CERTIFIED PRODUCT: Foam Insulation Panel

MODEL: AP™ Foil Faced Foam Sheathing

FOAM INSULATION PANEL – Install min. 4-1/2 in. thick, nominal 2-pcf density, foam insulation panels measuring nominally 4 ft. wide × 8 ft. long. Install foam insulation panels to exterior side of steel framing with the long edges horizontal. Prior to installing foam insulation panels, and when needed, trim foam insulation panels. Secure the foam insulation panels to steel framing using #10 × 6 in. long, self-drilling screws, inserted through 2 in. plastic or steel washers installed nominal 16 in. oc around the perimeter and in the field. After installing foam insulation panels, seal all vertical and horizontal joints with nominal 4 in. wide W.R. Grace Vycor Pro Butyl self-adhering Flashing Tape centered over the joint.

6. BRICK VENEER: Install a brick veneer using the following elements:

- A. **BRICK VENEER ANCHORS** – Install 5-1/8 in. long Hohmann and Barnard HB X-Seal

Veneer anchors through the foam insulation panels, secured into the steel framing using two #14 × 6 in. long polymer coated screws. Space brick anchors 24 in. oc around the perimeter and in the field. Insert pintle tie into anchor expansion slots and rest tie base horizontally in mortar bed between exterior brick layers.

- B. **EXTERIOR BRICK** – Install standard 4 in. thick red clay brick laid in a "running bond" pattern using mortar. Provide a nominal 1 in. air gap between the unexposed side exterior brick face and the outer most surface of the foam insulation panels.

- C. **MORTAR** – Use Type S mortar between exterior brick joints.

- D. **LINTEL** – (Not Shown): Install 4 in. × 4 in. × 1/4 in. steel angle lintel above window opening, extending past the window opening by 8 in. on both sides.

- 7. FLASHING:** (Not Shown) Install min. 2 in. × 8 in., 0.82 in. aluminum angle around the window opening. Install from interior and exterior sides with min. 2 in. overlap of angle legs at the inside perimeter of the window opening. Fasten the steel angle leg to the steel framing at the overlap with #6 × 1-1/4 in. long, self-drilling screws, spaced nominal 24 in. oc along the top and bottom; and 12 in. oc along the sides. Fasten aluminum angle to brick veneer using 3/16 in. × 1-1/4 in. long concrete anchors spaced 24 in. oc.

Consult the listing report on the Directory of Building Products (<https://bpdirectory.intertek.com>) for the edition of the standard(s) evaluated.

Compliance of the assembly described in this Design Listing with the referenced standard relies on verification that the assembly constructed in the field is consistent with that described herein. Intertek certified products may be verified by the approved Intertek label; other products must be verified by the Authority Having Jurisdiction as meeting the specifications stated herein.