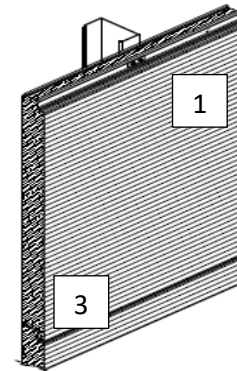
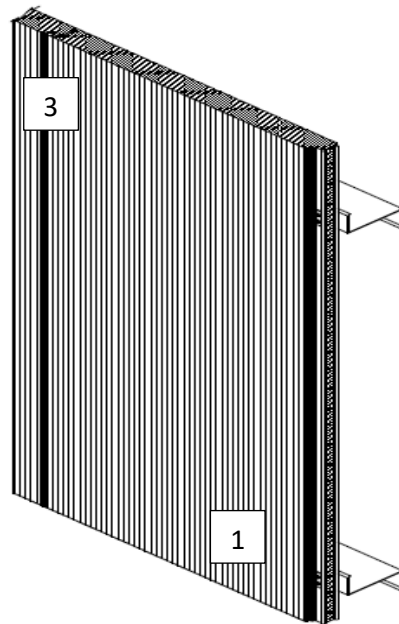

Kingspan Insulated Panels, Inc.
Design No. KIP/IMWP 25-01
Insulated Metal Wall Panels
KS SERIES AND OPTIMO
CAN/ULC-S134
Rating: Meets Conditions of Acceptance



- 1. CERTIFIED MANUFACTURER:** Kingspan Insulated Panels, Inc.

CERTIFIED PRODUCT: Insulated Metal Wall Panels

CERTIFIED MODEL: KS Series and Optimo Panels

PANELS – Horizontally or vertically oriented, 24 in. to 42 in. wide × 2 in. to 6 in. thick, insulated metal panels installed to the exterior side of steel framing. Panel facings are min. 26 GA on the exterior and the interior side, having an ASTM A653 SS Grade 33 with a G90

galvanized coating, or ASTM A792 SS Grade 33 AZ50 steel sheet with 55% aluminum-zinc alloy coating. The panel core is polyisocyanurate or Quadcore rigid foam.

FASTENERS – For horizontal orientation, attach panels to vertical steel framing members with max. 48 in. on center (oc) horizontal fastener spacing. For vertical installation, attach panels to each horizontal steel girt spaced max. 92 in. oc. Use manufacturer's hidden fastener clips and two 1/4-14 or 1/4-20 HWH steel fasteners with #3 or #5 self-drilling point, respectively.



2. GYPSUM BOARD: (Optional) (Not Shown) Install min. 1/2 in. thick gypsum board to the interior side of the steel framing using 1-1/4 in. wafer-head corrosion resistant screws, spaced at 8 in. oc around the wall perimeter and 12 in. oc within the gypsum board field.

3. JOINTS AND SEAMS:

VERTICAL PANEL ORIENTATION – Panel edge tongue and groove joints must be sealed with liquid butyl sealant, supplied by Kingspan.

HORIZONTAL PANEL ORIENTATION – Panel edge tongue and groove joints must be sealed with liquid butyl sealant, supplied by Kingspan.

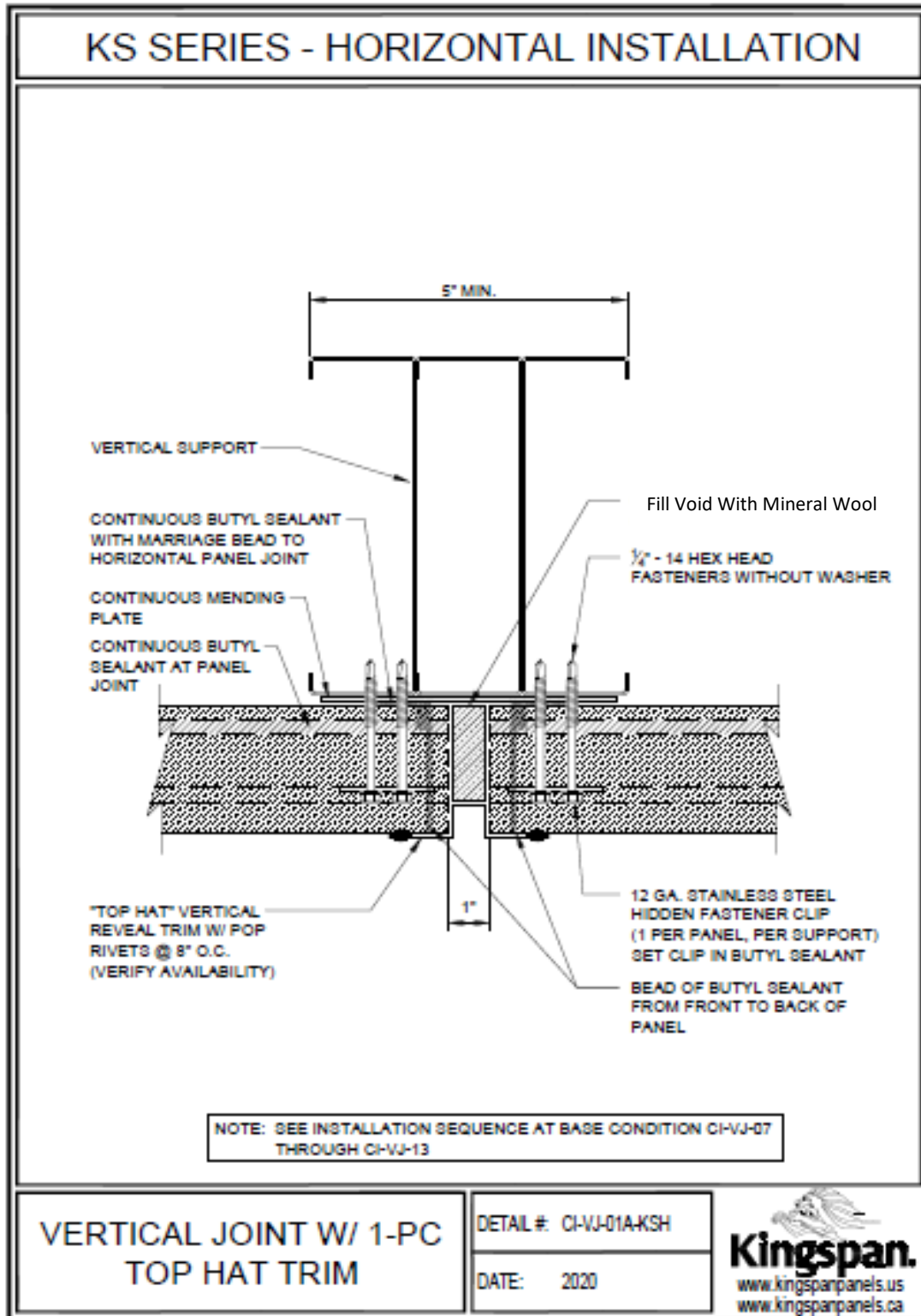
The vertical gap between ends of consecutive horizontally oriented panels is nominally 1/2 in. The vertical gaps are to be treated according to Kingspan Detail. No. CI-VJ-01A-KSH, CI-VJ-01B-KSH, or CI-VJ-01-KSH (see attached), with min. 26 GA steel mending plate and min. 26 GA top hat steel trim.

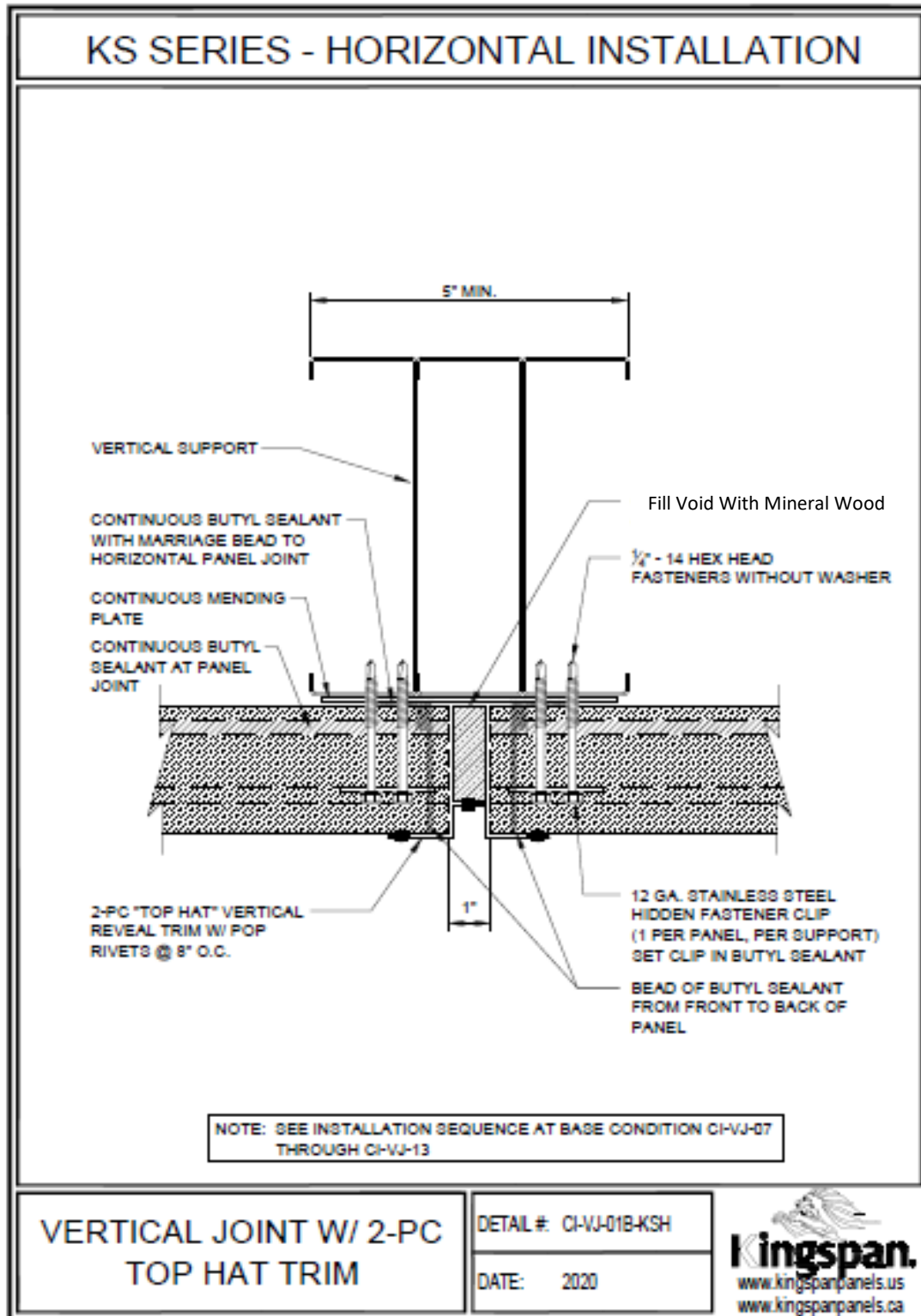
4. OPENING FLASHING: (Not Shown) The inside perimeter of openings in the wall assembly (cutouts) shall be continuously enclosed with 26 GA C-shaped steel flashing.

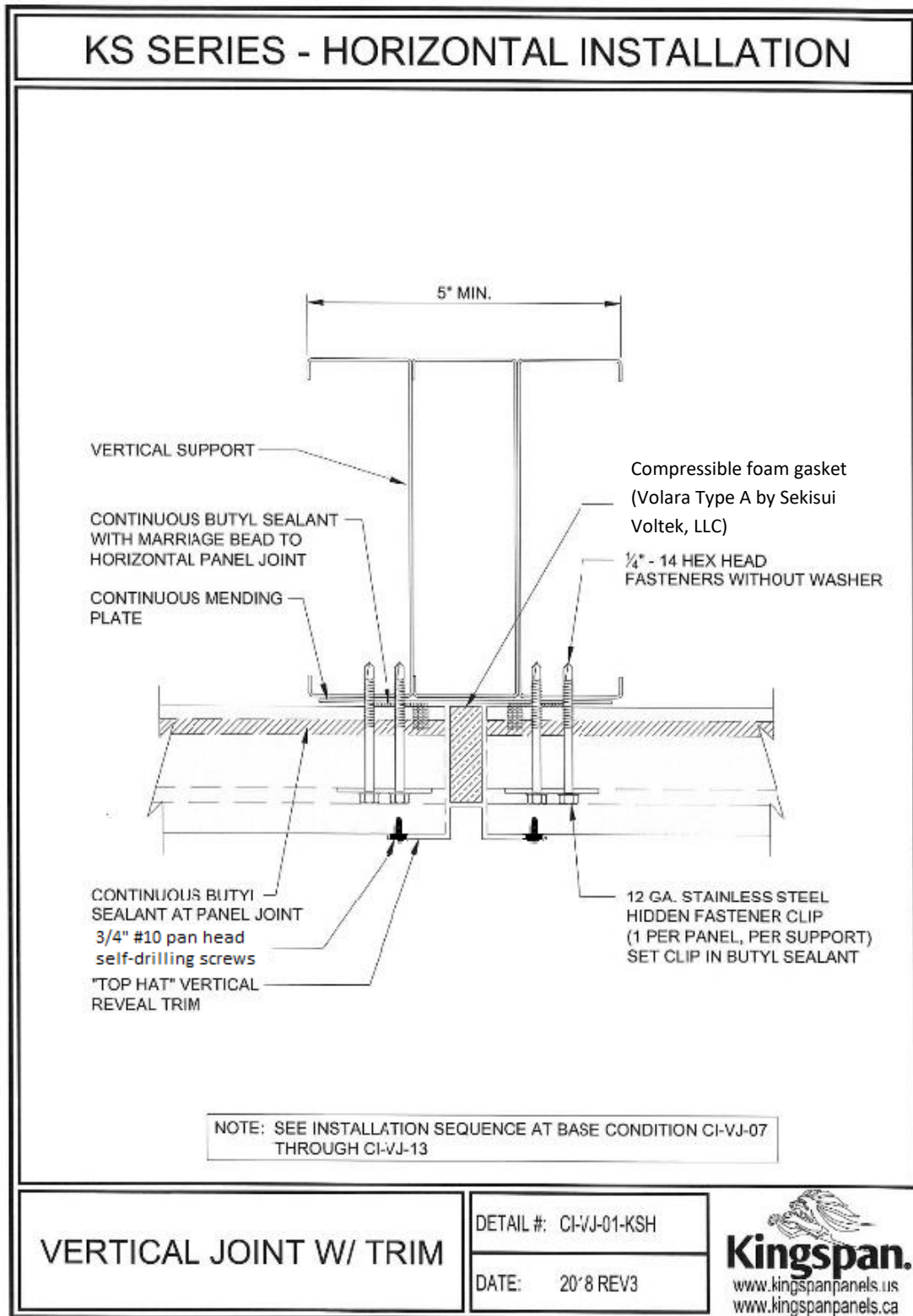
5. HORIZONTAL STACK JOINTS: (Not Shown) Stack joints, when required, are to be installed according to Kingspan Detail No. CI-SJ-01-KSV, CI-SJ-02-KSV or Drawing #6 (see attached).

Consult the listing report on the Directory of Building Products (<https://bpdirectory.intertek.com>) for the edition of the standard(s) evaluated.

Compliance of the assembly described in this Design Listing with the referenced standard relies on verification that the assembly constructed in the field is consistent with that described herein. Intertek certified products may be verified by the approved Intertek label; other products must be verified by the Authority Having Jurisdiction as meeting the specifications stated herein.

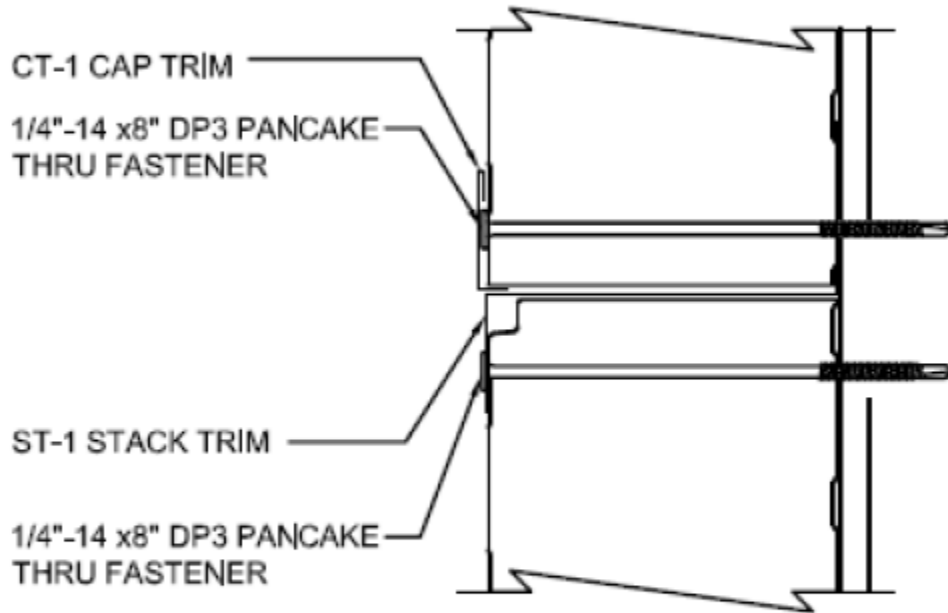








KS SERIES - HORIZONTAL INSTALLATION



6 HORIZONTAL STACK JOINT

(PLAN
VIEW)

