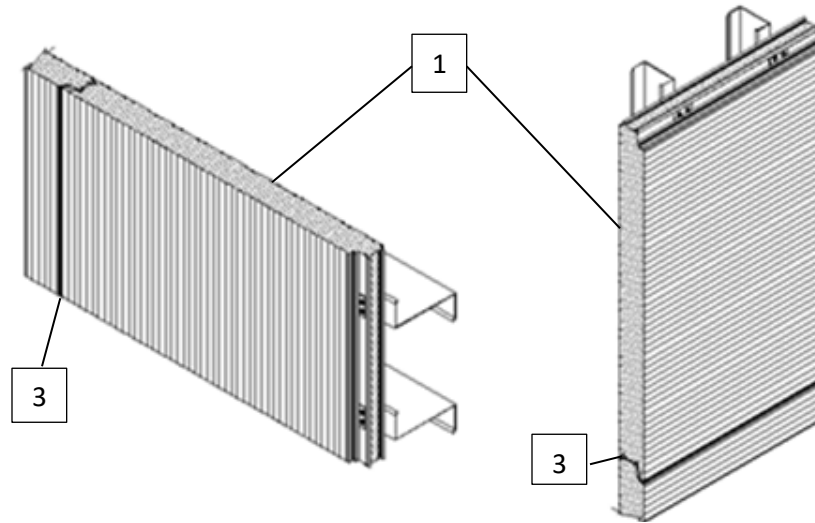


Kingspan Insulated Panels, Inc.
Design No. KIP/IMWP 10-01
Insulated Metal Wall Panels
KS SERIES AND OPTIMO
CAN/ULC-S101

Rating: 10 Minute Remain-In-Place per 2015 National Building Code of Canada Section 3.1.5.7 (2)



1. CERTIFIED MANUFACTURER: Kingspan Insulated Panels, Inc.

CERTIFIED PRODUCT: Insulated Metal Wall Panels

CERTIFIED MODEL: KS SERIES AND OPTIMO: Horizontally or vertically oriented, min. 24 in. wide × min. 2 in. thick insulated metal panels, installed to the exterior side of steel framing. Panel facings are min. 26 GA exterior and min. 26 GA interior side, steel skins. The panel core is Quadcore or polyisocyanurate rigid foam.

2. FASTENERS: Attach panels to each steel framing member, spaced at 16 in. on center (oc), using

manufacturer's hidden fastener clips and two 1/4-14 or 1/4-20 HWH steel fasteners with #3 or #5 self-drilling points.

KS Series and Optimo panels 2 in. or 2-1/2 in. thickness require #8-18, 1/2 in. long Stitch Tek stitching screws applied to the exterior side panel joint at max. 12 in. spacing oc. Panels min. 3 in. thickness do not require stitching screws.

3. JOINTS AND SEAMS: The panel edge tongue and groove joint on the interior side can be sealed with Kingspan supplied liquid butyl sealant.

Consult the listing report on the Directory of Building Products (<https://bpdirectory.intertek.com>) for the edition of the standard(s) evaluated.