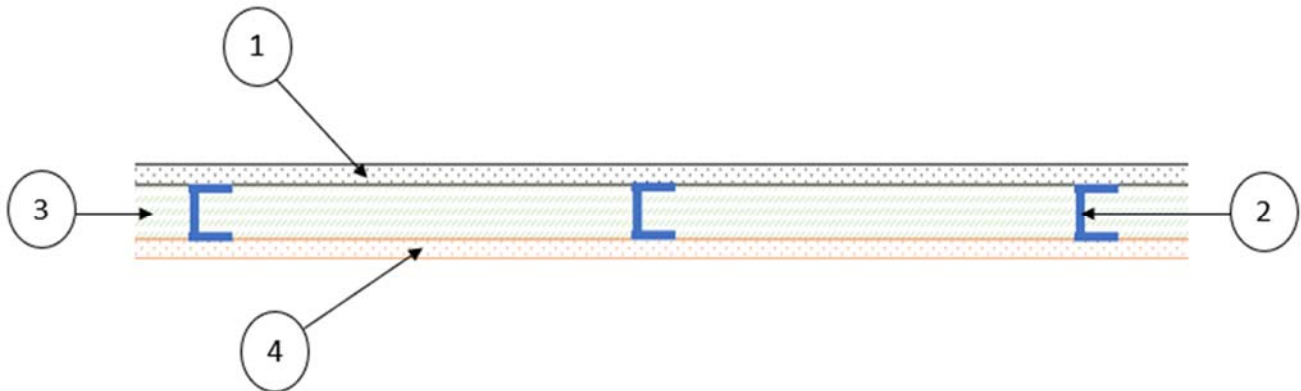


Creative Polymer Solutions LLC
Design No. CPS/FI 30-06
Spray Polyurethane Foam
Accufoam OC
NFPA 285
Meets Requirements



- 1. GYPSUM BOARD:** Install min. 5/8 in. nominal thickness Type X gypsum board oriented with long dimension perpendicular to vertical framing (Item 2) and offset vertical joints. Attach to framing (Item 2) using # 6 x 1-1/4 in. long bugle-head screws spaced vertically 12 in. on center (oc) and 3/8 in. to 5/8 in. from edges of boards.
- 2. FRAMING:** Install max. 6 in. deep and min. 3-5/8 in. deep, 20 GA galvanized steel studs and track with studs spaced max. 24 in. oc. Secure steel studs horizontally to top and bottom tracks using #2- 8 x 1/2 in. self-drill zinc plated screws. In the stud cavity at the floor line, apply a min. 4 in. thick, 4 pcf mineral wool as fire stopping material.
- 3. CERTIFIED MANUFACTURER:** Creative Polymer Solutions LLC

CERTIFIED PRODUCT: Spray Polyurethane Foam

CERTIFIED MODEL: Accufoam OC

Spray-apply the insulation to partially fill or to fully fill the steel stud cavity.

- 4. EXTERIOR SHEATHING:** Install ASTM C1177 compliant, min. 5/8 in. nominal thickness, Type X Glass Mat Gypsum Sheathing oriented with long dimension perpendicular to vertical framing (Item 2) and offset vertical joints. Attach to framing (Item 2) using #6 x 1-1/4 in. long bugle-head screws spaced vertically 12 in. oc and 3/8 in. to 5/8 in. from edges of boards.
- 5. WINDOW FLASHING (Not Shown):** Install min. 25 GA steel sheet flush to the exterior face of the wall and with a 2 in. vertical return lip along the interior perimeter window opening to close the window header, jambs, and sill.
- 6. EXTERIOR CLADDING (Optional, Not Shown):** Apply any of the following non-combustible claddings to the exterior:

- A. Brick and Brick Ties/Anchors** – Install nominal 4 in. thick clay brick or veneer with max. 2 in. air gap with brick ties/anchors spaced max. 16 in. oc vertically and max. 24 in. oc horizontally (aligned with framing (Item 2)).
- B. Stucco** – Install min. $\frac{3}{4}$ in. thick exterior cement plaster and lath.
- C. Natural Stone (Granite, Limestone, Marble, Sandstone)** – Install min. 2 in. thick natural stone using an approved installation technique with a max. 2 in. air gap.
- D. Artificial Cast Stone** – Install min. 1-1/2 in. thick artificial cast stone using an approved installation technique with a max. 2 in. air gap.
- E. Terra Cotta** – Install min. 1-1/4 in. thick terra cotta cladding using an approved installation technique with a max. 2 in. air gap.
- F. Concrete** – Install min. 2 in. thick concrete with a max. 2 in. air gap.
- G. Glass Fiber-reinforced Concrete Panels** – Install min. 1/4 in. thick panels per manufacturer's instructions.
- H. CMU Blocks** – Install min. 4 in. thick blocks with max. 2 in. air gap.

- I. Sheet Metal** – Install sheet metal cladding including steel, aluminum, copper, or zinc.

- 7. WATER-RESISTANT BARRIER (WRB, Not Shown):** Install a WRB under ASTM E 136 compliant, non-combustible, min. 2 in. thick, min. 4 pcf mineral wool with any of the approved exterior claddings (Item 6). Alternatively, install a WRB and that complies with the following performance and installation requirements:

- **ASTM E1354 Performance:**
Peak heat release rate less than 150 kW/m², and effective heat of combustion less than 18 MJ/kg when tested in the horizontal orientation at an incident radiant heat flux of 50 kW/m²,
- **ASTM E84 or UL 723 Performance:**
Flame Spread Index not to exceed 25, and Smoke Developed Index not to exceed 450,
- When used in combination with stucco (Item 6B), use min. 7/8 in. thick exterior cement plaster and lath.
- When used in combination with sheet metal (Item 6I), use min. 0.0149 in. thick steel only.

Consult the listing report on the Directory of Building Products (<https://bpdirectory.intertek.com>) for the edition of the standard(s) evaluated.