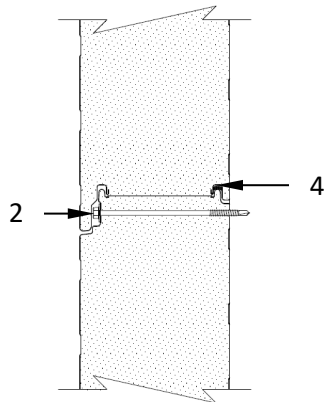
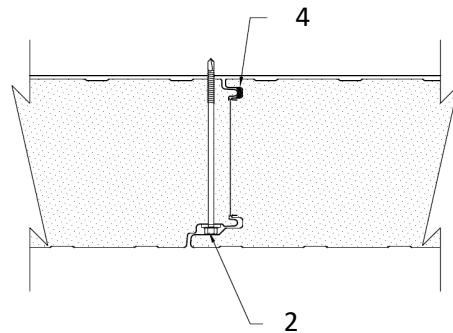


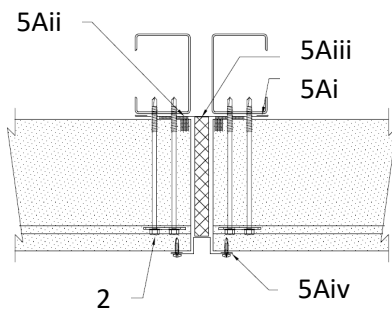
**Kingspan Insulated Panels, Inc.**  
**Design No. KIP/IMWP 30-04**  
**Insulated Metal Wall Panels**  
**OPTIMO Panels**  
**NFPA 285**  
**Rating: Meets Conditions of Acceptance**



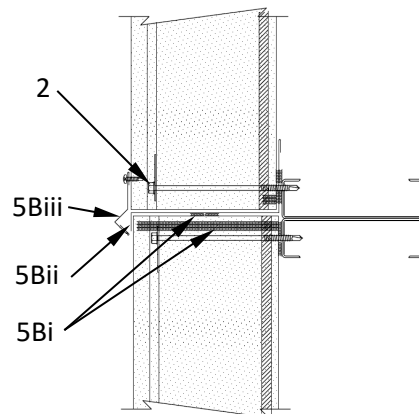
**Standard Panel Joint  
(Horizontal)**



**Standard Panel Joint  
(Vertical)**



**Butt Joint  
(Horizontal)**



**Stack Joint  
(Vertical)**



1. **CERTIFIED MANUFACTURER:** Kingspan Insulated Panels, Inc.

**CERTIFIED PRODUCT:** Insulated Metal Wall Panels

**CERTIFIED MODEL:** OPTIMO Panels

- A. **PANELS** – Horizontally or vertically oriented, 24 in. to 42 in. wide × 2 in. to 6 in. thick insulated metal panels installed to the exterior side of steel framing. Panel facings are minimum 26 GA exterior and minimum 26 GA interior side, having ASTM A653 Grade 33 G90 zinc or ASTM A792 Grade 33 AZ50 (or greater) zinc/aluminum alloy coated steel. The panel core is polyisocyanurate rigid foam or Kingspan's alternate Quadcore.
2. **FASTENERS:** For horizontal orientation, attach panels to each vertical steel framing member spaced max. 42-1/2 in. on center (oc). For vertical installation, attach panels to each horizontal steel girt spaced max. 104 in. oc. Use manufacturer's hidden fastener clips and two 1/4-14 HWH Tek 3 zinc coated self-drilling screws.
3. **GYPSUM BOARD:** (Optional/Not Shown) Install minimum 1/2 in. thick gypsum board to the interior side of the steel framing using 1-1/4 in. wafer-head corrosion resistant screws, spaced at 8 in. oc around the perimeter and 12 in. oc within the gypsum board field.
4. **SEALANT:** 1/4 in. bead of non-skinning butyl sealant on the interior and exterior tongue and groove interlock. The sealant on the exterior interlock is optional.
5. **BUTT AND STACK JOINTS:** Construct butt and stack joints as follows:
- A. **BUTT JOINT** – When panels are installed horizontally and vertical joints are required, install the following:
- i. **MENDING PLATE:** Install 6 in. × 26 GA steel mending plates over the studs.
  - ii. **BUTYL SEALANT:** Apply two beads of butyl sealant over each steel mending plate. Set the panels into the butyl sealant before fixing the panels to the steel framing. Apply butyl sealant marriage bead to interior joint of the panels.
  - iii. **MINERAL FIBER STRIP:** Install 4 in. × 1-1/4 in., min. 4 pcf Hilti CP 767 speed strips in the vertical butt joint.
  - iv. **REVEAL TRIM:** Attach 26 GA × min. 2-3/4 in. wide reveal trim to the panels over the joint using #10 × 3/4 in. long metal-to-metal stitching screws spaced 12 in. oc or pop rivets spaced 8 in. oc.
- B. **STACK JOINT** – When panels are installed vertically and horizontal joints are required, install the following:
- i. **BUTYL SEALANT:** Apply butyl sealant under the lower stack joint trim and to the lower panel framing. Apply a butyl sealant marriage bead to the exterior panel face.
  - ii. **LOWER STACK TRIM:** Install the Z-shaped 26 GA lower stack trim over the lower panel with one leg of the trim covering the exterior face of the lower panel and the other leg covering the interior face of the upper panel. Secure the lower stack trim to the upper panel using the panel fasteners (Item 2).
  - iii. **UPPER STACK TRIM:** Fix the 26 GA upper stack trim to the exterior side of the upper panel using #10 × 3/4 in. long metal-to-metal stitching screws spaced 12 in. oc or pop rivets spaced 12 in. oc.



6. **FLASHING:** (Not Shown) The inside perimeter of openings in the wall assembly (cutouts) shall be continuously enclosed with 26 GA flashing, covering 2 in. over the front of the panel and the panel cut.
7. **FLOORLINE FIRESTOPPING:** (Not Shown) Minimum 4 pcf mineral wool in each stud cavity and at each floorline – attached with Z-clips or equivalent.

Consult the listing report on the Directory of Building Products (<https://bpdirectory.intertek.com>) for the edition of the standard(s) evaluated.

*Compliance of the assembly described in this Design Listing with the referenced standard relies on verification that the assembly constructed in the field is consistent with that described herein. Intertek certified products may be verified by the approved Intertek label; other products must be verified by the Authority Having Jurisdiction as meeting the specifications stated herein.*