

Nichiha USA Inc.
Design No. NUI/FRCP 30-01
Exterior Cladding
Nichiha™ Architectural Wall Panels (AWP)
NFPA 285
Rating: Meets Conditions of Acceptance

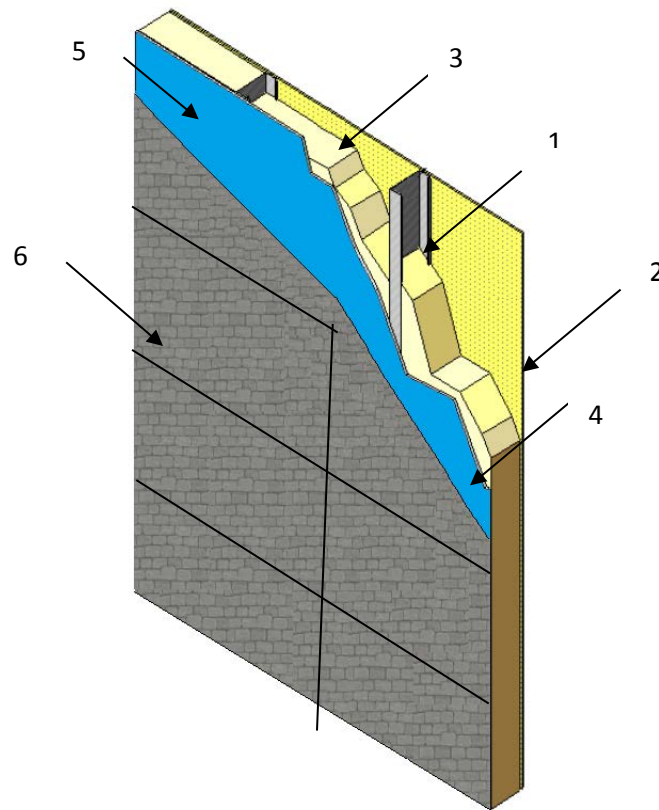


Figure 1 – Wall Assembly



Figure 2 – Starter Track Profile

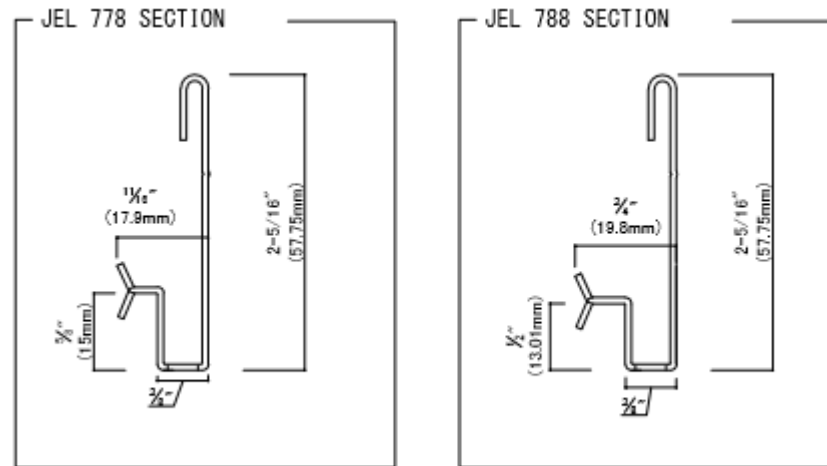


Figure 3 – Clip Profiles

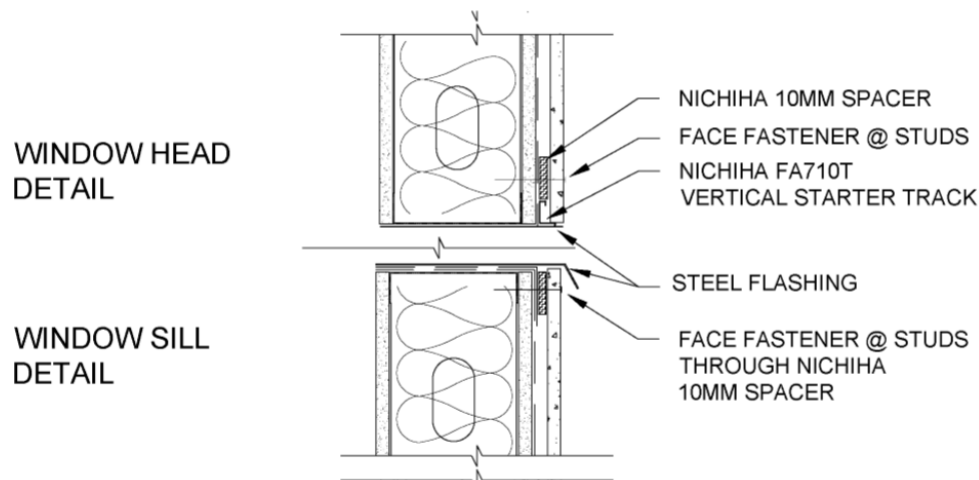


Figure 4 – Joint Attachment Profile

1. **STEEL STUDS:** Min. 3-5/8 in., 18 GA galvanized C-channel steel studs spaced at 16 in. on center (oc). Secure steel studs to top and bottom tracks (not shown).
2. **INTERIOR GYPSUM BOARD:** Attach one layer of 5/8 in. thick Type X gypsum board to the steel studs (Item 1) using No. 6, 1-5/8 in. long

Type S drywall screws, spaced 16 in. oc around the perimeter and 24 in. oc in the field.

- A. **JOINT TAPE AND COMPOUND** – (Not Shown) Apply ASTM C475 compliant joint compound and joint tape to the gypsum joints, and joint compound to the fastener heads.



3. **INSULATION:** (Optional) Place 4 in. thick, 4 pcf, mineral wool insulation sheets within the stud cavities. Use Z-clips to secure insulation in place.
4. **EXTERIOR SHEATHING:** Attach one layer of 1/2 in. thick Densglass Gold Sheathing to the exterior side of steel studs (Item 1) using No. 6, 1-5/8 in. long Type S drywall screws, spaced 16 in. oc around the perimeter and 24 in. oc in the field.
5. **WATER-RESISTIVE BARRIER:** Apply one layer of Dupont™ Tyvek® CommercialWrap® weather barrier to the exterior sheathing (Item 4).
6. **CERTIFIED MANUFACTURER:** Nichiha USA Inc.

CERTIFIED PRODUCT: Exterior Cladding

CERTIFIED MODEL: Nichiha™ Architectural Wall Panels (AWP)

Fasten Nichiha's Starter Track (FA700) (Figure 2) to the stud framing along the bottom edge of the wall using #8 wafer- or pan-head, 1-5/8 in. full-thread screws at 16 in. oc spacing. Place the Nichiha™ Architectural Wall Panels

(AWP) onto the starter track in a row starting from left to right. The top of each panel must be secured along the top edge using Nichiha's Ultimate Clip (JEL 778 for 5/8 in. thick Nichiha panels; JEL 788 for 3/4 in. and 7/8 in. thick Nichiha panels)(Figure 3). The clip is fastened to the studs (Item 1) using #8 wafer- or pan-head, 1-5/8 in. full-thread screws at 16 in. oc spacing.

After the first row is installed, the next row up will fit into a groove in the panel clip and form a shiplap joint with the panel below it.

Continuous vertical joints are permitted but may not be placed above openings. All vertical joints must be over a Double Flange Sealant Backer (FH1015) and must be sealed with Loctite® PL Polyurethane Sealant if not shiplapped.

7. **OPENINGS:** (Not Shown) Openings must be protected with 22 GA steel flashing.
8. **FLOORLINE FIRESTOPPING:** (Not Shown) Install 4 in. thick, 4 pcf, mineral wool in the stud cavity at the floorlines. Install the insulation in multiple layers to obtain a thickness of 8 in.