

Nichiha USA Inc.
Design No. NUI/FRCP 30-02
Exterior Cladding
Nichiha Architectural Wall Panels (AWP)
NFPA 285
Rating: Meets Conditions of Acceptance

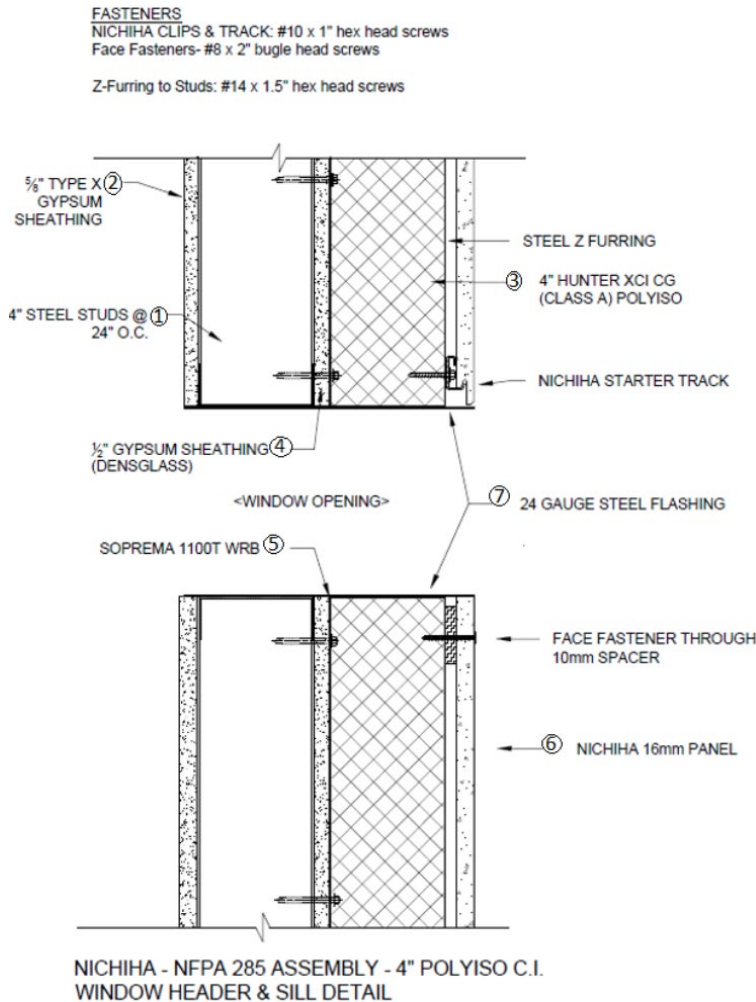


Figure 1 - Wall Assembly

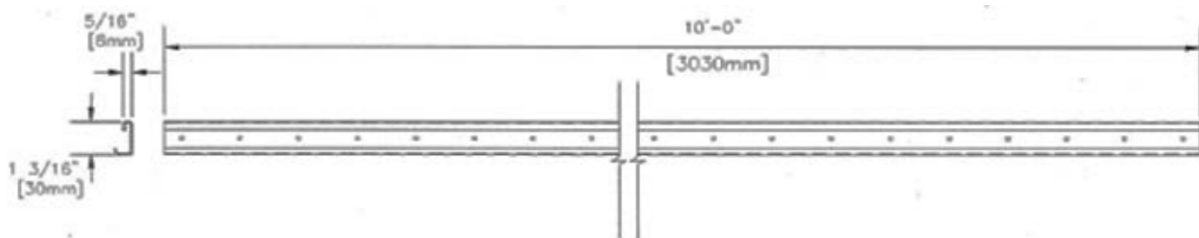


Figure 2 - Starter Track Profile

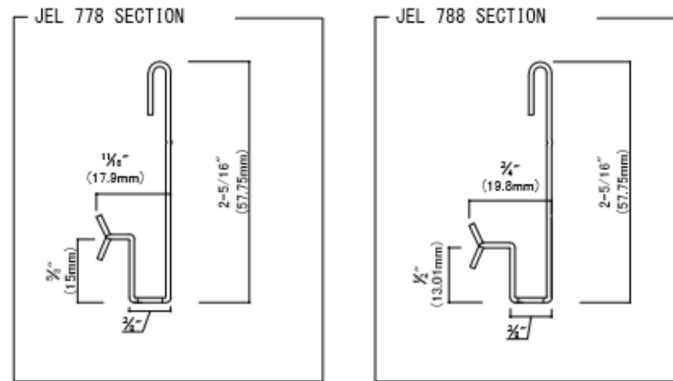


Figure 3 - Clip Profile

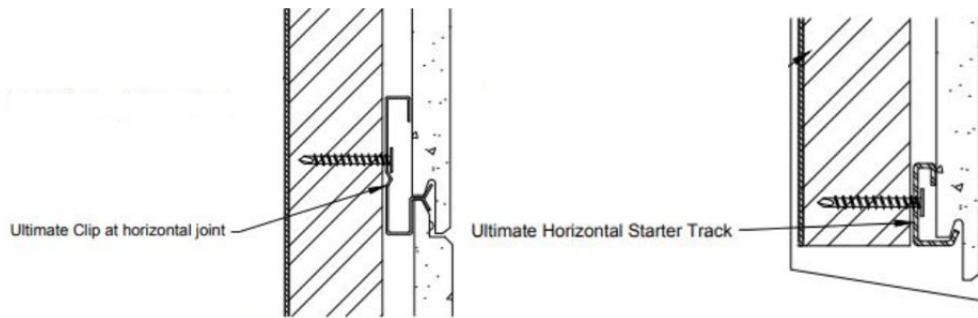


Figure 4 – Ultimate Clip (Left) and Starter Track (Right) Attachment

1. **STEEL STUDS:** Min. 3-5/8 in., 20 GA galvanized C-channel steel studs spaced at 24 in. on center (oc). Secure steel studs to top and bottom track (not shown).
 2. **INTERIOR GYPSUM BOARD:** Attach one layer of 5/8 in. thick Type X gypsum board to the steel studs (Item 1) using #6, 1-1/4 in. self-drilling, zinc-plated, bugle-head screws, spaced 8 in. oc around the parameter and 12 in. oc in the field.
 3. **INSULATION:** Fit 4 in. thick Hunter Panels Xci Coating Glass polyisocyanurate insulation once exterior sheathing (Item 4) and water-resistive barrier (Item 5) have been installed. Use 2 in. x 4 in. x 2 in. 18 GA z-girts, oriented vertically, fastened with #14 hex-head 1-1/2 in. self-drilling screws to secure insulation in place.
 4. **EXTERIOR SHEATHING:** Attach one layer of 1/2 in. thick Densglass® Gold Sheathing to the exterior side of steel stud (Item 1) using #6 1-1/4 in. self-drilling, zinc-plated screws, spaced 8 in. at the joints and around the perimeter and 12 in. in the field.
 5. **WATER-RESISTIVE BARRIER:** Apply one layer of self-adhering Soprema SOPASEAL® STICK 1100T to the exterior sheathing (Item 4).
 6. **CERTIFIED MANUFACTURER:** Nichiha USA Inc.
- CERTIFIED PRODUCT:** Exterior Cladding
- CERTIFIED MODEL:** Nichiha Architectural Wall Panels (AWP)



Fasten Nichiha's Starter Track (Figure 2) to the z-girts at the bottom edge of the wall and at the window header using #10 hex-head 1 in. screws. Place the Nichiha Architectural Wall Panels (AWP) on to the starter track. The top of each panel must be secured along the top edge using Nichiha's Ultimate Clip (JEL 788 for Sandstone and VintageBrick only, JEL 778 for all others) (Figure 3). The clip is fastened to the z-girts using #10 hex-head 1 in. screws along the horizontal joints of the panels spaced 18 in. vertically, creating a 10mm air cavity.

After the first row is installed, the next row up will fit into a groove in the panel clip and form a shiplap joint with the panel below (Figure 4). H-mold trims are used for the vertical joints.

7. **OPENINGS:** Openings must be protected with 24 GA steel flashing.
8. **FLOORLINE FIRESTOPPING:** (Not Shown) Install one layer of 4 in. thick, 4 pcf, mineral wool in the stud cavity at the floorlines.