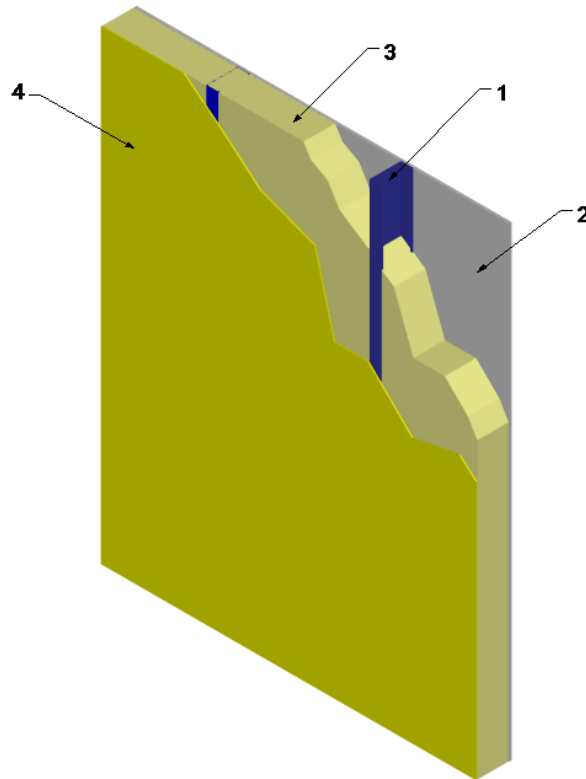


---

Gaco, a division of Holcim Solutions and Products US, LLC  
Design No. GWL/FI 30-04  
Non-Loadbearing Wall System  
GacoOnePass Low GWP F1880 and F1880W Spray-applied Polyurethane Insulation  
NPFA 285  
Rating: Meets Conditions of Acceptance

---



- 1. WALL FRAMING:** Install 3-5/8 in. deep, 20 GA galvanized steel studs spaced max. 24 in. on center (oc). Secure steel studs to 3-5/8 in. 20 GA top and bottom track (not shown) using #8, 7/16 in. long, self-tapping pan-head framing screws.

OPTIONAL: Install nominal 2 x 4 fire-retardant treated wood studs, complying with the definition and requirements prescribed in the International Building Code. Studs shall be spaced max. 16 in. oc.

- 2. GYPSUM BOARD:** Install 5/8 in. thick Type X gypsum board with long dimension perpendicular to studs. Attach to steel studs using #6, Type S, 1-1/4 in. long, self-tapping bugle-head screws. Attach to wood studs using #6, 1-5/8 in. long, coarse thread, bugle-head screws or use #13, 1-5/8 in. drywall nails.

Fasteners for fire-retardant-treated wood studs shall be of hot-dipped zinc-coated galvanized steel, stainless steel, silicon bronze, or copper.

Space fasteners 8 in. oc around perimeter and 12 in. oc in the field.



- A. **JOINT TAPE AND COMPOUND – (Not Shown)**  
Apply a level 2 finish of vinyl or casein, dry or premixed, joint compound applied to the following elements: Apply to face layer of gypsum board in two coats to all exposed fastener heads and gypsum board joints. Embed min. 2 in. wide paper, plastic, or fiberglass tape in first layer of compound over joints in gypsum board.

**3. INSULATION:**

**CERTIFIED PRODUCT:** GacoOnePass Low GWP F1880 or F1880W Spray Polyurethane Foam Insulation

Spray-apply a nominal 3-5/8 in. thick layer of GacoOnePass Low GWP F1880 or F1880W, at its nominal density of 2.2 pcf, to completely fill the steel stud cavity.

- 4. EXTERIOR SHEATHING:** Install 1/2 in. thick, GP DensGlass® Gold Exterior Sheathing to the exterior side of studs. Install sheathing with long dimension perpendicular to studs. Attach to steel studs using #6, Type S, 1-1/4 in. long self-tapping bugle-head screws. Attach to wood studs using #6, 1-5/8 in. long, coarse thread, bugle-head screws or use #13, 1-5/8 in. drywall nails.

Fasteners for fire-retardant treated wood studs shall be of hot-dipped zinc-coated galvanized steel, stainless steel, silicon bronze, or copper.

Space fasteners 8 in. oc around perimeter and 12 in. oc in the field.

- 5. OPENINGS (Not Shown):** Openings must be protected with 20 GA steel framing.

- 6. FLOORLINE STOPPING (Not Shown):** Install 4 in. thick, 4.0 pcf mineral wool in the stud cavity at the floorlines.

Consult the listing report on the Directory of Building Products (<https://bpdirectory.intertek.com>) for the edition of the standard(s) evaluated.

*Compliance of the assembly described in this Design Listing with the referenced standard relies on verification that the assembly constructed in the field is consistent with that described herein. Intertek certified products may be verified by the approved Intertek label; other products must be verified by the Authority Having Jurisdiction as meeting the specifications stated herein.*